



URZĄD PATENTOWY RZECZYPOSPOLITEJ POLSKIEJ

OFFICE DES BREVETS DE LA
REPUBLIQUE POLONAISE

PATENT OFFICE OF
THE REPUBLIC OF POLAND

DAS PATENTAMT DER
REPUBLIK POLEN

Acknowledgement of receipt

We hereby acknowledge receipt of your request for the processing of an international application according to the Patent Cooperation Treaty as follows:

Submission number	1600000844	
PCT application number	PCT/PL2010/050059	
Date of receipt	24 November 2010	
Receiving Office	PATENT OFFICE OF THE REPUBLIC OF POLAND	
Your reference	PZ/1045/AR	
Applicant	MAZUR, Wojciech	
Number of applicants	1	
Country	PL	
Title	Cigarette box with a flap hinged independently from the upper hinged lid	
Documents submitted	eolf-pkda.xml eolf-appb.xml eolf-vlog.xml eolf-appb-P000001.pdf (12 p.) eolf-appb-P000003.pdf (1 p.) eolf-appb-P000004.pdf (40 p.) pct101u.gml	eolf-requ.xml eolf-fees.xml pct101.GML eolf-appb-P000002.pdf (8 p.) eolf-abst.txt pct101.1WO referenc.inf
Submitted by	C=PL,serialNumber=PESEL:72101703377,SN=Witek,givenName=Rafał,CN=Rafał Witek	
Method of submission	Online	
Date and time receipt generated	24 November 2010, 17:55:19 (CET)	

/PATENT OFFICE OF THE REPUBLIC OF POLAND/



Cigarette box with a flap hinged independently from the upper hinged lid

The present invention relates to a cigarette box with a flap hinged independently from the upper hinged lid, its blanks and their configuration system.

The U.S. Patent No. 3,011,630 discloses the cigarette box combined with matches, wherein the matches are exposed when the box is opened, and are protected by an overlaying cover or flap when the box is closed. In one embodiment of the invention the upper part of the box and its rear part, a bottom wall and side walls, as well as the cover protecting the matches, are formed as an individual cut-out or blank. The second blank includes an inner front wall lamina and an inner side wall lamina. The third blank includes an outer front wall lamina and intermediate side wall lamina. The outer front wall lamina holds the pack of matches, in such a way, that it forms a typical unit of matches attached to the outer surface. The second and third blanks are joined together, and the second blank protrudes over the upper edge of the third blank. These joined blanks form an insert, which closes the open front part of the main blank. The match unit is attached to the outer front wall and is covered by the cover for the matches.

From the polish patent application P 355833 is known the cigarette box and its blank. The box has a shape of rectangular prism and has the hinged lid. Said box includes a storage part intended to store the cigarettes and the hinged lid joined to the storage part by means of an articulated joint placed on the rear wall, wherein the front wall of the lid is longer than its rear wall, and the side walls of the lid are oblique. The box is characterized in that, the storage part is equipped with an additional inner front wall and the outer front wall of the storage part is hinged, whereas between the hinged front wall and the inner front wall there is an additional storage space. Matches are placed in the storage space. The hinged outer front wall has also a fixing substance along its edges. The edge of the hinged outer front wall is placed under the edge of the box lid. The edges of the inner side walls are attached to the inner front wall. The edges of the inner side walls and corner walls are attached to the inner front wall. The matches are attached to the hinged front wall. The matches are attached to the inner front wall.

From the polish patent application P 370152 is known the cigarette box with the hinged lid, which has the shape of the rectangular prism and includes the storage part intended to store the cigarettes. The hinged lid is joined to the storage part by means of the articulated joint placed on the rear wall, whereas the front wall of the lid is longer than its rear wall, and the side walls of

the lid are oblique. Said storage part is equipped with an additional inner front wall and the outer front wall of the storage part is hinged, wherein between the hinged front wall and the inner front wall is formed an additional storage space, preferably for matches, a lighter or other objects. The end of the outer front wall is tapered and bended towards the interior of the box. The box is characterized in that, the inner front wall has two overpresses, placed one above the other, directed to the inside of the box, of which the lower overpress of the inner front wall forms the storage part, and the front wall is made of the same material as the box is made, or the front wall is made of transparent or semi-transparent material or it has the overpress (17) directed outwards and forming an additional storage space.

In the state of the art there is no box with an additional separate storage space that is opened independently from the upper hinged lid, which contains such objects like matches or lighter, that is uncomfortable in its use, risks in falling out or getting wet of the cigarettes during drawing out the object from the additional storage space. The aim of the invention is thus to obtain the cigarette box with the additional separate storage space that is opened independently from the upper hinged lid, which is arranged either on the front or the back of the box.

The new box and its variants give the user free access to the separate storage space and allow using its contents and/or information, e.g. health information, before opening the main upper lid to storage space with the cigarettes.

The present invention refers to the cigarette box and its variants, which includes the hinged lid – the upper cover, an outer flange resulting from the inner front wall, has the shape based on the rectangular prism and contains the storage part intended to store the cigarettes and the additional storage part arranged either on the front or the back of the box.

The cigarettes box includes the hinged lid joined to the storage part by means of an articulated joint placed on the rear wall, wherein the front wall of the lid is longer than its rear wall, whereas the side walls of the lid are oblique. Said storage part is provided with the additional inner blank with joined front wall forming the outer flange of the box and the outer front wall/the front lower flap of the storage part is hinged independently from the upper hinged lid, whereas between the independently hinged front wall/the front lower flap and the inner front wall there is the additional storage space advantageous to place an overprint or the objects, or the box includes the additional storage space formed on the rear part of the box with the lower rear flap that is opened independently from the upper hinged lid. Said independently hinged lower rear flap results from the inner front blank of the box with the additional lower front wall of the box, which is elongated and directed backwards. Thus, the inner front blank with the additional elongated lower front wall forms the outer flange of the box and/or results from the blank of the lower outer casing of the box lower wall, which is reversed and directed backwards and/or

results from the doubled in the middle part blank of the outer casing of the box lower part and directed backwards.

The box with the lower front or rear flap, that is opened independently from the upper hinged lid is characterized in that, the inner front blank and its lower elongated wall does not have and/or has one or more overpresses, which subsequently form a visible outer flange of the box without hinging the lower flap or after the lower flap is hinged, independently whether the lower flap is placed on the front or on the rear of the box, and in that, the inner front wall of the front inner blank of the box does not have and/or has the additional lower wall attached directly to the bottom wall.

The box with the lower rear flap that is opened independently from the upper lid is characterized in that, the outer casing of the box middle rear wall does not have and/or has one or more overpresses, which consequently together with the independently opened lower rear flap resulting directly from inner front blank or the outer casing of the box, form the additional storage space. Advantageously, in the separate storage part arranged on the front or rear of the box, the overprint or the objects can be placed, and the access to this part is independent from the upper lid.

The box is formed by the joint configuration of two parts:

the outer casing of the box and the inner front blank of the box.

The box is characterized by a simple design based on the rectangular prism and by including separate additional storage space opened independently from the upper hinged lid which has additional function as an overprint and information carrier.

The configuration of the joints of particular variants of the box outer casing and particular variants of the box inner blank form the box with the additional storage space arranged on the rear or front.

The configuration of the joints of particular variants of the box outer casing and variant of the inner front wall/inner wings of the box form the box with the additional storage space arranged on the rear.

The lower front flap independently hinged from the upper hinged lid, resulting from the inner front blank of the box or from the outer casing, is placed on the front part of the box and is single or double-layered.

The lower rear flap independently hinged from the upper hinged lid, resulting from the inner front blank of the box or from the outer casing, is placed on the rear part of the box and is single or double-layered.

The lower front flap independently hinged from the upper hinged lid, resulting from inner front blank of the box or from the outer casing, is placed on the front part of the box and does not have or has the overpresses directed outwards and also is single or double-layered.

The lower rear flap independently hinged from the upper hinged lid, resulting from inner front blank of the box or from the outer casing, is placed on the rear part of the box and does not have or has the overpresses directed outwards and also is single or double-layered.

The middle rear wall of the box outer casing does not have and/or has one or more overpresses.

The inner front middle wall of the inner front blank of the box does not have and/or has one or more overpresses.

The lower wall of the box outer casing - the rear lower flap resulting from the inner front blank of the box or from the outer casing does not have or has the outer side walls, which do not have or have the cut-outs, which do not have or have the overpresses, which do not have or have the element made of transparent or semi-transparent material, that is embossed or not.

The lower inner front wall of the box - the lower front flap resulting from the inner front blank of the box or from the outer casing, does not have or has the outer side walls, which do not have or have the overpresses, which do not have or have the cut-outs, which do not have or have the element made of transparent or semi-transparent material, that is embossed or not.

The lower front flap independently hinged from the upper hinged lid, resulting from the inner front blank of the box or from the outer casing, is placed on the front part of the box and does not have or has a cut-out opening, when it is both single and double-layered.

The lower rear flap independently hinged from the upper hinged lid, resulting from the inner front blank of the box or from the outer casing, is placed on the rear part of the box and does not have or has the cut-out opening, when it is both single and double-layered.

The lower front flap independently hinged from the upper hinged lid, resulting from the inner front blank of the box or from the outer casing, is placed on the front part of the box and does not have or has in the cut-out opening the element, which is made of transparent or semi-transparent material, when it is both single and double-layered.

The lower rear flap independently hinged from the upper hinged lid, resulting from the inner front blank of the box or from the outer casing, is placed on the rear part of the box and does not have or has in the cut-out opening the element, which is made of transparent or semi-transparent material, when it is both single and double-layered.

The lower front flap independently hinged from the upper hinged lid, resulting from the inner front blank of the box or from the outer casing, is placed on the front part of the box and

has sharp outer edges, when it is single-layered, and has smooth outer edges, when it is double-layered.

The lower flap independently hinged from the upper hinged lid, resulting from the inner front blank of the box or from the outer casing, is placed on the rear part of the box and has sharp outer edges, when it is single-layered, and has smooth outer edges, when it is double-layered.

The outer casing of the box directed towards the front, forms the lower front flap independently hinged from the upper hinged lid that is situated on the front part of the box.

The inner front blank forms the visible outer flange of the box and its lower front wall is additionally elongated and directed backwards and it forms the lower rear flap independently hinged from the upper hinged lid that is placed on the rear part of the box.

The lower part of the outer casing of the box that is directed backwards forms the lower rear flap independently hinged from the upper hinged lid, which is placed on the rear part of the box.

The outer casing of the box, which is doubled in its middle part by means of additional wall and joined to the outer casing additional lower wall, which is joined to the bottom of the wall and is directed towards the rear, forms the lower rear flap independently hinged from the upper hinged lid that is placed on the rear part of the box.

The present invention relates also to the blank and its variants to obtain the cigarette box with the front or rear flap independently hinged from the upper lid.

The blank of the outer casing (together with the blank of the inner front wall) to obtain the cigarette box with the front or rear flap independently hinged from the upper lid, that includes the main storage part for cigarettes and the hinged upper lid joined to the storage part by means of the articulated joint placed on the rear wall, wherein the front wall of the upper lid is longer than its rear wall, and the side walls of the lid are oblique, within longitudinally expanded blank of the box – outer casing comprises the lid walls: front, upper and lower together with the joined to them side walls, and there is situated the rear wall of the main storage space together with the joined to it outer side walls, the outer edges of which have equal or shorter length than the distance from the front edge of the bottom wall to the front lower edge of the front wall of the upper lid in the closed position of the box, and/or to which are attached the additional outer walls - outer wings; and the rear wall of the main storage part is joined with the bottom wall, whereas the bottom wall is joined with the lower wall of the blank and/or lower wall – the lower rear flap of the blank is joined with the additional outer side walls, and/or within longitudinally expanded blank of the box – outer casing are situated the lid walls: front, upper and lower together with the joined to them side walls, and there is situated the rear wall of the main storage part together with the parallel doubled rear wall together with the joined to it outer side wall, the

outer side edge of which is longer than the distance from the front edge of the bottom wall to the front lower edge of the front wall of the upper lid in the closed position of the box, and is the parallel projection of the opposite outer side wall of the main rear wall, whereas the parallel doubled rear wall of the main storage space is joined with the rear wall of the main storage space through one common wall.

Said doubled rear wall of the main storage space is joined with the bottom wall and the bottom wall is joined with the lower rear wall – the lower rear flap of the blank and/or the rear wall of the blank is joined with the additional outer side walls.

The inner front blank of the box (together with the blank of the outer casing) to obtain the cigarette box with the independently hinged flap according to the invention, that includes main storage space for cigarettes, within longitudinally expanded blank of the box comprises the inner front wall from which directly result the upper guiding wings that serve as a guides for the upper hinged lid. To the inner front wall directly abut the outer side walls and/or to which abut additional lower walls. To the inner front wall directly abut the bottom wall and to the bottom wall is attached or not the additional elongated lower wall – the lower flap and/or to which are joined outer side walls, the outer side edges of which are shorter than the distance from front edge of the bottom wall to the lower front edge of the front wall of the upper hinged lid in the closed position of the box, and the length of the additional elongated wall after its additional side walls are folded and/or without side walls, which is joined to the bottom wall, is equal or less than the distance from the rear edge of the bottom wall to the rear articulated joint of the upper hinged lid wall.

Moreover, the blank of the outer casing is characterized in that, said lower wall of the blank of the box casing after its additional side walls are folded and/or without side walls, which is joined to the bottom wall, the length (height) of which is equal or shorter than the distance between the front edge of the bottom wall and the lower front edge of the front wall of the upper hinged lid in the closed position of the box, for the box variant with the independently hinged front lower flap, and/or the length (height) of which is less than the distance from the rear edge of the bottom wall to the rear articulated joint of the upper hinged lid wall, for the box variant with the independently hinged rear lower flap situated at the back.

The lower wall of the blank of the box outer casing includes side walls, the total area of which is equal or less than the area of the lower wall of the outer casing blank without those additional outer walls.

The outer edges of the lower wall of the box outer casing blank are longer than the parallel outer edges of its outer side walls.

The lower wall of the box outer casing blank does not have or has the cut-out opening and/or in which is situated the element made of transparent or semi-transparent material.

The lower wall of the box outer casing blank does not have or has the overpress.

The lower wall of the box outer casing blank does not have or has the element made of transparent or semi-transparent material, and/or which can be embossed.

The lower wall of the box outer casing blank does not have or has the outer side walls, which have the overpresses and/or do not have the overpresses and/or have the cut-outs and/or do not have the cut-outs or have the element made of transparent or semi-transparent material, and/or which can be embossed.

The rear wall of the main storage part of the box outer casing blank does not have or has one or more overpresses directed inwards the box.

In turn, the front inner blank of the box to form (together with the blank of the outer casing) the cigarette box with independently hinged flap according to the invention, that includes main storage space for cigarettes, within longitudinally expanded blank of the box comprises the inner front wall from which directly result the upper guiding wings that serve as the guides for the upper hinged lid. To the inner front wall directly abut the outer side walls and/or to which abut additional lower walls. To the inner front wall directly abut the bottom wall and to the bottom wall is attached or nor the additional elongated lower wall - the lower flap and/or to which are joined outer side walls, the outer side edges of which are shorter than the distance from the front edge of the bottom wall to lower front edge of the front wall of the upper hinged lid in the closed position of the box, and the length of the additional elongated wall after its additional side walls are folded and/or without side walls, which is joined to the bottom wall, is equal or less than the distance from the rear edge of the bottom wall to the articulated joint of the upper hinged lid wall.

The additional elongated lower wall - the lower front or rear flap of the blank of the inner front wall of the box comprises side walls, the total area of which is equal or less than its area.

The outer edges of the additional lower elongated wall - the lower front or rear flap of the blank of the inner front wall of the box are longer than the parallel outer edges of the blank of the inner front wall.

The additional elongated lower wall - the lower front or rear flap of the blank of the inner front wall of the box does not have or has the cut-out opening and/or in which is placed the element made of transparent or semi-transparent material.

The additional elongated lower wall - the lower front or rear flap of the blank of the inner front wall of the box does not have or has one or more overpresses.

The additional elongated lower wall - the lower front or rear flap of the blank of the inner front wall of the box does not have or has the element made of transparent or semi-transparent material and/or which can be embossed.

The additional elongated lower wall - the lower front or rear flap of the blank of the inner front wall of the box does not have or has the outer side walls, which have or not the overpresses, which have or not the cut-out and/or have or not the element made of transparent or semi-transparent, which is embossed or not.

The blank of the inner front wall, its main front wall and/or its side walls does not have or has one or more overpresses directed inwards the box.

The cigarette box according to the present invention is more precisely explained in the accompanying drawings and examples.

The figures for the box variants with the independently hinged lower front flap resulting from the outer casing of the box directed towards the front:

Fig.1,4 - Fig.1,7 and Fig.1,11 - Fig.1,14 and Fig.1,20 - Fig.1,23 and Fig.1,27 - Fig.1,31 and Fig.1,37 - Fig.1,40 and Fig.1,44 - Fig.1,47 and Fig.1,53 - Fig.1,56 and Fig.1,60 - Fig.1,64 show the box in the axonometric projection with the independently opened or closed lower front flap resulting from the outer casing of the box and with opened or closed upper hinged lid.

Fig.1,2; Fig.1,3; Fig.1,18; Fig.1,19; Fig.1,35; Fig.1,36; Fig.1,51; Fig.1,52 show the inner front blank in different variants and in unfolded or folded position.

Fig.1,8; Fig.1,9; Fig.1,15; Fig.1,16; Fig.1,24; Fig.1,25; Fig.1,32; Fig.1,33; Fig.1,41; Fig.1,42; Fig.1,48; Fig.1,49; Fig.1,57; Fig.1,58; Fig.1,65; Fig.1,66 show the unfolded blank of the outer casing in different variants, from which results the lower front flap.

Fig.1,1; Fig.1,10; Fig.1,17; Fig.1,26; Fig.1,34; Fig.1,43; Fig.1,50; Fig.1,59 show the side views of the box in different variants with the independently hinged lower front flap.

The figures for the box variants with the independently hinged lower rear flap which results from the inner front blank of the box and directed backwards.

Fig.2,6 - Fig.2,8 and Fig.2,13 - Fig.2,15 and Fig.2,21 - Fig.2,23 and Fig.2,28 - Fig.2,30 and Fig.2,36 - Fig.2,38 and Fig.2,43 - Fig.2,45 and Fig.2,51 - Fig.2,53 and Fig.2,58 - Fig.2,60 and Fig.2,66 - Fig.2,68 and Fig.2,73 - Fig.2,75 and Fig.2,81 - Fig.2,83 and Fig.2,88 - Fig.2,90 and Fig.2,95 - Fig.2,97 and Fig.2,103 - Fig.2,105 and Fig.2,111 - Fig.2,113 and Fig.2,118 - Fig.2,120 show the box in the axonometric projection with the independently opened or closed lower rear flap, which results from the inner front blank of the box and with the opened or closed upper hinged lid.

Fig.2,3; Fig.2,4 and Fig.2,11; Fig.2,12 and Fig.2,18; Fig.2,19 and Fig.2,26; Fig.2,27 and Fig.2,33; Fig.2,34 and Fig.2,41; Fig.2,42 and Fig.2,48; Fig.2,49 and Fig.2,56; Fig.2,57 and Fig.2,63; Fig.2,64 and Fig.2,71; Fig.2,72 and Fig.2,78; Fig.2,79 and Fig.2,86; Fig.2,87 and Fig.2,93; Fig.2,94 and Fig.2,100; Fig.2,101 and Fig.2,108; Fig.2,109 and Fig.2,116; Fig.2,117 show the inner front blank in different variants and in unfolded or folded position, from which results the lower rear flap.

Fig.2,5; Fig.2,20; Fig.2,35; Fig.2,50 and Fig.2,65; Fig.2,80; Fig.2,102; Fig.2,110 show the unfolded blank of the shortened outer casing in different variants.

Fig.2,1; Fig.2,2 and Fig.2,9; Fig.2,10 and Fig.2,16; Fig.2,17 and Fig.2,24; Fig.2,25 and Fig.2,31; Fig.2,32 and Fig.2,39; Fig.2,40 and Fig.2,46; Fig.2,47 and Fig.2,54; Fig.2,55 and Fig.2,61; Fig.2,62 and Fig.2,69; Fig.2,70 and Fig.2,76; Fig.2,77 and Fig.2,84; Fig.2,85 and Fig.2,91; Fig.2,92 and Fig.2,98; Fig.2,99 and Fig.2,106; Fig.2,107 and Fig.2,114; Fig.2,115 show the side views of the box in different variants with the independently hinged lower rear flap.

The figures for the box variants with the independently hinged lower rear flap, which results from the outer casing of the box and directed backwards:

Fig.3,5 - Fig.3,9 and Fig.3,16 - Fig.3,20 and Fig.3,27 - Fig.3,31 and Fig.3,38 - Fig.3,42 and Fig.3,49 - Fig.3,53 and Fig.3,60 - Fig.3,64 and Fig.3,71 - Fig.3,75 and Fig.3,82 - Fig.3,86 show the box in the axonometric projection with the independently opened or closed lower rear flap, which results from the outer casing of the box and with opened or closed upper hinged lid.

Fig.3,3; Fig.3,4 and Fig.3,14; Fig.3,15 and Fig.3,25; Fig.3,26 and Fig.3,36; Fig.3,37 and Fig.3,47; Fig.3,48 and Fig.3,58; Fig.3,59 and Fig.3,69; Fig.3,70 and Fig.3,80; Fig.3,81 show the inner front blank in different variants and in unfolded or folded position.

Fig.3,10; Fig.3,11 and Fig.3,21; Fig.3,22 and Fig.3,32; Fig.3,33 and Fig.3,43; Fig.3,44 and Fig.3,54; Fig.3,55 and Fig.3,65; Fig.3,66 and Fig.3,76; Fig.3,77 and Fig.3,87 and Fig.3,88 show the unfolded blank of the outer casing in different variants, from which results the independently hinged lower rear flap.

Fig.3,1; Fig.3,2 and Fig.3,12; Fig.3,13 and Fig.3,23; Fig.3,24 and Fig.3,34; Fig.3,35 and Fig.3,45; Fig.3,46 and Fig.3,56; Fig.3,57 and Fig.3,67; Fig.3,68 and Fig.3,78; Fig.3,79 show the side views of the box in different variants with the independently hinged lower rear flap.

The figures for the box variants with the independently hinged lower rear flap, which results from the doubled in the middle rear part rear outer casing of the box and directed backwards:

Fig.4,3 - Fig.4,5 and Fig.4,10 - Fig.4,12 and Fig.4,16 - Fig.4,18

and Fig.4,22 - Fig.4,24 and Fig.4,28 - Fig.4,30 and Fig.4,34 - Fig.4,36 and Fig.34,40 - Fig.4,42 and Fig.4,46 - Fig.4,48 show the box in the axonometric projection with the independently opened or closed lower rear flap, which results from the doubled in the middle rear part rear outer casing of the box and directed backwards, and with opened or closed upper hinged lid.

Fig.4, 6 shows the blank of the inner front wall – the inner wings in their unfolded position.

Fig.4,7; Fig.4,13; Fig.4,19; Fig.4,25; Fig.4,31; Fig.4,37; Fig.4,43; Fig.4,49 show the blank of the outer rear casing in different variants, from which results the independently hinged lower rear flap.

Fig.4,1; Fig.4,2 and Fig.4,8; Fig.4,9 and Fig.4,14; Fig.4,15 and Fig.4,20; Fig.4,21 and Fig.4,26; Fig.4,27 and Fig.4,32; Fig.4,33 and Fig.4,38; Fig.4,39 and Fig.4,44; Fig.4,45 show the side views of the box in different variants with the independently hinged lower rear flap.

As presented in Fig.1,1 - Fig.4,49, the cigarette box according to the present invention includes the hinged lid – the upper cover, or/and outer flange, which results from the inner front blank of the box, and has the shape based on the rectangular prism and comprises the storage part for the cigarettes and the additional separate independent storage part arranged on the front or rear of the box.

The cigarettes box has the hinged lid (1) joined to the storage part by means of the articulated joint (47) arranged on the rear wall (2), wherein the front wall (12) of the lid (1) is longer than its rear wall, and the side walls (12) of the lid (1) are oblique.

Said storage part in the variants illustrated in the Fig.1,4 - Fig.1,7 and Fig.1,11 - Fig.1,14 and Fig.1,20 - Fig.1,23 and Fig.1,27 - Fig.1,31 and Fig.1,37 - Fig.1,40 and Fig.1,44 - Fig.1,47 and Fig.1,53 - Fig.1,56 and Fig.1,60 - Fig.1,64 is provided with the additional inner blank of the box in the variants presented in the Fig.1,2; Fig.1,3; Fig.1,18; Fig.1,19; Fig.1,35; Fig.1,36; Fig.1,51; Fig.1,52 forming the inner (46) or/and outer flange (45 30 34 35) of the box and the outer front wall – the lower front flap (5) of the additional storage part, which results from the outer casing in the variants presented in the Fig.1,8; Fig.1,9; Fig.1,15; Fig.1,16; Fig.1,24; Fig.1,25; Fig.1,32; Fig.1,33; Fig.1,41, Fig.1,42; Fig.1,48; Fig.1,49; Fig.1,57; Fig.1,58; Fig.1,65; Fig.1,66 is independently opened from the upper hinged lid. (1), whereas between the independently hinged front wall – the lower front flap (5) and the inner front wall (46) or (30) there is the additional storage space to place the overprint or objects, and/or the box comprises the additional storage part formed on the rear part of the box, presented in the Fig.2,6 - Fig.2,8 and Fig.2,13 - Fig.2,15 and Fig.2,21 - Fig.2,23 and Fig.2,28 - Fig.2,30 and Fig.2,36 - Fig.2,38

and Fig.2,43 - Fig.2,45 and Fig.2,51 - Fig.2,53 and Fig.2,58 - Fig.2,60 and Fig.2,66 - Fig.2,68 and Fig.2,73 - Fig.2,75 and Fig.2,81 - Fig.2,83 and Fig.2,88 - Fig.2,90 and Fig.2,95 - Fig.2,97 and Fig.2,103 - Fig.2,105 and Fig.2,111 - Fig.2,113 and Fig.2,118 - Fig.2,120 and formed by means of the main middle rear wall (2) of the box outer casing and lower rear flap (38) independently hinged from the upper hinged lid (1).

Said independently hinged lower rear flap (38) results from the inner front blank of the box as shown in the Fig.2,3; Fig.2,4 and Fig.2,11; Fig.2,12 and Fig.2,18; Fig.2,19 and Fig.2,26; Fig.2,27 and Fig.2,33; Fig.2,34 and Fig.2,41; Fig.2,42 and Fig.2,48; Fig.2,49 and Fig.2,56; Fig.2,57 and Fig.2,63; Fig.2,64 and Fig.2,71; Fig.2,72 and Fig.2,78; Fig.2,79 and Fig.2,86; Fig.2,87 and Fig.2,93; Fig.2,94 and Fig.2,100; Fig.2,101 and Fig.2,108; Fig.2,109 and Fig.2,116; Fig.2,117 - its additional lower elongated wall (38) and directed backwards. Said inner front blank of the box consequently forms the outer flange of the box by means of the wall (30) and/or the walls (30, 35, 34); and/or the box includes the additional storage part arranged on the rear part of the box as presented in the Fig.3,5 - Fig.3,9 and Fig.3,16 - Fig.3,20 and Fig.3,27 - Fig.3,31 and Fig.3,38 - Fig.3,42 and Fig.3,49 - Fig.3,53 and Fig.3,60 - Fig.3,64 and Fig.3,71 - Fig.3,75 and Fig.3,82 - Fig.3,86 and formed by the main middle rear wall (2) and the lower rear flap (5) hinged independently from the upper hinged lid (1).

Said independently hinged lower rear flap (5) results from the outer casing of the box blank as shown in the Fig.3,10; Fig.3,11 and Fig.3,21; Fig.3,22 and Fig.3,32; Fig.3,33 and Fig.3,43; Fig.3,44 and Fig.3,54; Fig.3,55 and Fig.3,65; Fig.3,66 and Fig.3,76; Fig.3,77 and Fig.3,87 and Fig.3,88, - its additional lower elongated wall (5) and directed backwards. Said inner front blank of the box, presented in the Fig.3,3; Fig.3,4 and Fig.3,14; Fig.3,15 and Fig.3,25; Fig.3,26 and Fig.3,36; Fig.3,37 and Fig.3,47; Fig.3,48 and Fig.3,58; Fig.3,59 and Fig.3,69; Fig.3,70 and Fig.3,80; Fig.3,81 consequently forms the outer flange of the box by means of the wall (30) and/or the walls (30, 35, 34); and/or the box includes the additional storage part arranged on the rear part of the box, as shown in the Fig.4,3 - Fig.4,5 and Fig.4,10 - Fig.4,12 and Fig.4,16 - Fig.4,18 and Fig.4,22 - Fig.4,24 and Fig.4,28 - Fig.4,30 and Fig.4,34 - Fig.4,36 and Fig.4,40 - Fig.4,42 and Fig.4,46 - Fig.4,48 and formed by the main middle rear wall (2) and lower rear flap (25) independently hinged from the upper hinged lid (1).

Said independently hinged lower rear flap (25) results from the outer casing of the box that is doubled in the middle part by the walls 2 and 21; as shown in the Fig.4,7; Fig.4,13; Fig.4,19; Fig.4,25; Fig.4,31; Fig.4,37; Fig.4,43; Fig.4,49 and its additional lower elongated wall (25) of the lower rear flap and directed backwards. And inside the box are arranged inner wings (18) with the additional wall (56) as the guides for the upper hinged lid (1).

The box with the lower front or rear flap that is hinged independently from the upper hinged lid (1) is characterized also in that, the inner front blank presented in the Fig.1,2; Fig.1,3; Fig.1,18; Fig.1,19; Fig.1,35; Fig.1,36; Fig.1,51; Fig.1,52, and Fig.2,3; Fig.2,4 and Fig.2,11; Fig.2,12 and Fig.2,18; Fig.2,19 and Fig.2,26; Fig.2,27 and Fig.2,33; Fig.2,34 and Fig.2,41; Fig.2,42 and Fig.2,48; Fig.2,49 and Fig.2,56; Fig.2,57 and Fig.2,63; Fig.2,64 and Fig.2,71; Fig.2,72 and Fig.2,78; Fig.2,79 and Fig.2,86; Fig.2,87 and Fig.2,93; Fig.2,94 and Fig.2,100; Fig.2,101 and Fig.2,108; Fig.2,109 and Fig.2,116; Fig.2,117, and Fig.3,3; Fig.3,4 and Fig.3,14; Fig.3,15 and Fig.3,25; Fig.3,26 and Fig.3,36; Fig.3,37 and Fig.3,47; Fig.3,48 and Fig.3,58; Fig.3,59 and Fig.3,69; Fig.3,70 and Fig.3,80; Fig.3,81 does not have the overpresses - the wall (46) and/or has one overpress – the wall (30) against the wall (29) or has more overpresses (44) or/and (45) or/and (30, 34, 35) against the wall (29), which consequently form the visible outer flange of the box without opening the lower flap or after the flap is opened, independently whether the lower flap is arranged on the front or rear of the box.

At the same time the box is characterized in that, the inner front wall (30) for the variants presented in the Fig.3,1-Fig.3,88 does not have the additional lower wall directly joined to the bottom wall (50) and/or for the variants presented in the Fig.2,1-Fig.2,120 it has the additional lower wall (38) directly joined to the bottom wall (50), and in that, the outer casing of the box for the variants presented in the Fig.1,1-Fig.1,66 and Fig.3,1-Fig.3,88 has the additional lower wall (5) joined to the bottom wall (8).

The box for the variants presented in the Fig.2,1-Fig.2,120; Fig.3,1-Fig.3,88; Fig.4,1-Fig.4,49 with the lower rear flap (38) or (5) or (25) that is hinged independently from the upper hinged lid (1), is characterized in that, the outer casing of the box (Fig.2,5; Fig.2,20; Fig.2,35; Fig.2,50 and Fig.2,65; Fig.2,80; Fig.2,102; Fig.2,110 and Fig.3,3; Fig.3,4 and Fig.3,14; Fig.3,15 and Fig.3,25; Fig.3,26 and Fig.3,36; Fig.3,37 and Fig.3,47; Fig.3,48 and Fig.3,58; Fig.3,59 and Fig.3,69; Fig.3,70 and Fig.3,80; Fig.3,81 and Fig.4,7; Fig.4,13; Fig.4,19; Fig.4,25; Fig.4,31; Fig.4,37; Fig.4,43; Fig.4,49), and more precisely its main middle rear wall (2) does not have and/or has one overpress (16) or more overpresses (15), (19), and the lower elongated wall (38) or (5) or (25) forms the independently hinged lower rear flap and forms the additional storage space with the wall (2). The storage part placed on the rear wall (2) of the box has a closing line (14) for the lower rear flap (5, 38, and 25).

The storage part, which is separate and independent from the upper hinged lid and is formed on the front or rear side of the box, is advantageous to place the overprint or the objects.

Claims

1. A cigarette box with a flap hinged independently from an upper hinged lid, comprising an inner front blank and a blank of a casing, characterized in that, it includes a lower front flap (5) arranged on the front, which is opened independently from the upper hinged lid (1) and directly results from the box outside casing blank together with overpresses (9) or without overpresses and includes the inner front blank of the box together with overpresses (44 and 45) and/or (30, 35 and 34) against the wall (29), or without overpresses (46), with the joint configuration of these two blanks.

2. A box according to claim 1, characterized in that, the lower front flap (5) arranged on the front is hinged independently from the upper hinged lid (1) and directly results from the outer blank of the box casing, includes the outer side walls (11, 51, 6 and 7, 52, 6), and/or which preferably have the element made of transparent or semi-transparent material and which is single or double-layered.

3. A box according to claim 1 or 2, characterized in that, the length of the lower wall - the flap (5) of the box outer casing blank after folding its additional side walls (11 and 51 and 6) or (7 and 52 and 6) and/or without side walls, and joined to the bottom wall (8) is equal or less than the distance from the front edge of the bottom wall (8) to the lower front edge of the front wall (12) of the upper hinged lid (1).

4. A box according to any of the claims 1-3, characterized in that, the lower front flap (5) which is arranged on the front and is hinged independently from the upper hinged lid (1) and directly results from the outer blank of the box casing, preferably includes the overpress (1) that is directed outwards.

5. A box according to any of the claims 1-4, characterized in that, the lower front flap (5) which is arranged on the front and is hinged independently from the upper hinged lid (1) and directly results from the outer blank of the box casing, does not have the element and/or has the element (9) made of transparent or semi-transparent material, and/or which is embossed towards the outside.

6. A box according to any of the claims 1-5, characterized in that, the inner front wall (46) of the inner front blank of the box with the lower front flap (5) arranged on the front does not have and/or has one (44) or more overpresses directed towards the inside of the box and/or outside of the box (30, 45 and 34, 35) against the wall (29).

7. A box according to any of the claims 1-6, characterized in that, the inner front wall and the inner side walls of the inner front blank of the box with the lower front flap arranged on the front, which is hinged independently from the upper hinged lid, do not form and/or form a visible outer flanges of the box (46) and (30) after the independently hinged front lid (5) is hinged.

8. A box according to any of the claims 1-7, characterized in that, the inner front wall and inner side walls of the inner front blank of the box with the lower front flap arranged on the front, which is hinged independently from the upper hinged lid, do not form and/or form the visible outer flanges of the box (45) and (34 and 35) without hinging the independently hinged lower front flap (5).

9. A box according to any of the claims 1-8, characterized in that, the side walls (33 and 31) of the inner blank are placed under the side walls (4, 2, 20) of the outer casing or the side walls (34) and (35) of the inner blank embossed against the wall (29) are placed over the side walls (4, 3, 20) of the outer casing.

10. A box according to any of the claims 1-9, characterized in that, between the lower front flap (5) arranged on the front, which is hinged independently from the upper hinged lid and directly results from the lower part of the outer blank of the box casing, and the inner front wall (46 and 30) of the inner front blank of the box is located an additional storage space, which is separate and independent from the upper hinged lid.

11. A cigarette box with the flap, which is hinged independently from the upper hinged lid, comprising the inner front blank and the blank of the casing, characterized in that, it includes the lower rear flap (38) arranged on the rear, which is hinged independently from the upper hinged lid (1) and directly results from the inner front blank of the box together with the overpresses (30, 34, 35) or one overpress (30) against the wall (29) and directed towards the rear

of the box and includes the shortened blank of the box outer rear casing together with the overpresses (16, 19, 15) or without overpresses, with the joint configuration of these two blanks.

12. A box according to claim 11, characterized in that, the lower rear flap (5) arranged on the rear is hinged independently from the upper hinged lid (1) and directly results from the inner front blank of the box and directed towards the rear part of the box, which does not have (38) or preferably has the outer side walls (40 and 39) or (53 and 43), and/or which do not have or have the overpresses towards the outside of the box and/or do not have or have an cut-outs and/or do not have or have the element made of transparent or semi-transparent material and the wall (38) is single and/or double-layered.

13. A box according to the claims 11 or 12, characterized in that, the length of the lower rear flap (38), which results from the inner front blank of the box after folding its additional side walls and/or without side walls, and joined to the bottom wall (50) is equal or less than the distance from the rear edge of wall (13) and/or the bottom (8) to the articulated joint (47) of the wall (47) of the upper hinged lid (1).

14. A box according to any of the claims 11-13, characterized in that, the lower rear flap (38) arranged on the rear, which is hinged independently from the upper hinged lid (1) and directly results from the inner front blank of the box and directed towards the rear part of the box, does not have the overpress and/or has the overpress (42) directed outwards.

15. A box according to any of the claims 11-14, characterized in that, the lower rear flap (38) arranged on the rear, which is hinged independently from the upper hinged lid (1) and directly results from the inner front blank of the box and directed towards the rear part of the box, does not have the element and/or has the element (42) made of transparent or semi-transparent material, and/or which is embossed towards the outside.

16. A box according to any of the claims 11-15, characterized in that, the inner front wall of the inner front blank of the box includes one overpress (30) or more overpresses (30, 34, 35) against the wall (29), wherein the walls (34) and (35), which are placed over the walls (3 and 20) of the outer casing, form the visible outer flange (30, 34, 35) of the box, or the walls (34 and 35), which are placed under the walls (20 and 3) of the outer box casing, form the visible flange (30) of the box.

17. A box according to any of the claims 11-16, characterized in that, the main rear wall (2) of the main storage part of the box outer casing blank does not have or has one overpress (16) or more overpresses (16, 19, 15) directed towards the inside of the box.

18. A box according to any of the claims 11-17, characterized in that, between the lower rear flap (38) arranged on the rear, which is hinged independently from the upper hinged lid (1) and directly results from the inner front blank of the box and is directed towards the rear part of the box, and the new shortened box outer rear casing, its main rear middle wall (2), the storage space is formed.

19. A cigarette box with the flap, which is hinged independently from the upper hinged lid, comprising the inner front blank and the blank of the casing, characterized in that, it comprises the rear flap (5) arranged on the rear, which is hinged independently from the upper hinged lid (1) and directly results from the box outer casing blank and directed - reversed towards the rear part of the box by means of an articulated joint (17) located on the bottom wall (8) together with the overpresses (16, 19, 15) or without overpresses (2) and the inner front blank of the box together with the overpresses (30, 34, 35) or with one overpress (3) against the wall (29), together with the joint configuration of these two blanks.

20. A box according to claim 19, characterized in that, the lower rear flap (5) arranged on the rear is hinged independently from the upper hinged lid (1) and directly results from the lower part of the box outer casing blank and directed - reversed towards the rear part of the box by means of the articulated joint (17) located on the bottom wall (8), and does not have (5) and/or has the side walls (11, 51, 6) or (7, 52, 6) and is single and/or double-layered.

21. A box according to the claims 19 or 20, characterized in that, the length of the lower wall (5) of the outer blank of the box casing and directed - reversed towards the rear, after folding its additional side walls (11, 51, 6) or (7, 52, 6) and/or without side walls, joined to the bottom wall (8) is equal or less than the distance from the rear edge of the bottom wall (8) to the rear articulated joint (47) of the upper hinged lid (1).

22. A box according to any of the claims 19-21, characterized in that, the lower rear flap (5) arranged on the rear is hinged independently from the upper hinged lid (1) and directly

results from the lower part of the box outer casing blank and directed - reversed towards the rear part of the box, does not have or has the cut-out opening (9) and/or does not have (5) the overpress and/or has the overpress directed towards the outside.

23. A box according to any of the claims 19-22, characterized in that, the lower rear flap (5) arranged on the rear is hinged independently from the upper hinged lid (1) and directly results from blank of the box outer rear casing directed and reversed towards the rear part of the box and does not have (5) the element or has the element (9) made of transparent or semi-transparent material and/or which is embossed towards the outside.

24. A box according to any of the claims 19-23, characterized in that, the inner front wall (30) of the box inner front blank together with its outer side walls (29, 34, 35 and 33, 31) and (50) includes one (30) or more overpresses (34, 30, 35) against the wall (29) directed towards the outside of the box and forms the visible outer flange (30) or together with its side walls it forms the visible flange (34, 35, 30) of the box without opening the independently hinged rear flap.

25. A box according to any of the claims 19-24, characterized in that, the inner front wall (30) of the box inner front blank includes side walls (34 and 35), which are placed over the walls (20, 3) of the outer box casing or has the side walls (30, 31), which are placed under the walls (20, 3) of the blank of the outer casing.

26. A box according to any of the claims 19-25, characterized in that, the lower wall (5) of the box outer casing blank does not have (5) or has outer side walls (7, 52), and/or which have or do not have the overpresses and/or do not have or have the cut-outs and/or do not have or have the element made of transparent or semi-transparent material.

27. A box according to any of the claims 19-26, characterized in that, the outside side edges of the lower wall (5) of the box outer casing blank are longer than the parallel outer walls (11, 51, 6) of its joined outer side walls.

28. A box according to any of the claims 19-27, characterized in that, the main rear wall (2) of the main storage space of the box outer casing blank does not have or has the overpresses (16) or/and (19) or/and (15) directed towards the inside of the box.

29. A box according to any of the claims 19-28, characterized in that, the lower wall (5) of the box outer casing blank and/or includes the side walls (11, 51, 6) or (7, 52, 6), the total area of which is equal or less than the area of the lower wall (5) of the outer casing blank.

30. A box according to any of the claims 19-29, characterized in that, between the lower rear flap (38) arranged on the rear, which is hinged independently from the upper hinged lid (1) and directly results from the box outer casing blank and directed towards the rear of the box by means of an articulated joint (17) located on the bottom wall (8), and the rear casing, its main middle wall (2) of the box, the additional storage space is formed, which is separate and independent.

31. A cigarette box with the flap, which is hinged independently from the upper hinged lid, comprising the inner front blank and the blank of the casing, characterized in that, it includes the rear flap (25) arranged on the rear, which is hinged independently from the upper hinged lid (1) and directly results from the rear wall doubled in its middle part (21) and the bottom wall (23) joined to it and to the bottom wall of the lower wall – lower flap (25) of the box blank – the outer rear casing and directed towards the rear part of the box, together with the overpresses or without overpresses and includes the inner front blank of the box - the inner middle wings (18) with the joined wall (56) as the guides for the upper hinged lid (1).

32. A box according to claim 31, characterized in that, the lower rear flap (25) arranged on the rear is hinged independently from the upper hinged lid (1) and directly results from the doubled main rear wall (2) in the middle part of the wall (21) and the bottom wall (23) joined to it and the lower flap (25), which is joined to the bottom wall (21) is directed towards the rear part of the box and does not have and/or has the side walls (54, 27, 26) and (55, 28, 26) and is single-layered (25) and/or double-layered.

33. A box according to claim 31 or 32, characterized in that, the main rear wall (2) of the box outer casing blank and its laterally doubled wall (21) are joined to each other by means of a common parallel projected wall (20).

34. A box according to any of the claims 31-33, characterized in that, the main rear wall (2) of the box outer casing blank includes the outer side walls (3, 20), which have the outer edges, the length of which is equal or less than the distance from the front edge of the bottom

wall (23) to the lower front edge of the front wall (12) of the upper hinged lid (1) and their length is equal to the length of the doubled wall (21), and the outside edges of the outer side walls (20, 3) of the main rear wall (2) and outer edges of the outer side walls (22, 20) of the doubled wall (21) are parallel projected.

35. A box according to any of the claims 31-34, characterized in that, the length of the lower wall of the outer casing blank – the lower rear wall (25) of the box after folding its additional side walls (54, 27, 26) or (55, 28, 26) and/or without side walls, joined to the bottom wall (23) of the doubled rear wall (21) of the box casing, is equal or less than the distance from the rear edge of the bottom wall (23) to the rear articulated joint (47) of the wall of the upper hinged lid (1).

36. A box according to any of the claims 31-35, characterized in that, the independently hinged lower rear flap (25) does not have or has the cut-out opening (24) and/or does not have the overpress and/or has the overpress (24) directed outwards after it is located on the rear, and which includes and/or not the element made of transparent or semi-transparent material, and/or which is embossed to the outside.

37. A box according to any of the claims 31-36, characterized in that, the lower wall of the box outer casing blank – the flap (25) of the box and/or includes the side walls (54, 27, 26) or (55, 28, 26), the total area of which is equal or less than the area of the lower wall – the flap (25) of the outer casing blank.

38. A box according to any of the claims 31-37, characterized in that, the outer side edges of the lower wall – the flap (25) of the box outer casing blank are longer than the parallel outer edges of its joined outer side walls (55, 28, 26).

39. A box according to any of the claims 31-38, characterized in that, the lower wall - the flap (25) of the box outer casing blank does not have or has the outer side walls (54 and 27) and/or which do not have or have the overpresses and/or which do not have or have the cut-outs and/or do not have or have the element made of transparent or semi-transparent material.

40. A box according to any of the claims 31-39, characterized in that, the rear wall (2) of the main storage part of the box outer casing blank, does not have or has overpresses (16, 19, 15) directed towards the inside of the box.

41. A box according to any of the claims 31-40, characterized in that, the articulated joint to direct the lower rear flap (25) towards the rear part of the box is placed between the bottom wall (23) and wall (25) of the outer box casing.

42. A box according to any of the claims 31-41, characterized in that, the inner front wall of the box in this box variant is construed by means of the inner middle wings (18) together with the joined wall (56).

43. A box according to any of the claims 31-42, characterized in that, between the lower rear flap (25), which is hinged independently from the upper hinged lid (1) and directly results from the doubled main rear wall (2) to wall (21) of the rear middle part of the box outer casing blank and directed towards the rear part of the box, and the rear casing of the box, its main rear wall (2), the storage space is formed.

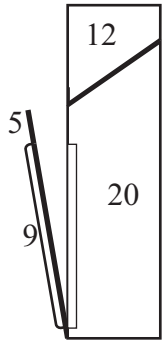


Fig.1,1

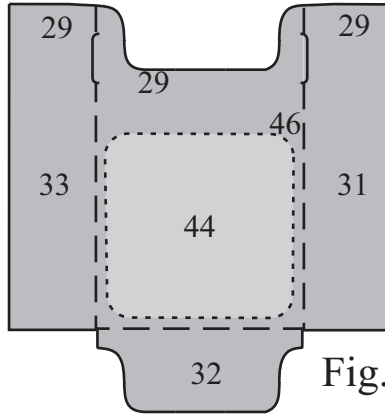


Fig.1,2

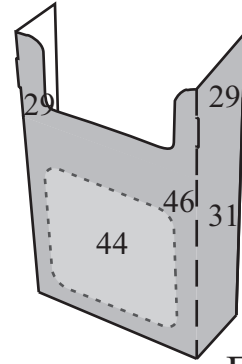


Fig.1,3

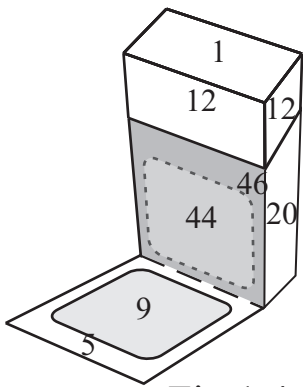


Fig.1,4

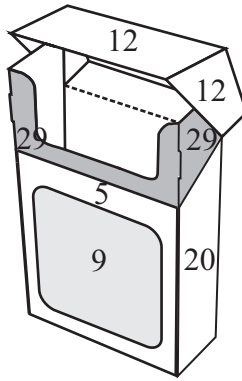


Fig.1,5

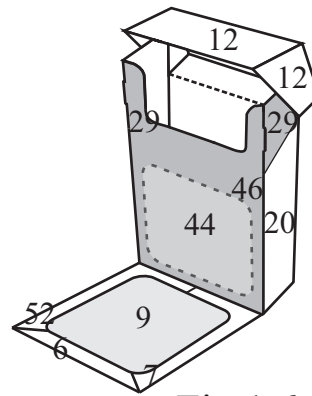


Fig.1,6

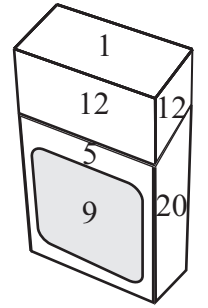


Fig.1,7

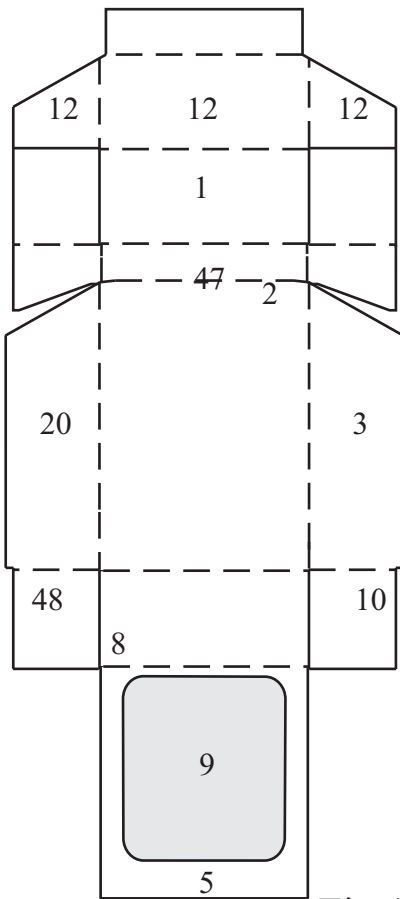


Fig.1,8

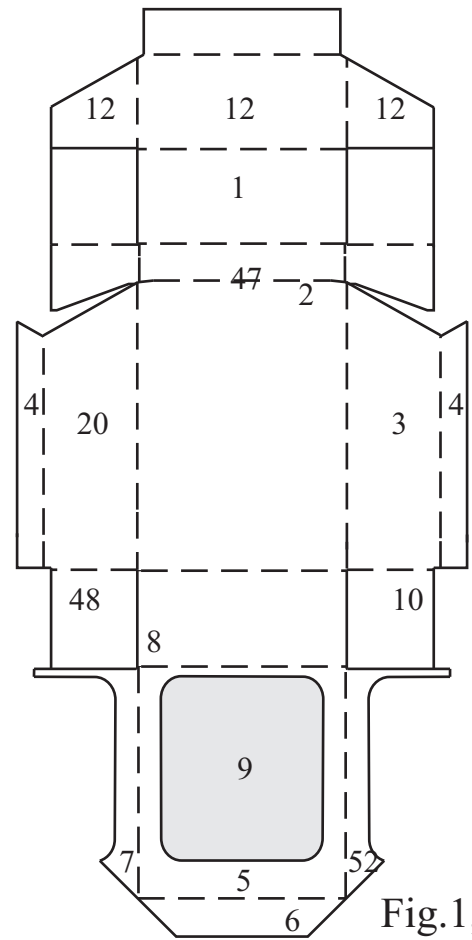


Fig.1,9

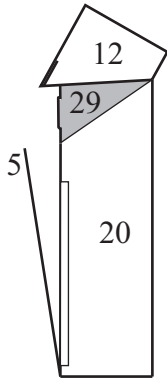


Fig.1,10

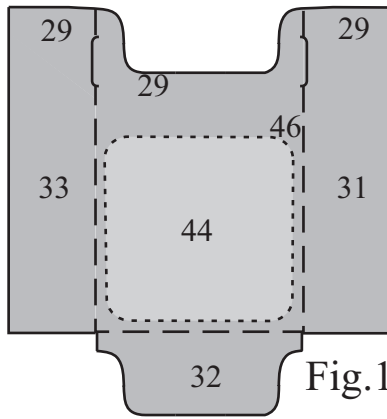


Fig.1,2

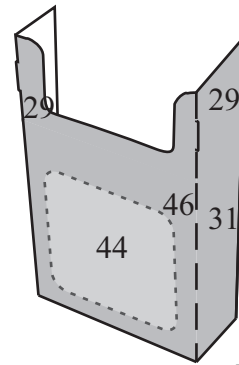


Fig.1,3

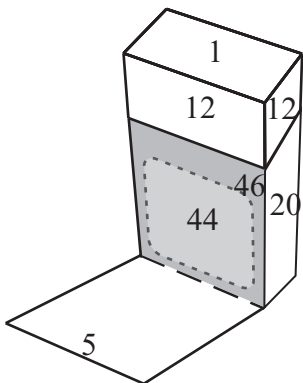


Fig.1,11

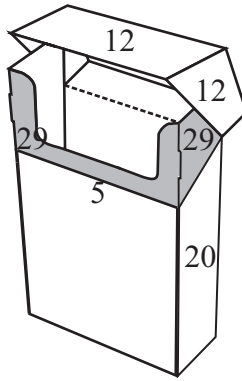


Fig.1,12

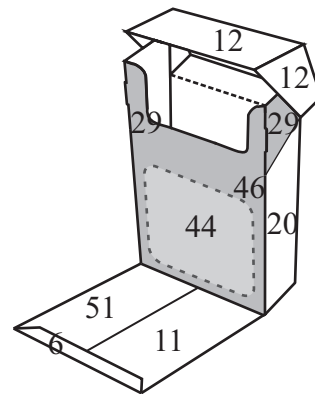


Fig.1,13

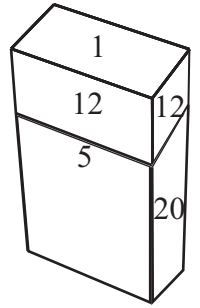


Fig.1,14

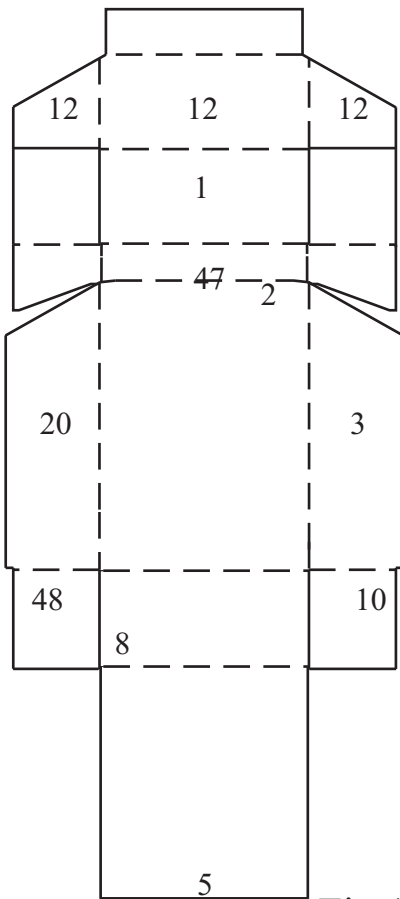


Fig.1,15

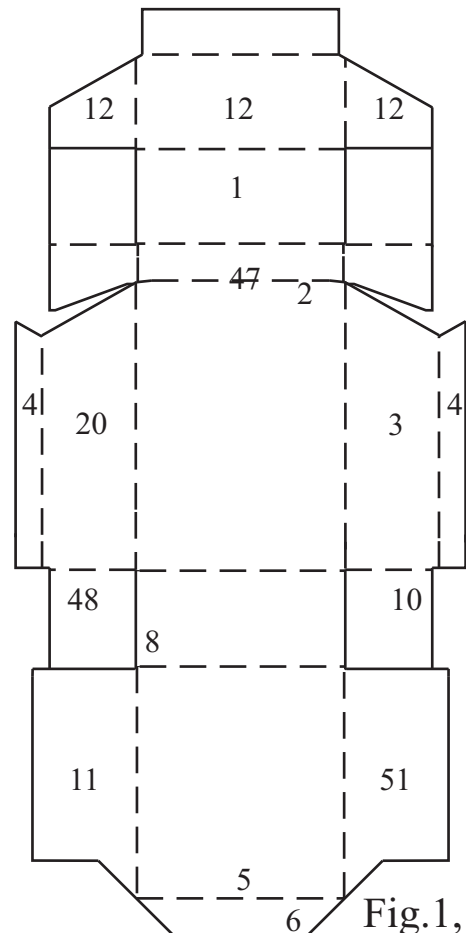


Fig.1,16

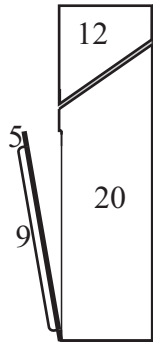


Fig. 1,17

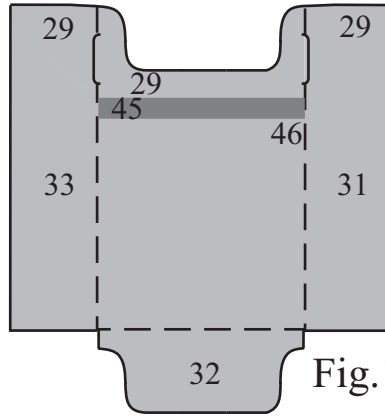


Fig. 1,18

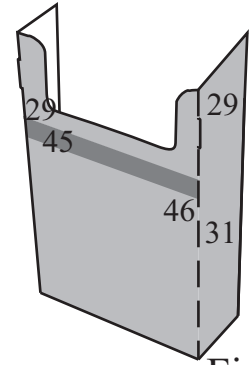


Fig. 1,19

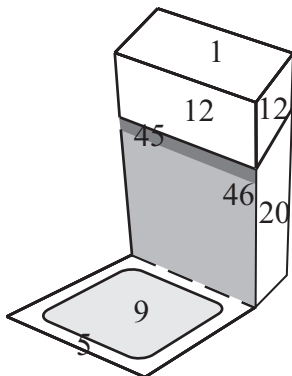


Fig. 1,20

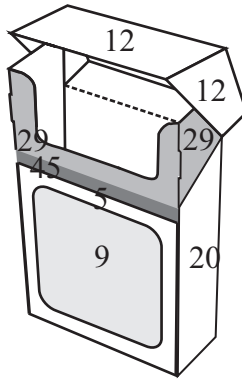


Fig. 1,21

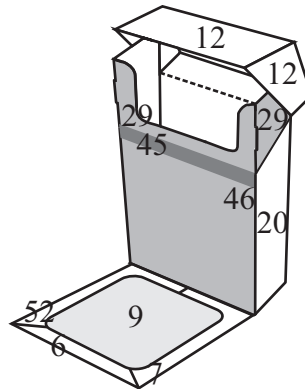


Fig. 1,22

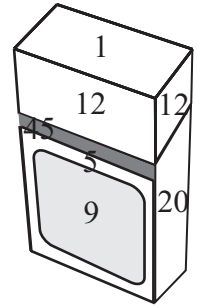


Fig. 1,23

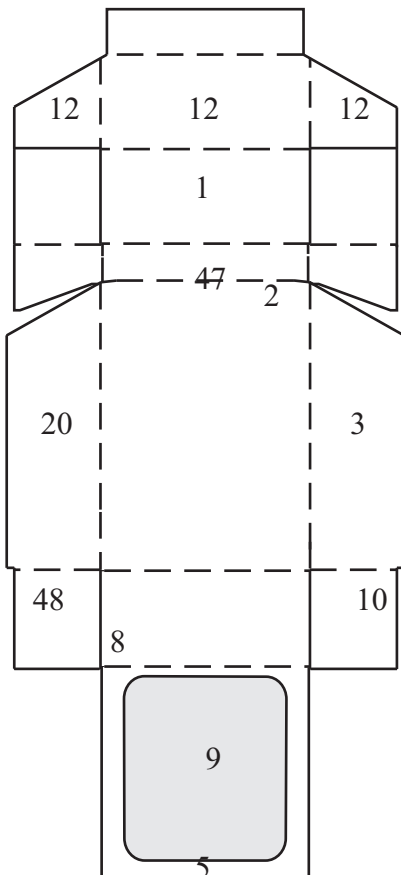


Fig. 1,24

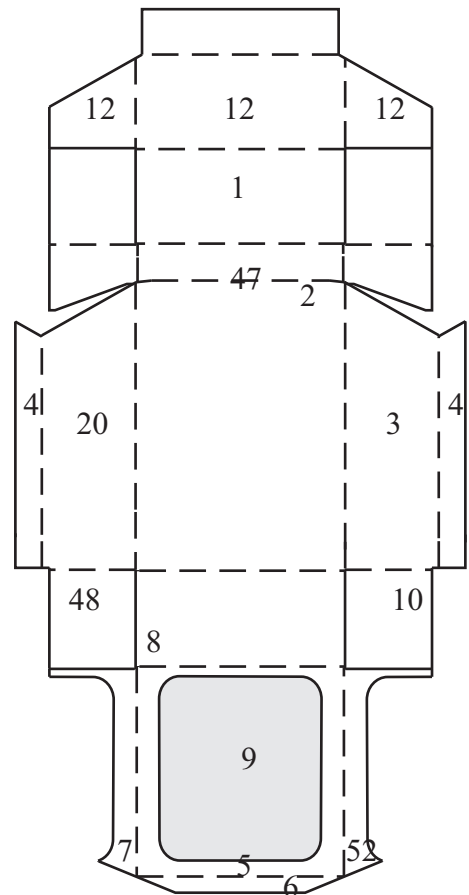


Fig. 1,25

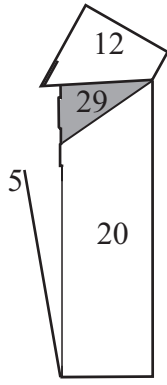


Fig.1,26

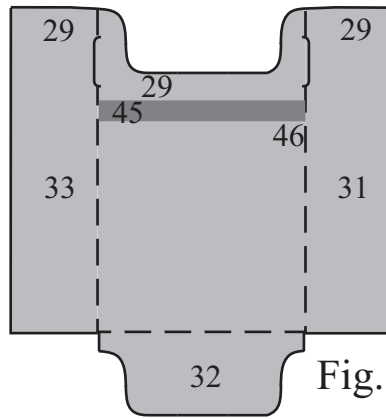


Fig.1,18

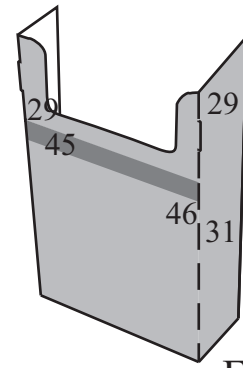


Fig.1,19

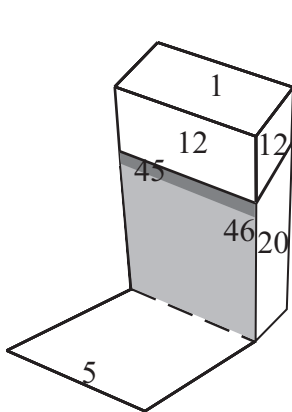


Fig.1,27

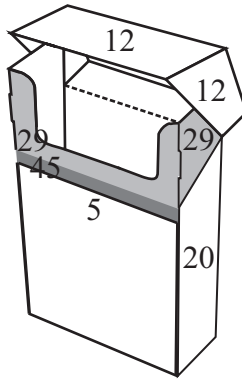


Fig.1,29

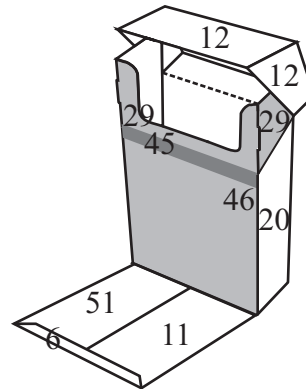


Fig.1,30

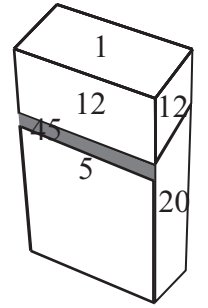


Fig.1,31

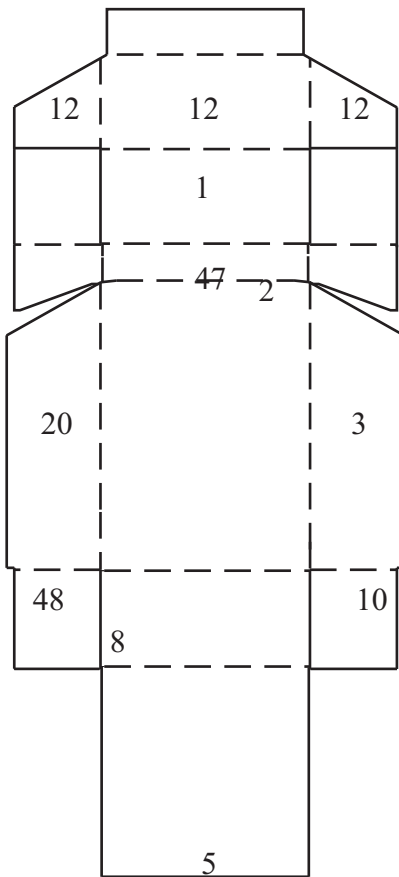


Fig.1,32

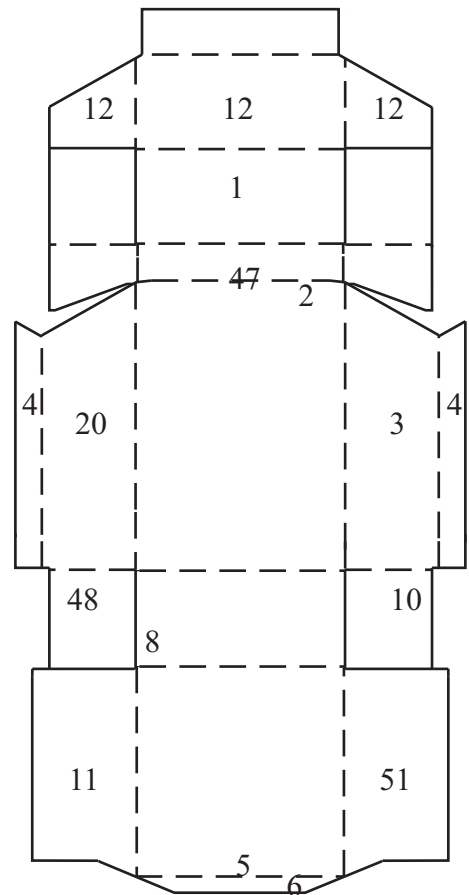


Fig.1,33

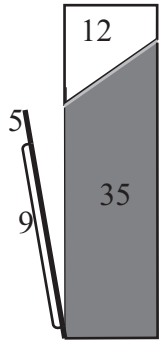


Fig. 1,34

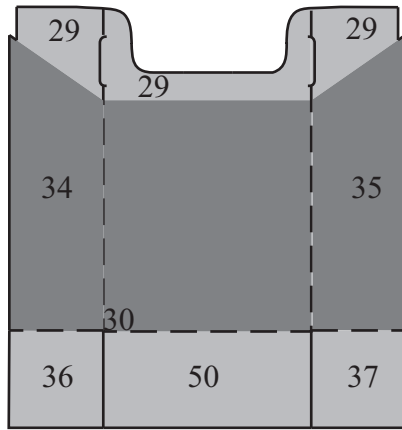


Fig. 1,35

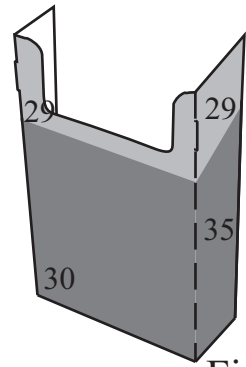


Fig. 1,36

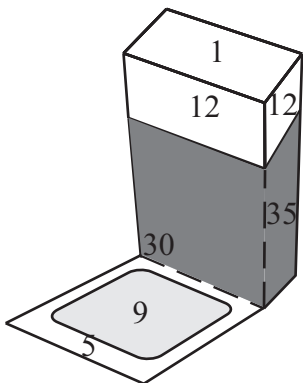


Fig. 1,37

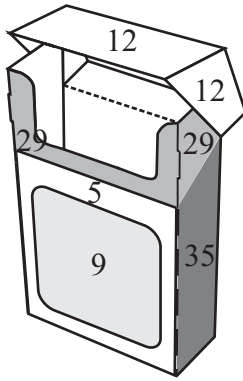


Fig. 1,38

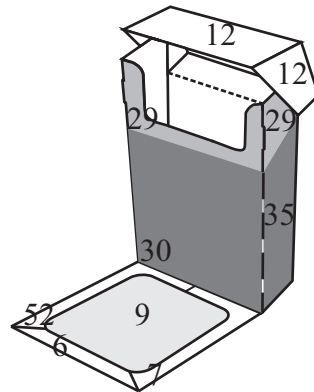


Fig. 1,39

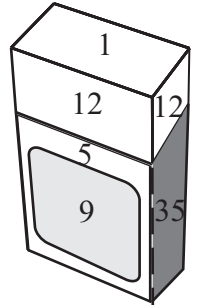


Fig. 1,40

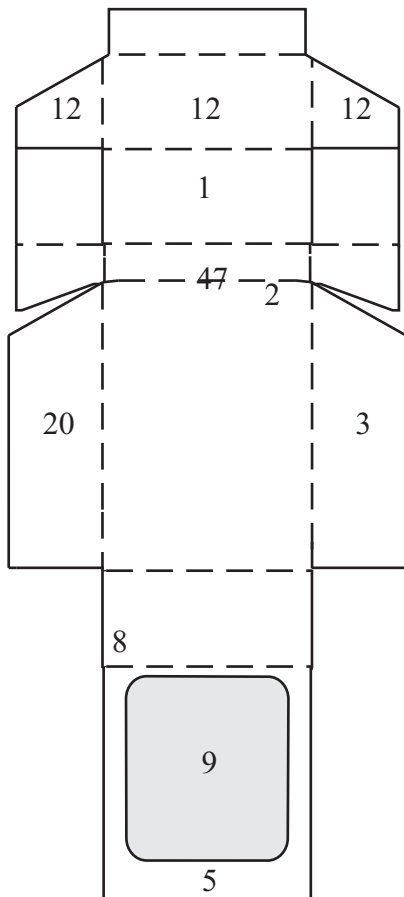


Fig. 1,41

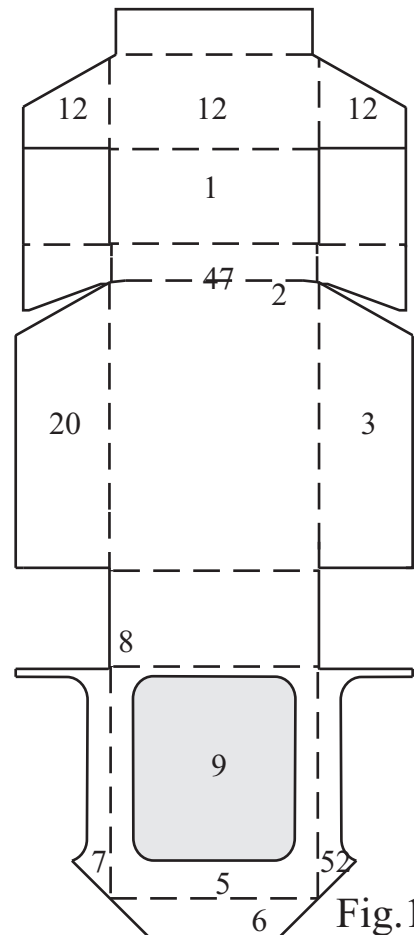


Fig. 1,42

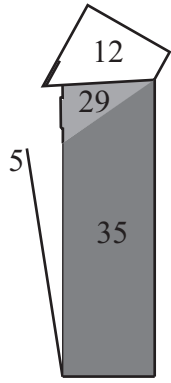


Fig.1,43

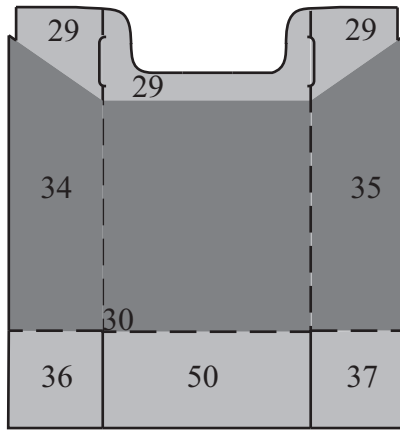


Fig.1,35

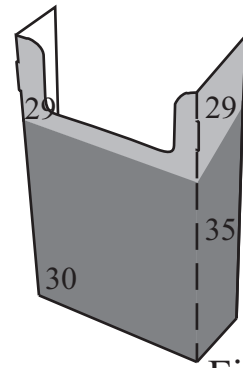


Fig.1,36

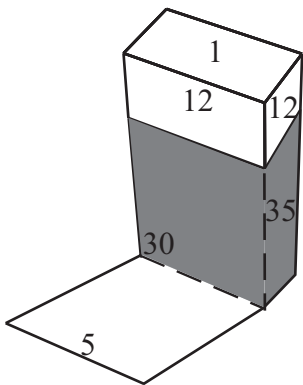


Fig.1,44

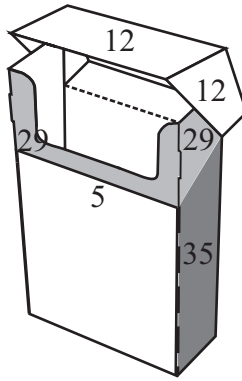


Fig.1,45

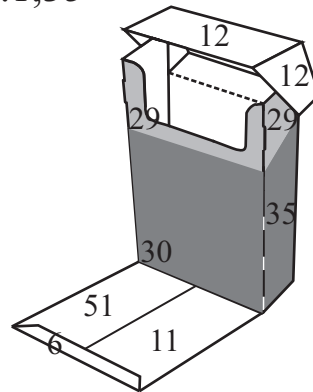


Fig.1,46

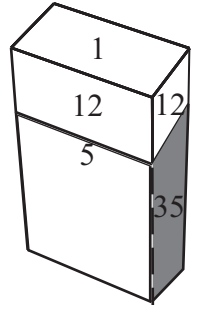


Fig.1,47

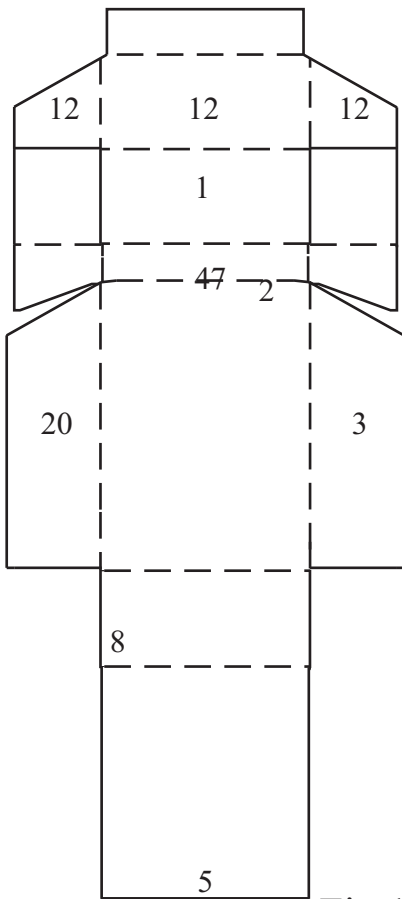


Fig.1,48

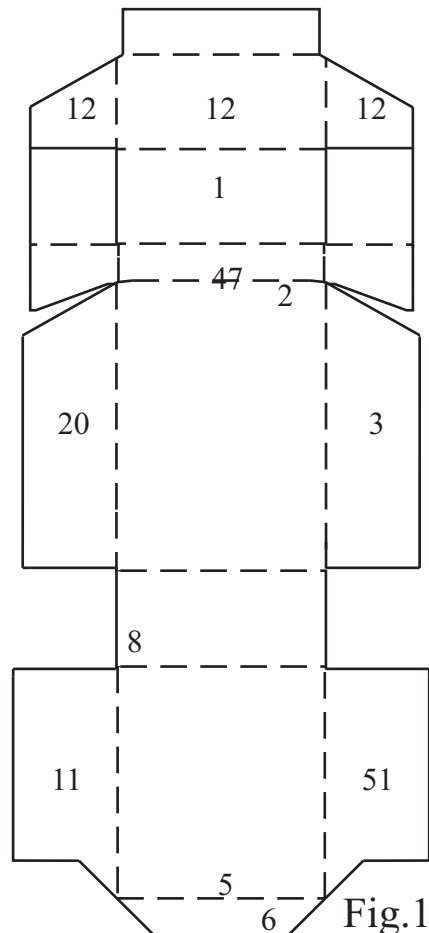


Fig.1,49

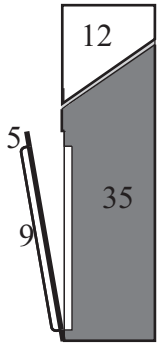


Fig.1,50

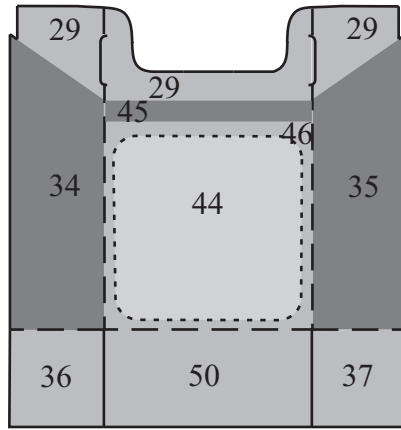


Fig.1,51

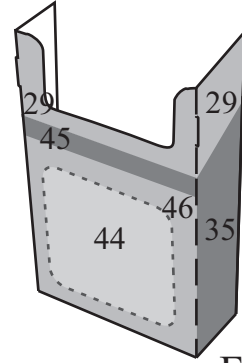


Fig.1,52

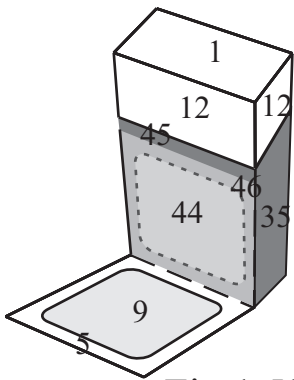


Fig.1,53

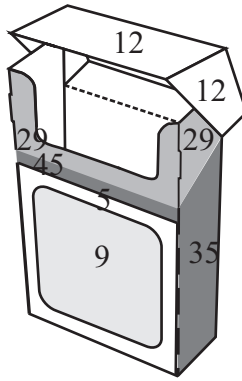


Fig.1,54

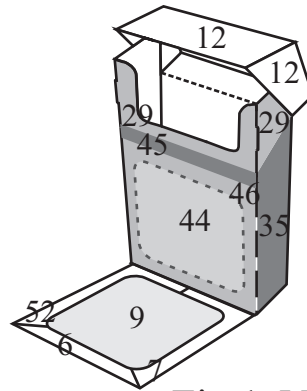


Fig.1,55

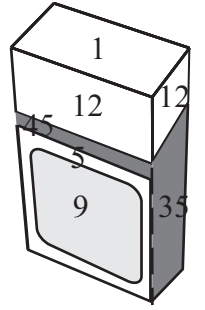


Fig.1,56

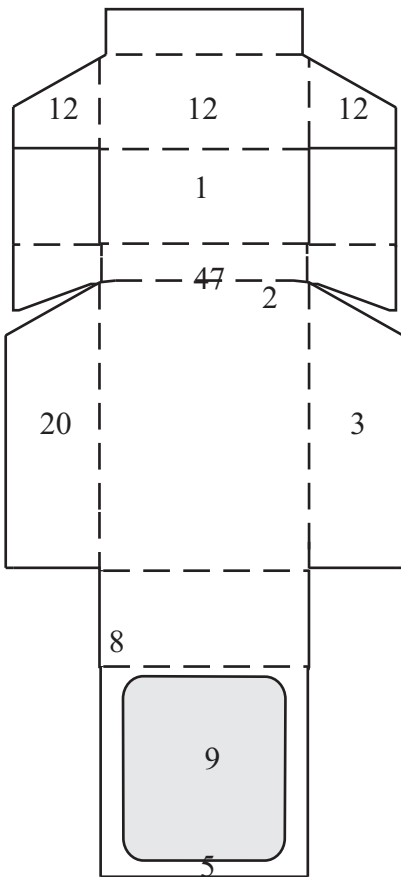


Fig.1,57

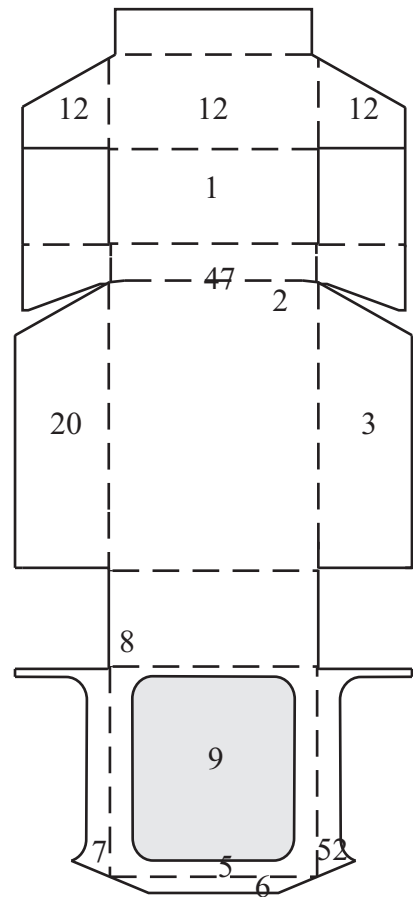


Fig.1,58

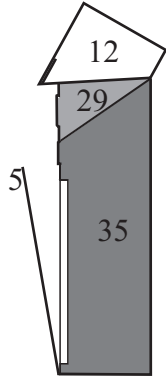


Fig.1,59

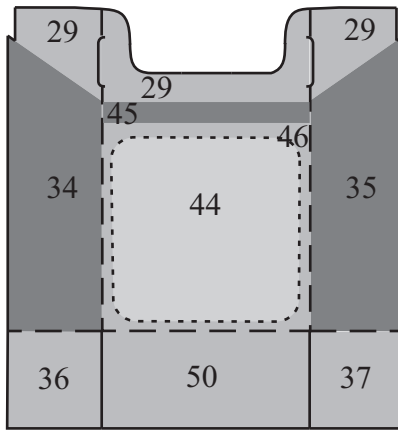


Fig.1,51

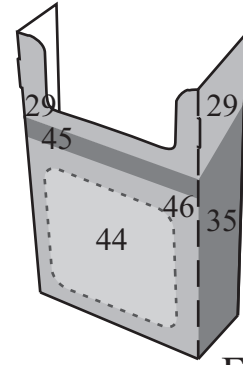


Fig.1,52

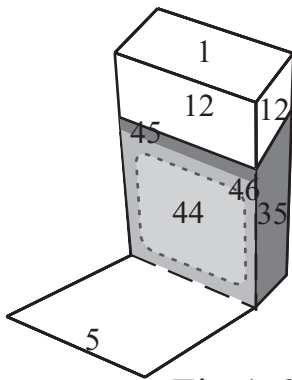


Fig.1,60

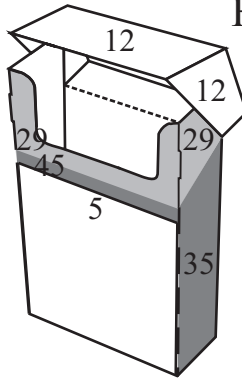


Fig.1,62

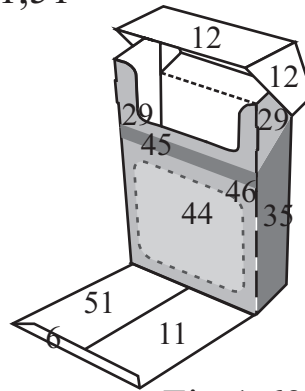


Fig.1,63

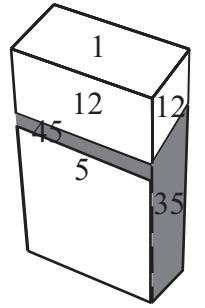


Fig.64

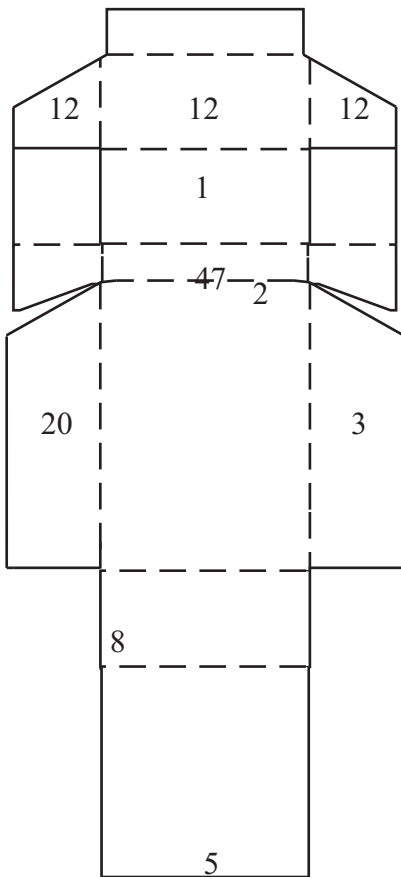


Fig.1,65

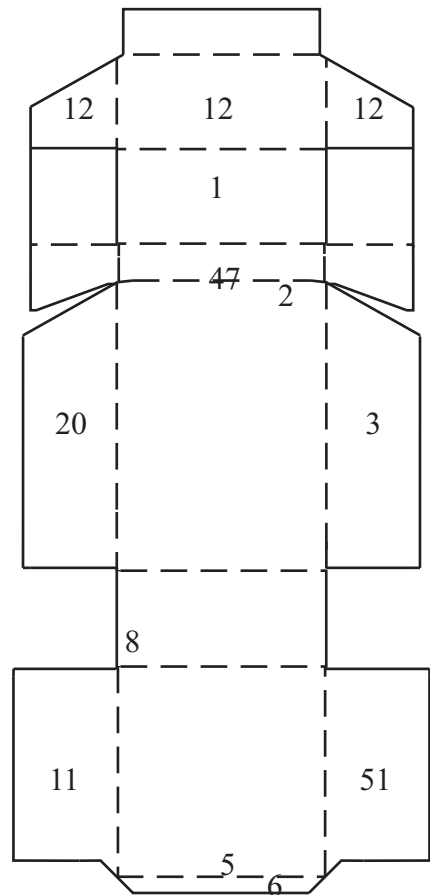


Fig.1,66

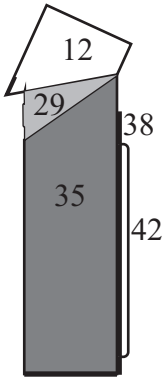


Fig. 2,1

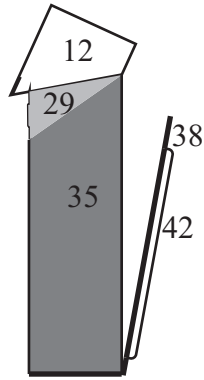


Fig. 2,2

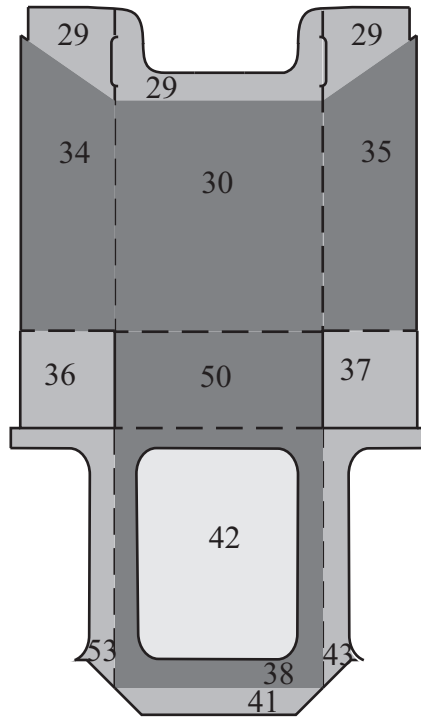


Fig. 2,3

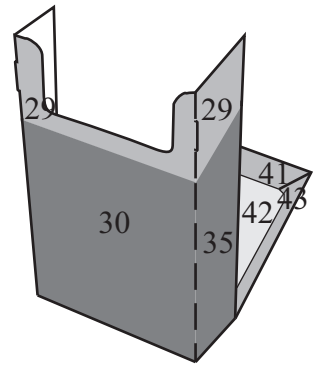


Fig. 2,4

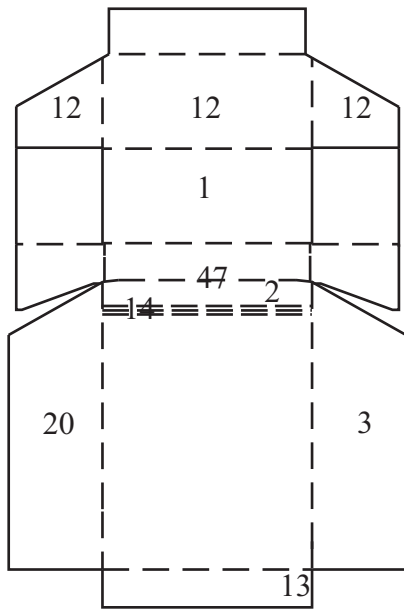


Fig. 2,5

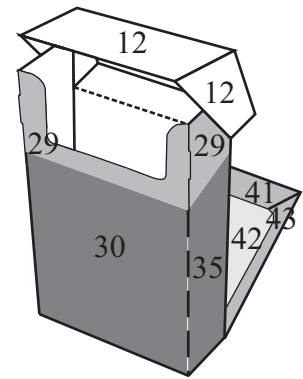


Fig. 2,6

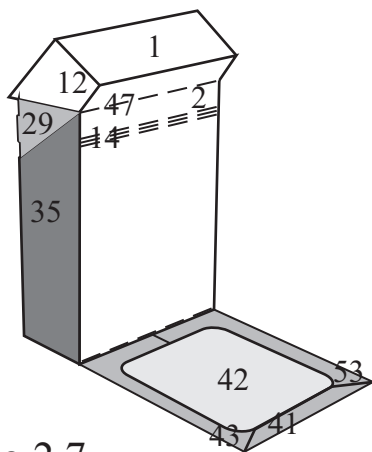


Fig. 2,7

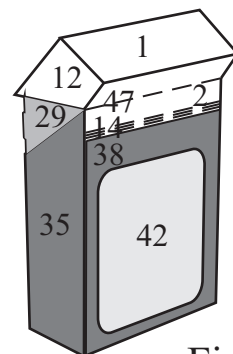


Fig. 2,8

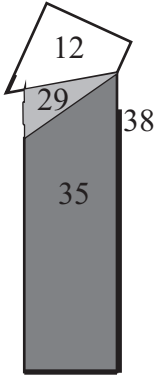


Fig. 2,9

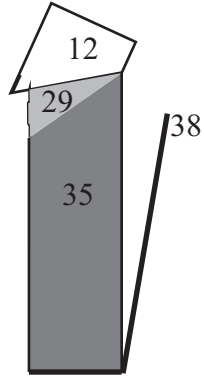


Fig. 2,10

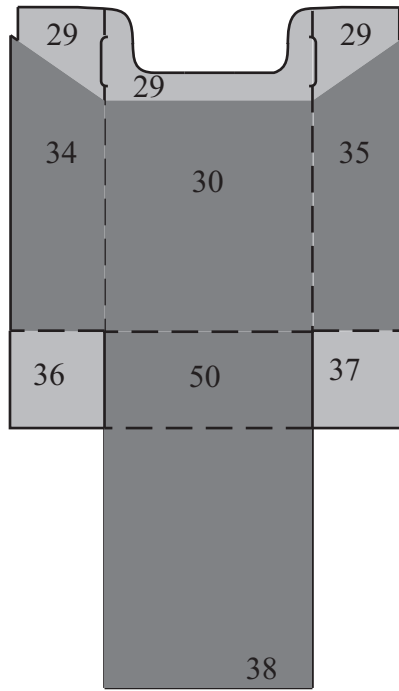


Fig. 2,11

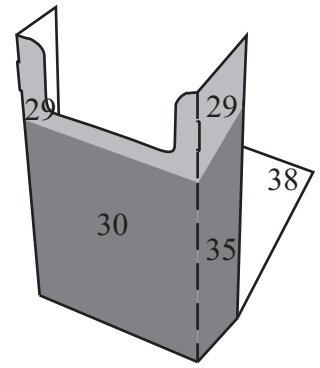


Fig. 2,12

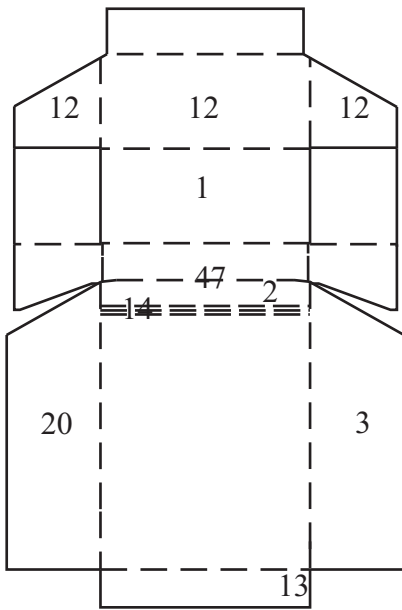


Fig. 2,5

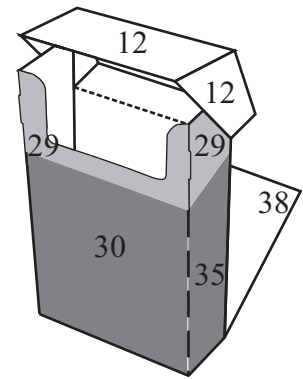


Fig. 2,13

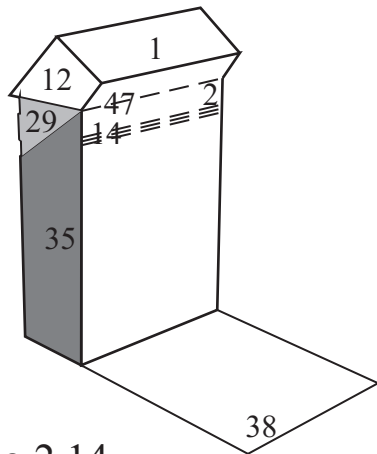


Fig. 2,14

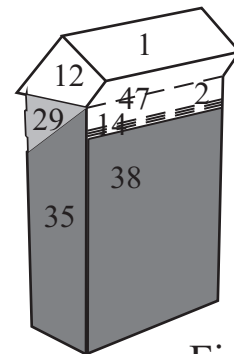


Fig. 2,15

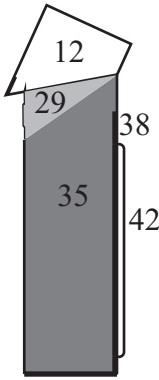


Fig. 2,16

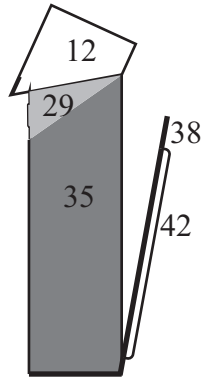


Fig. 2,17

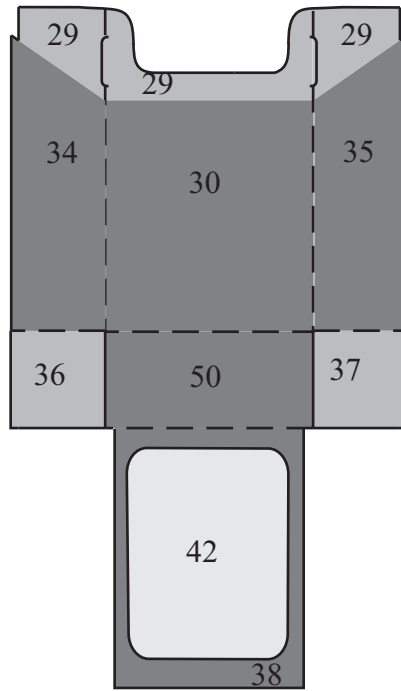


Fig. 2,18

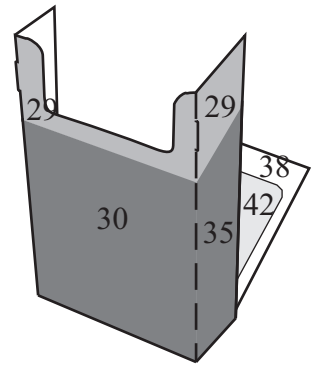


Fig. 2,19

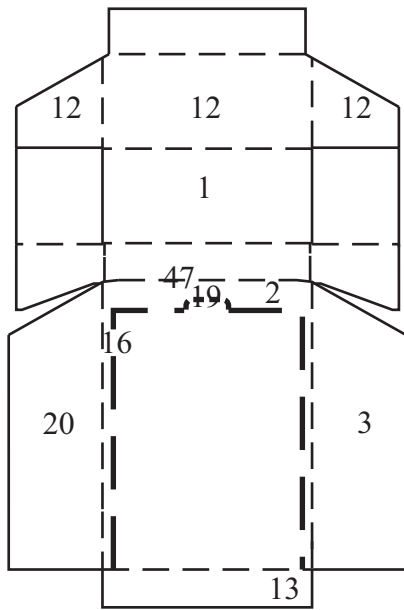


Fig. 2,20

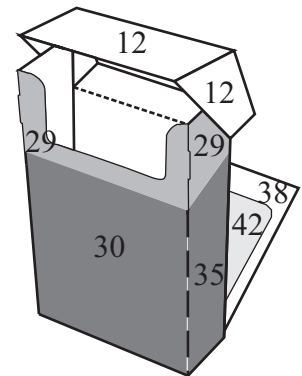


Fig. 2,21

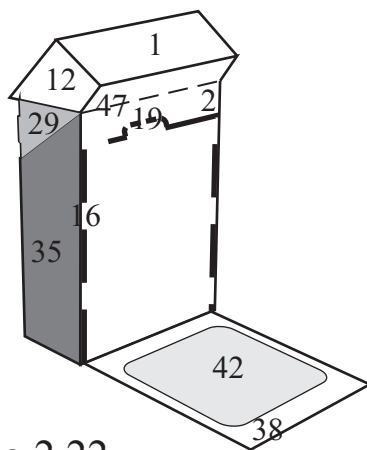


Fig. 2,22

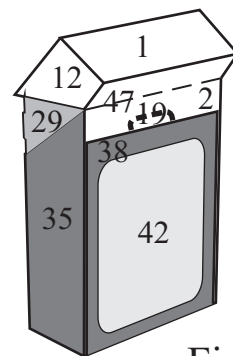


Fig. 2,23

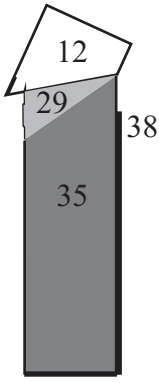


Fig. 2,24

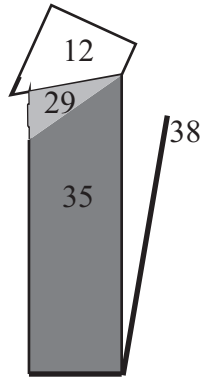


Fig. 2,25

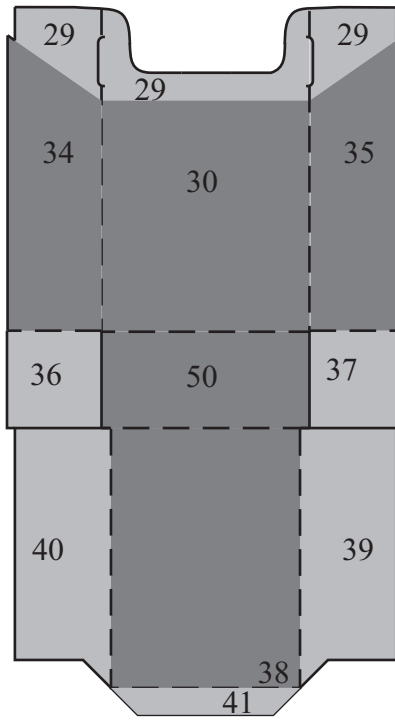


Fig. 2,26

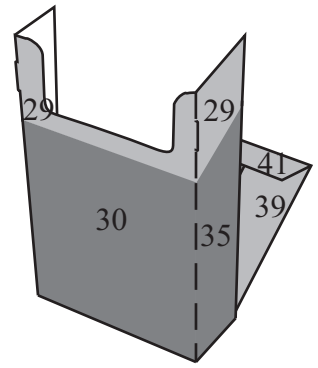


Fig. 2,27

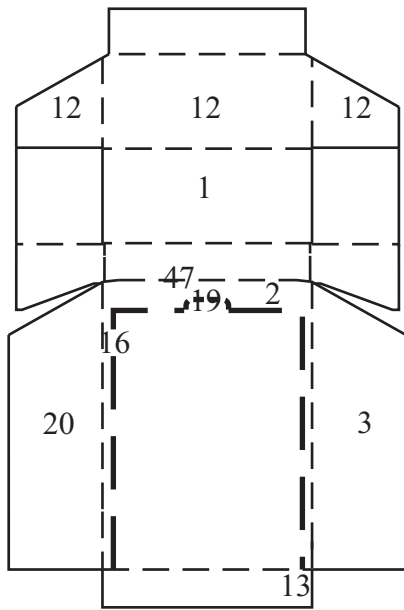


Fig. 2,20

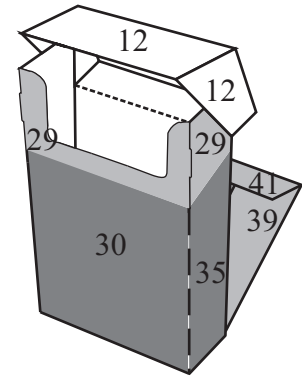


Fig. 2,28

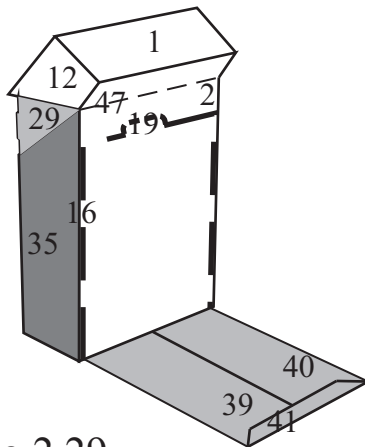


Fig. 2,29

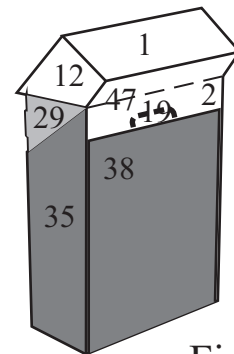


Fig. 2,30

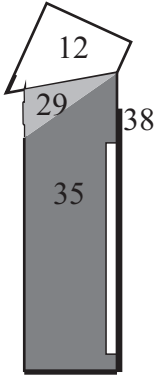


Fig. 2,31

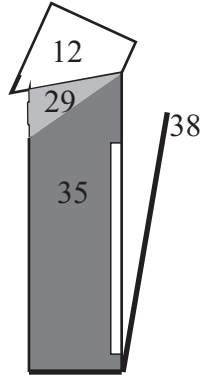


Fig. 2,32

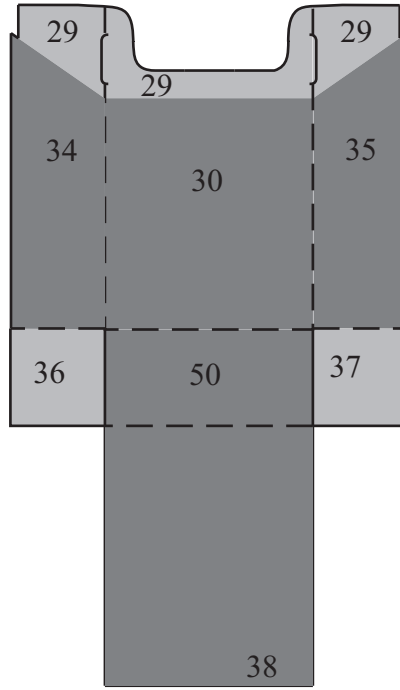


Fig. 2,33

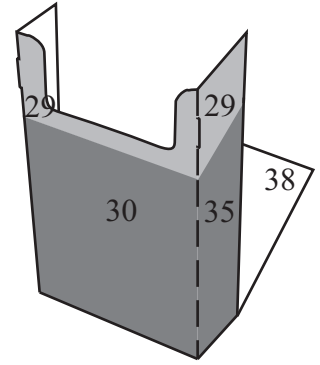


Fig. 2,34

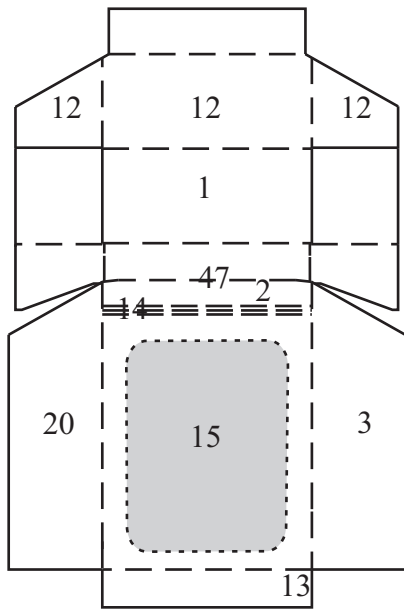


Fig. 2,35

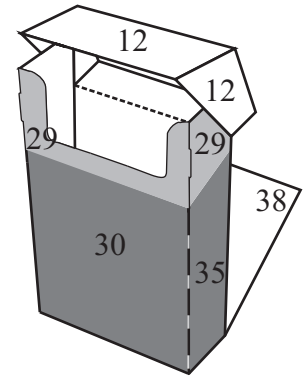


Fig. 2,36

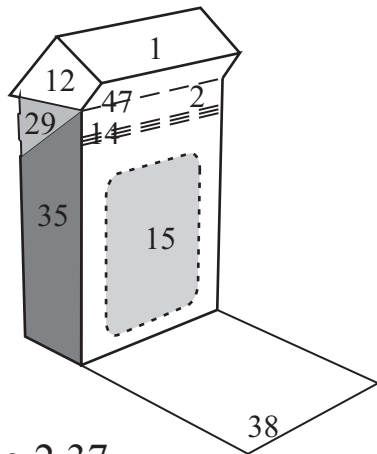


Fig. 2,37

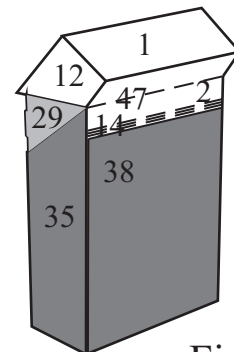


Fig. 2,38

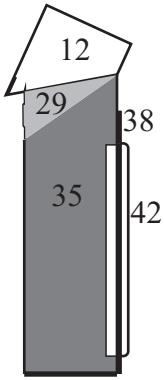


Fig. 2,39

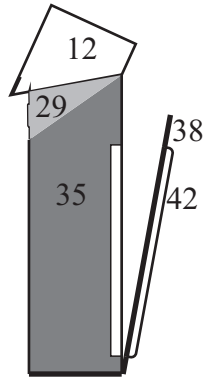


Fig. 2,40

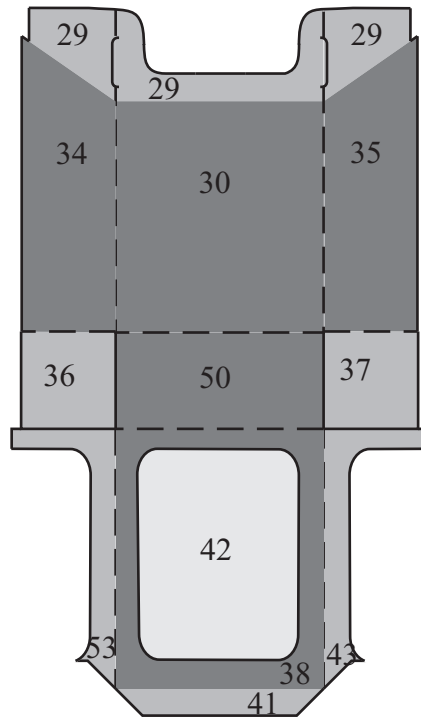


Fig. 2,41

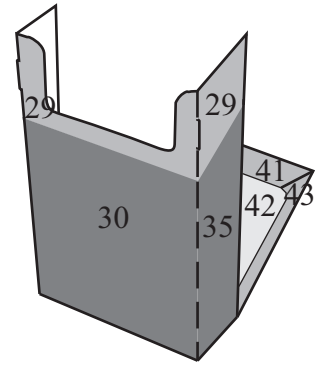


Fig. 2,42

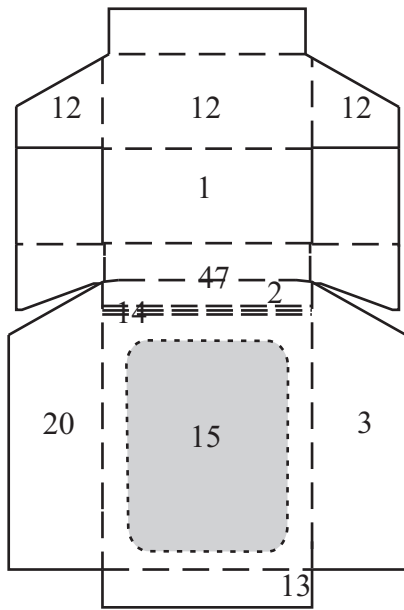


Fig. 2,35

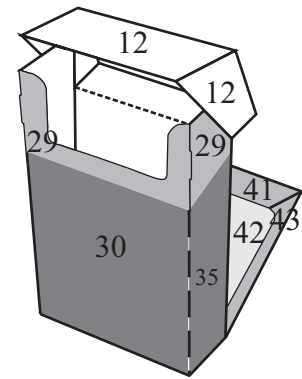


Fig. 2,43

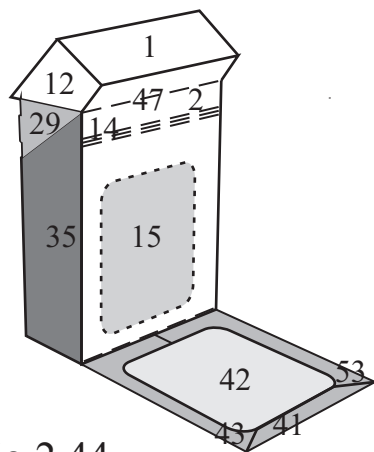


Fig. 2,44

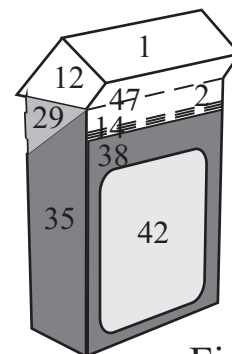


Fig. 2,45

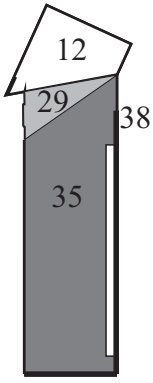


Fig. 2,46

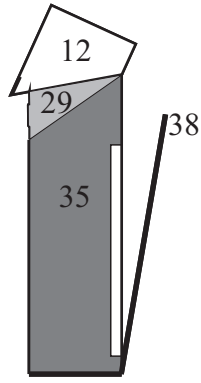


Fig. 2,47



Fig. 2,48

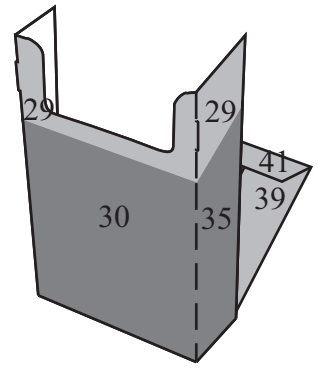


Fig. 2,49

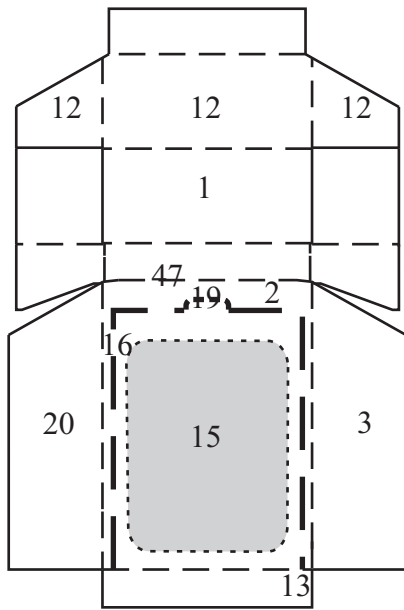


Fig. 2,50

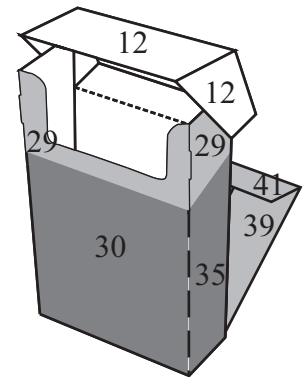


Fig. 2,51

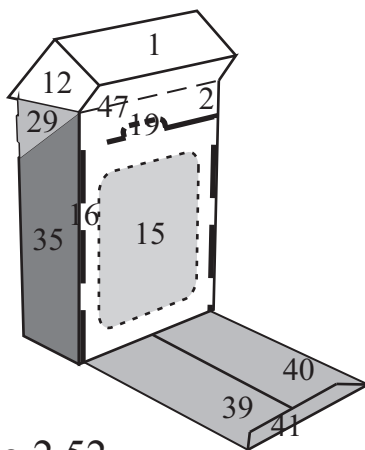


Fig. 2,52

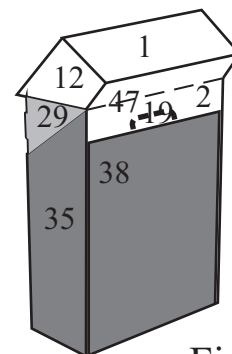


Fig. 2,53

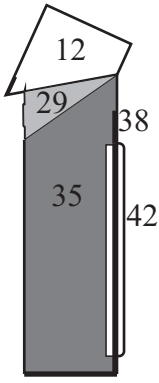


Fig. 2,54

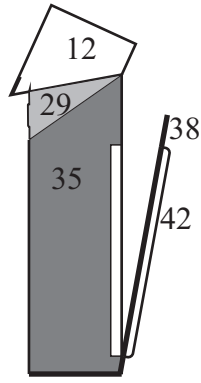


Fig. 2,55

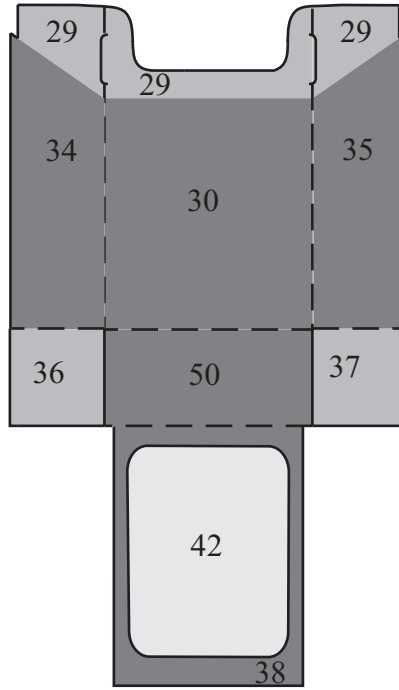


Fig. 2,56

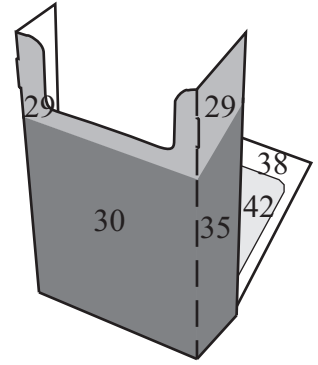


Fig. 2,57

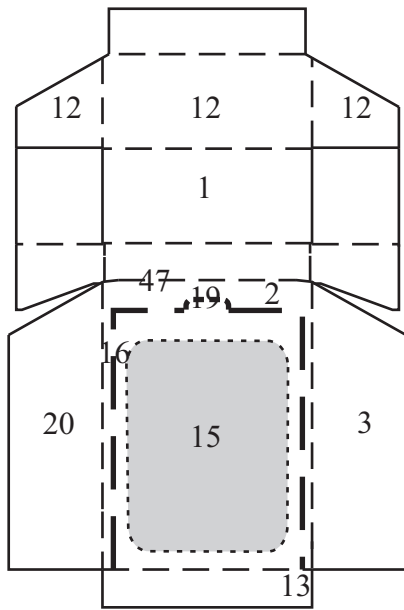


Fig. 2,50

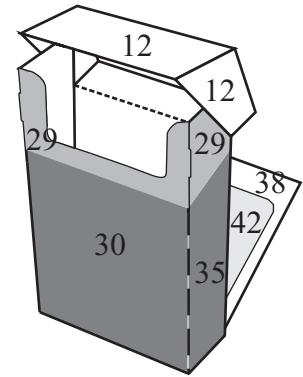


Fig. 2,58

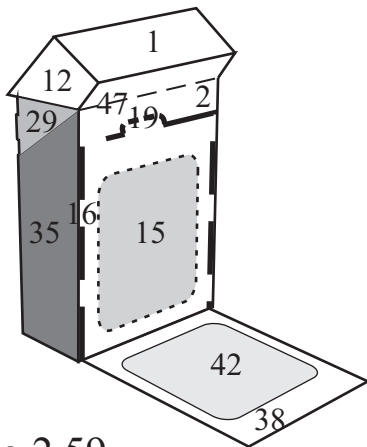


Fig. 2,59

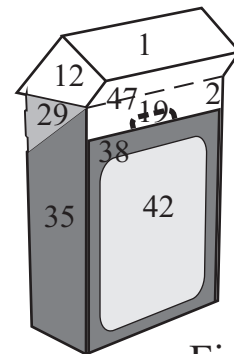


Fig. 2,60

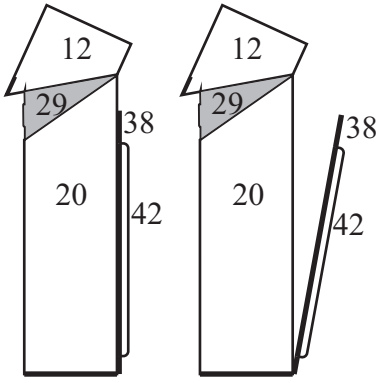


Fig. 2,61

Fig. 2,62

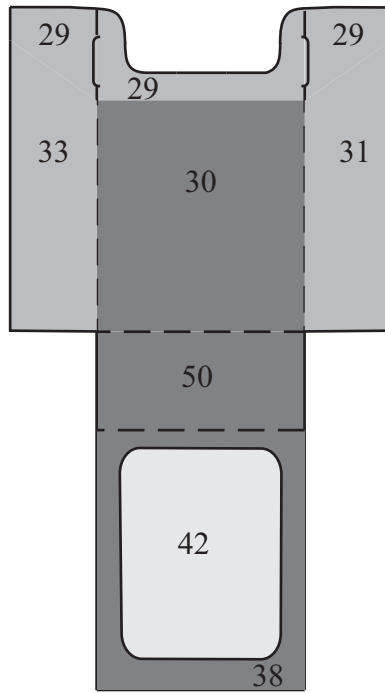


Fig. 2,63

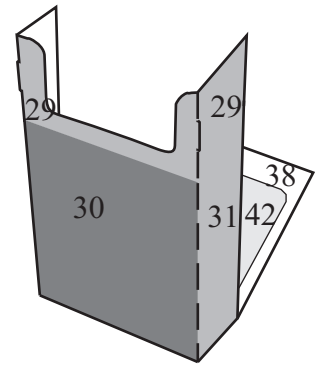


Fig. 2,64

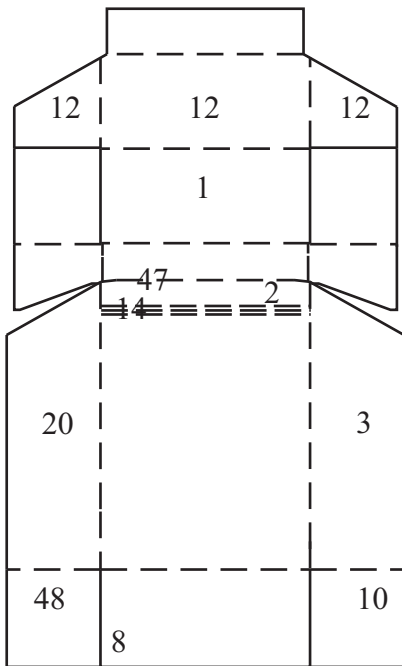


Fig. 2,65

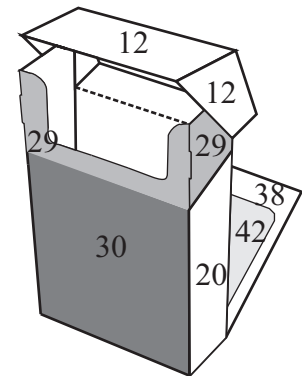


Fig. 2,66

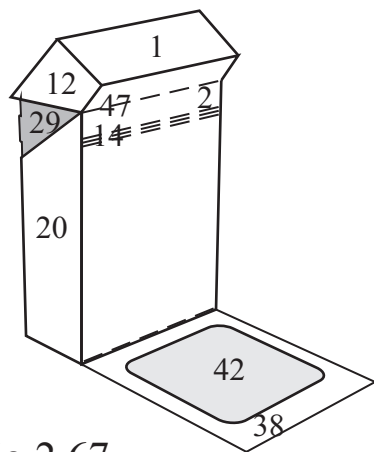


Fig. 2,67

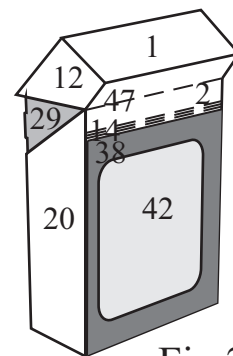


Fig. 2,68

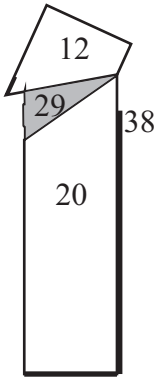


Fig. 2,69

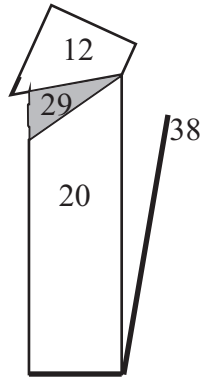


Fig. 2,70

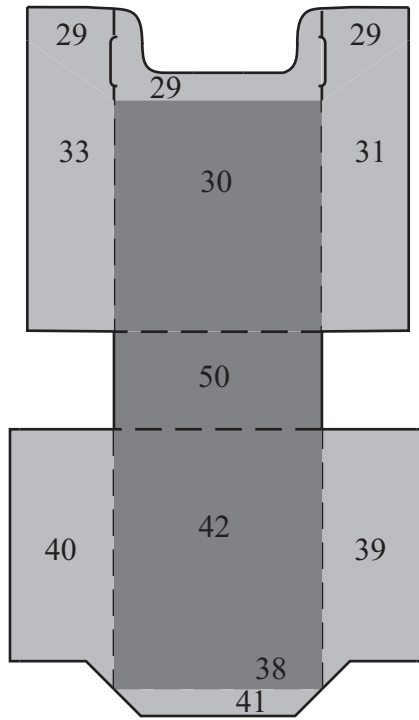


Fig. 2,71

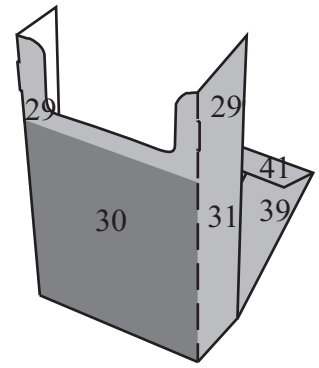


Fig. 2,72

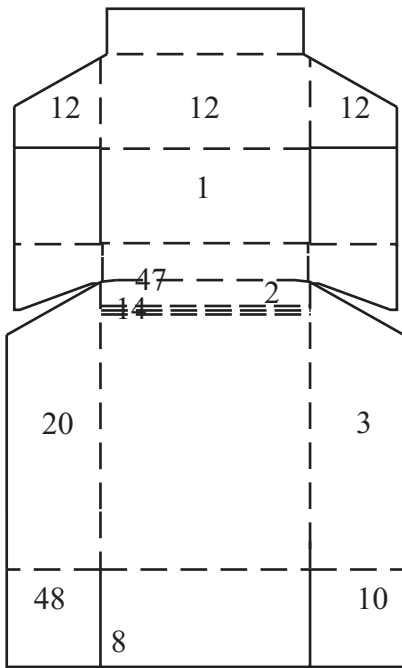


Fig. 2,65

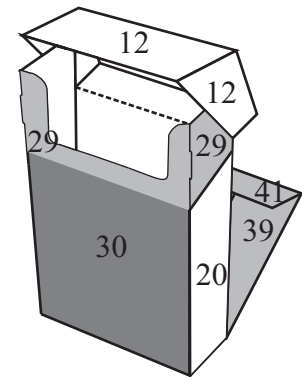


Fig. 2,73

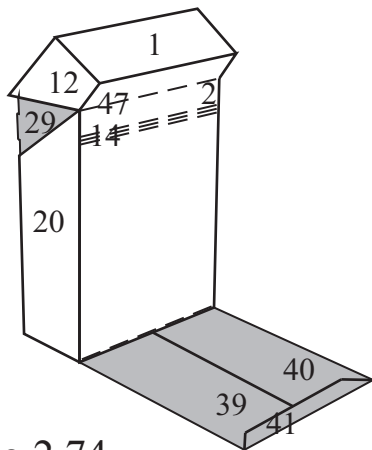


Fig. 2,74

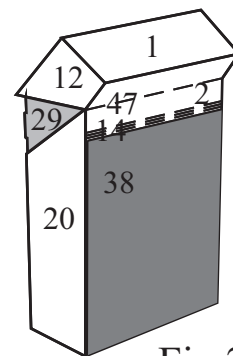


Fig. 2,75

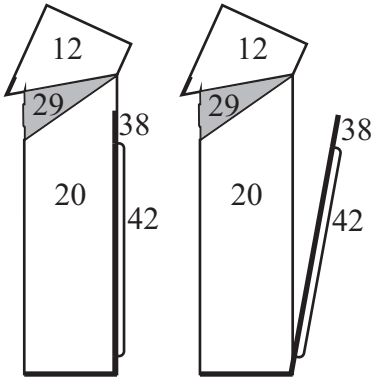


Fig. 2,76

Fig. 2,77

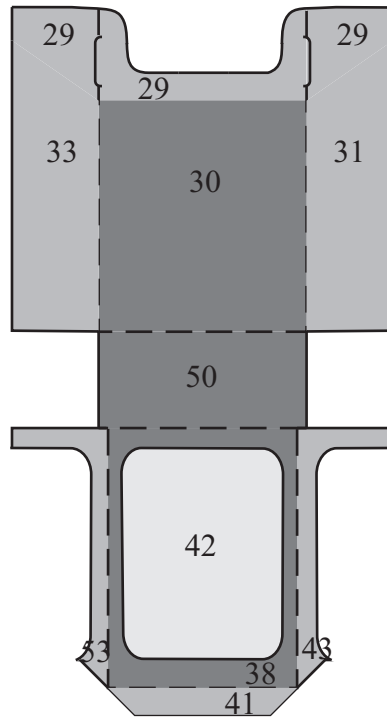


Fig. 2,78

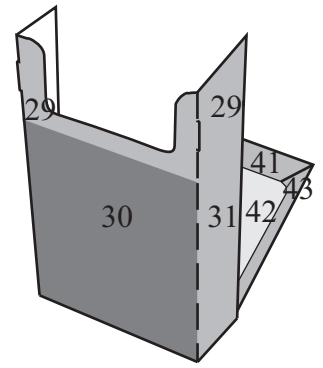


Fig. 2,79

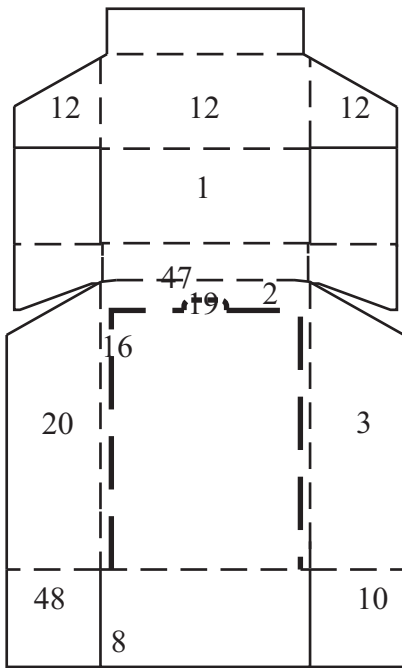


Fig. 2,80

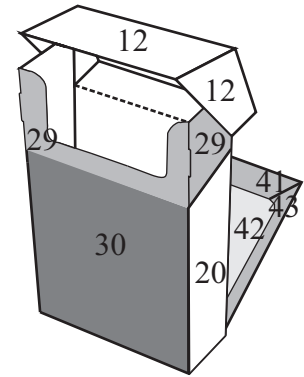


Fig. 2,81

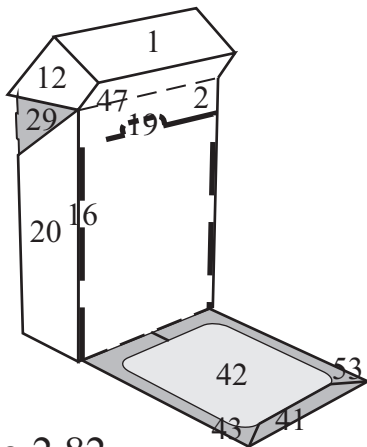


Fig. 2,82

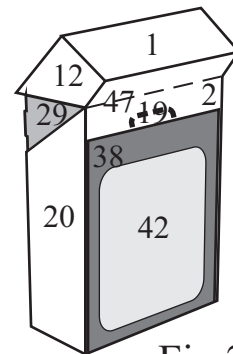


Fig. 2,83

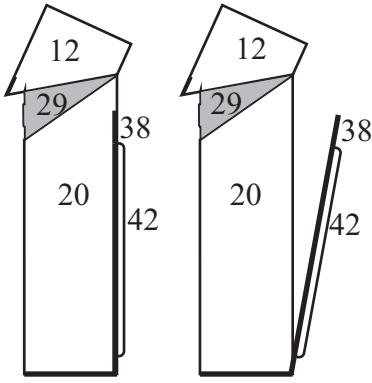


Fig. 2,84

Fig. 2,85

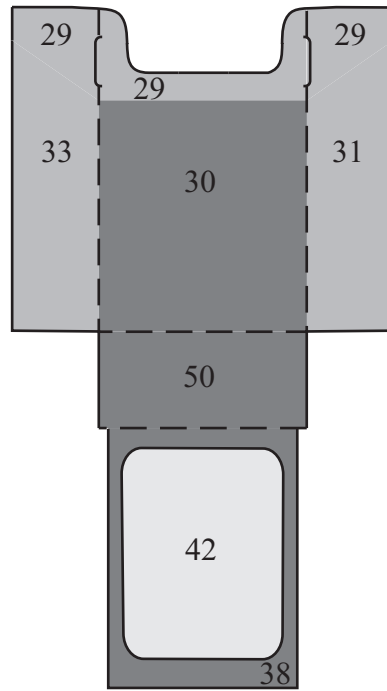


Fig. 2,86

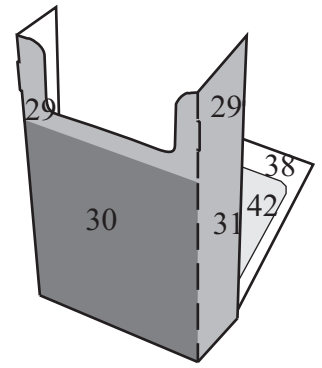


Fig. 2,87

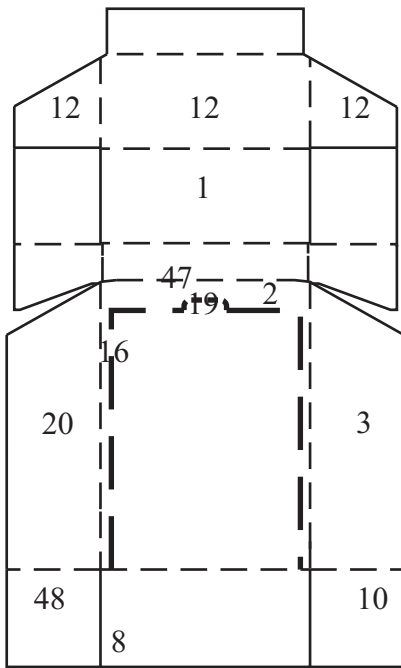


Fig. 2,80

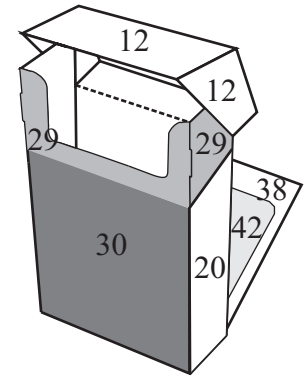


Fig. 2,88

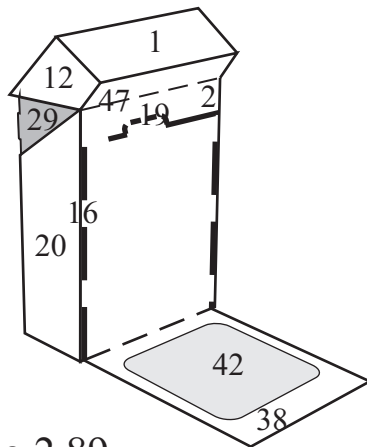


Fig. 2,89

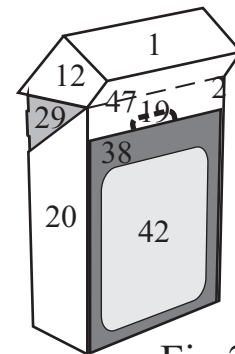


Fig. 2,90

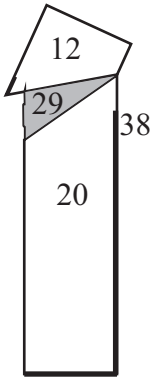


Fig. 2,91

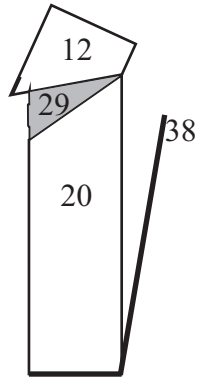


Fig. 2,92

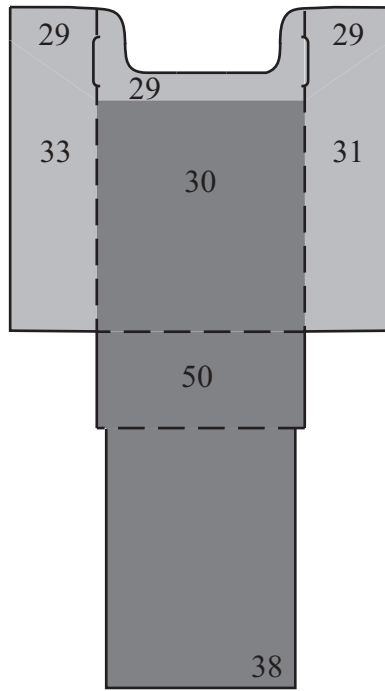


Fig. 2,93

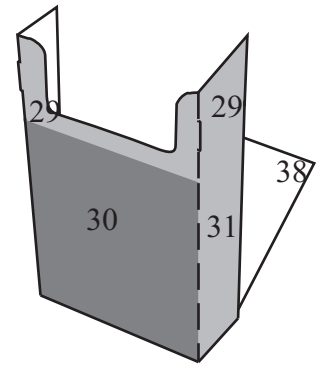


Fig. 2,94

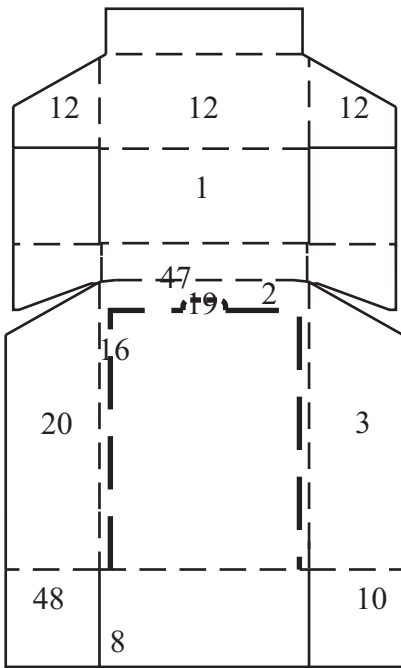


Fig. 2,80

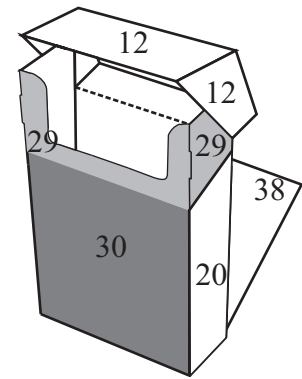


Fig. 2,95

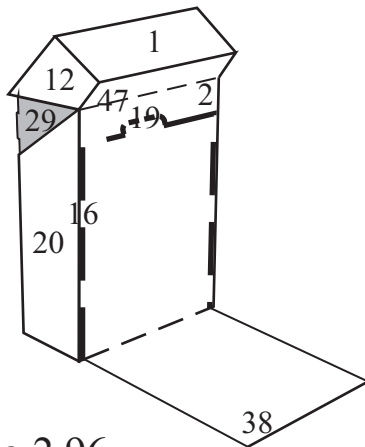


Fig. 2,96

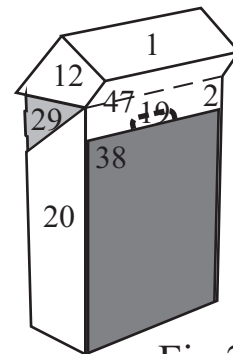


Fig. 2,97

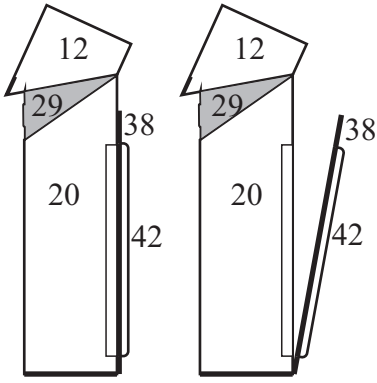


Fig. 2,98

Fig. 2,99

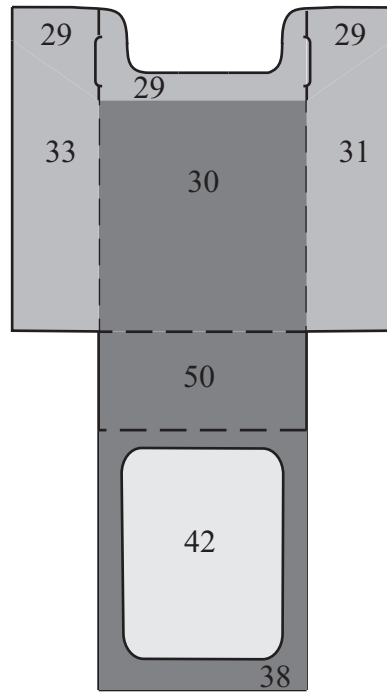


Fig. 2,100

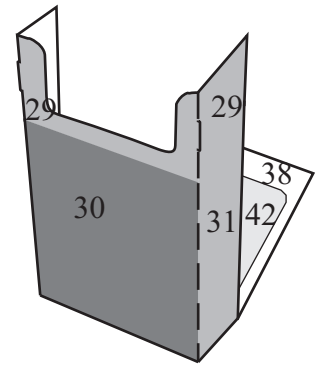


Fig. 2,101

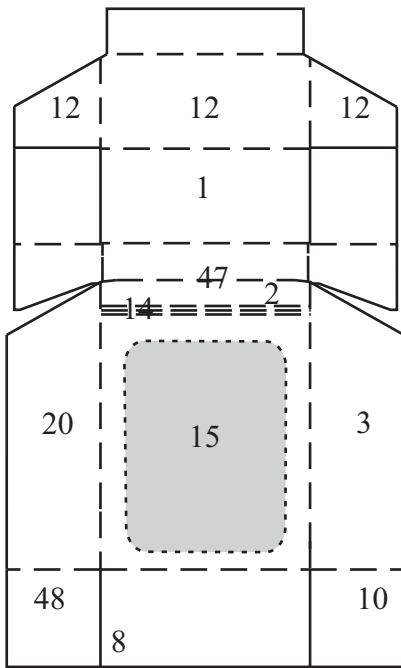


Fig. 2,102

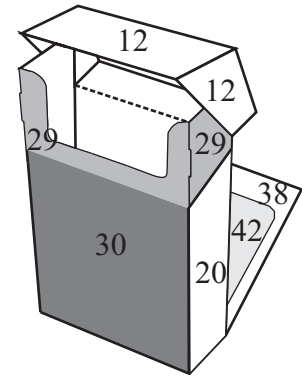


Fig. 2,103

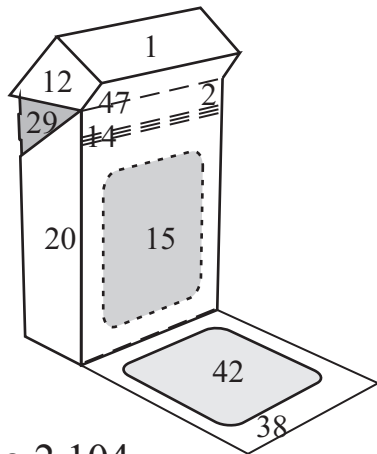


Fig. 2,104

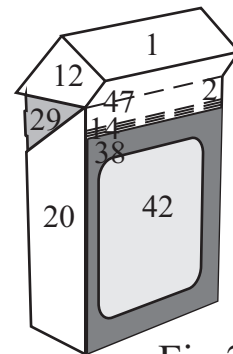


Fig. 2,105

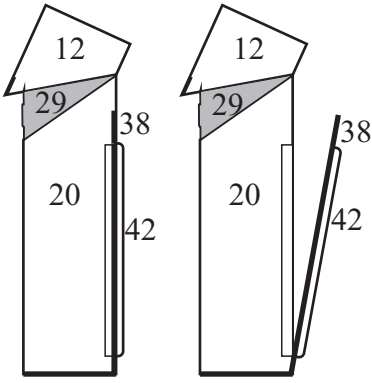


Fig. 2,106 Fig. 2,107

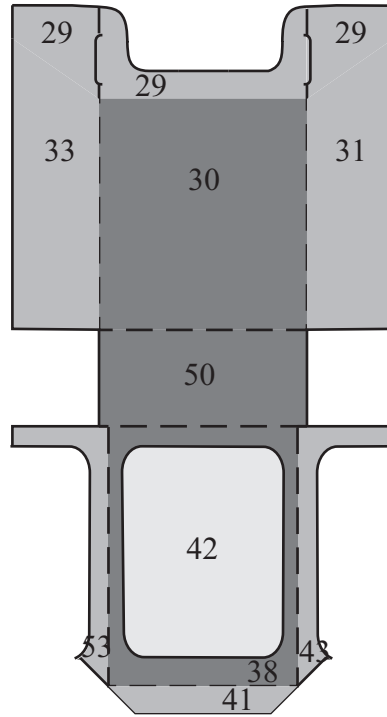


Fig. 2,108

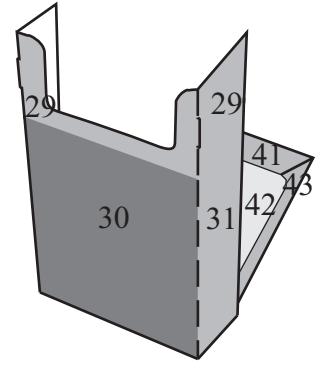


Fig. 2,109

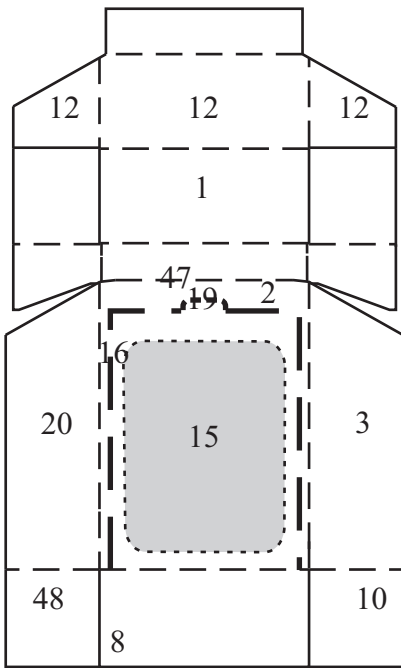


Fig. 2,110

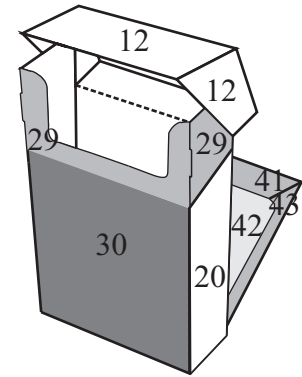


Fig. 2,111

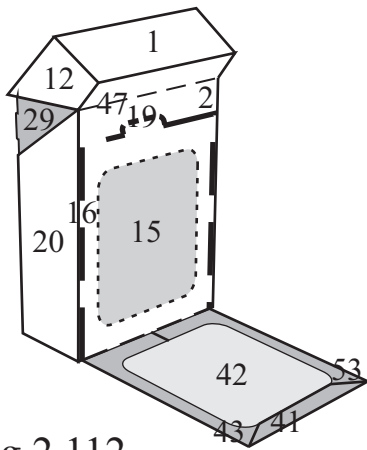


Fig. 2,112

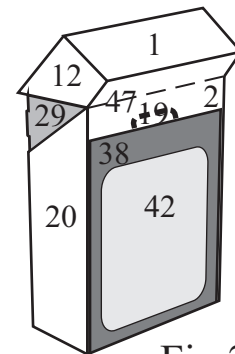


Fig. 2,113

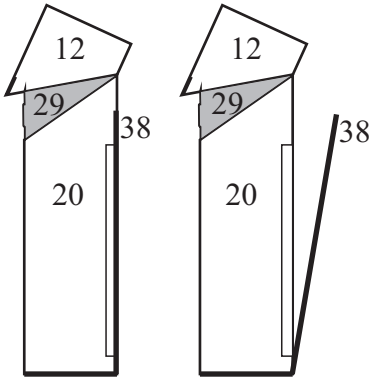


Fig. 2,114 Fig. 2,115

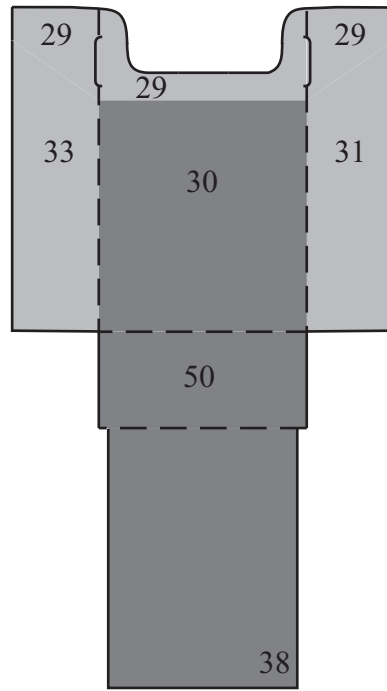


Fig. 2,116

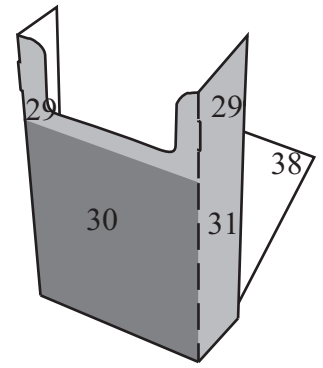


Fig. 2,117

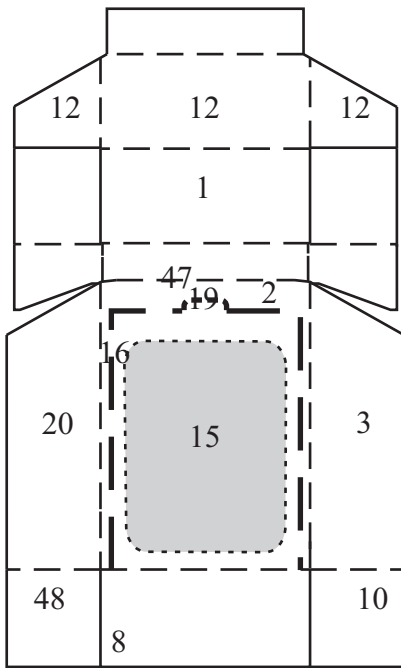


Fig. 2,110

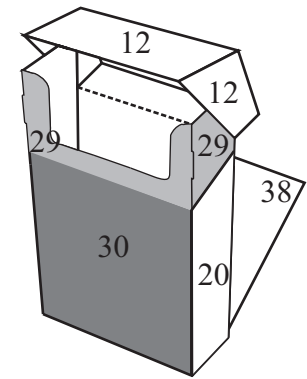


Fig. 2,118

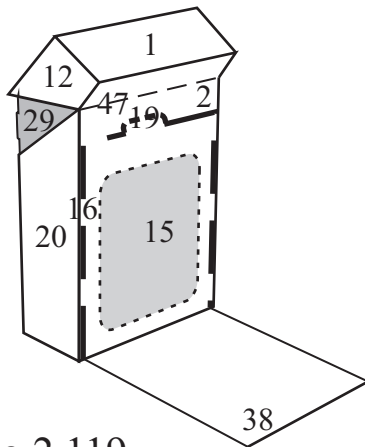


Fig. 2,119

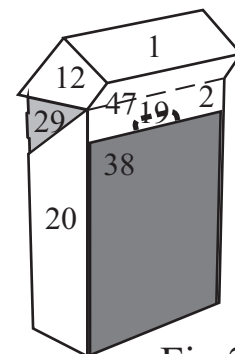


Fig. 2,120

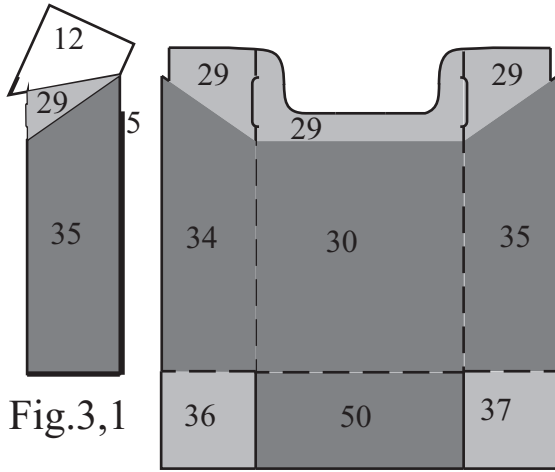


Fig.3,1

Fig.3,3

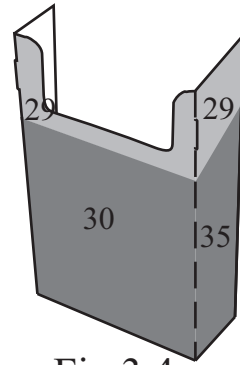


Fig.3,4

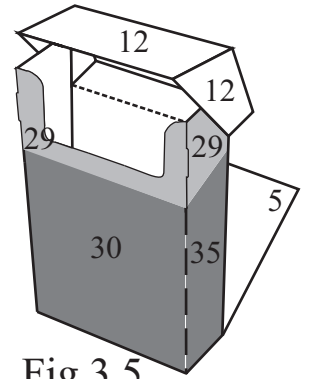


Fig.3,5

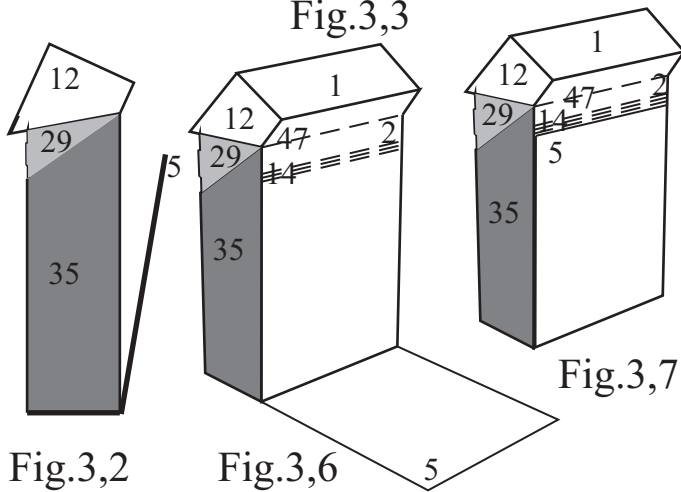


Fig.3,2

Fig.3,6

Fig.3,7

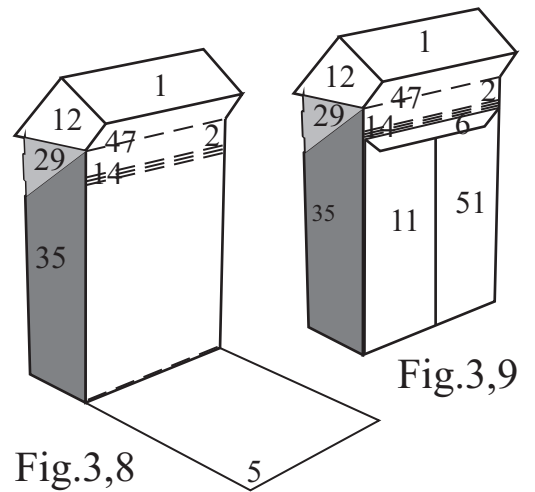


Fig.3,8

Fig.3,9

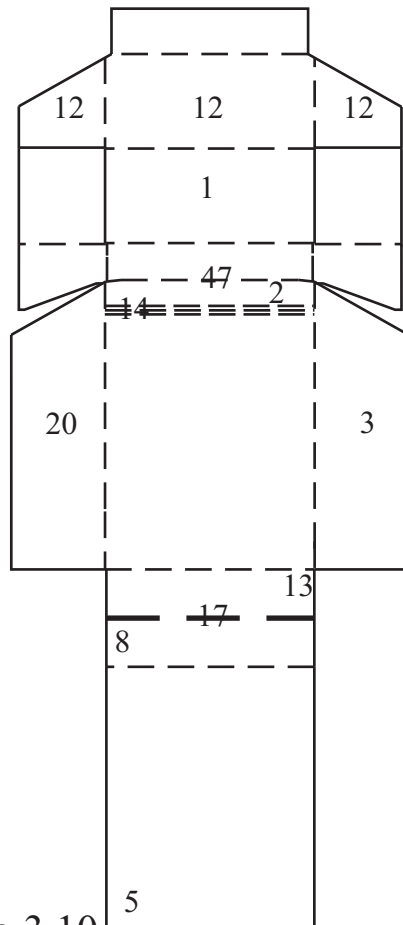


Fig.3,10

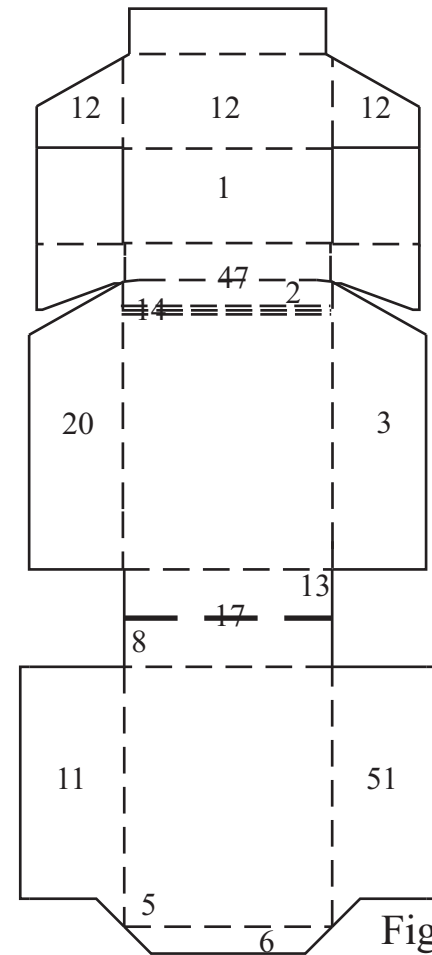


Fig.3,11

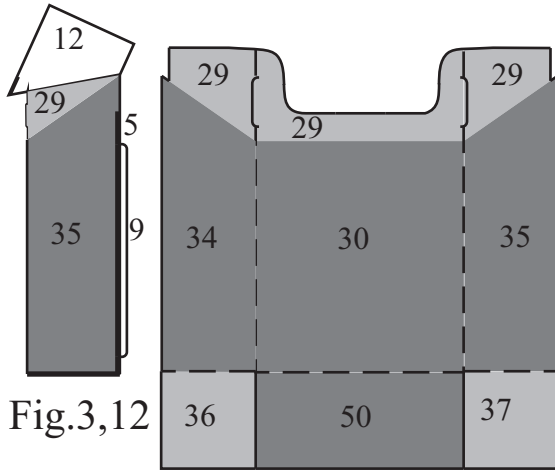


Fig.3,12

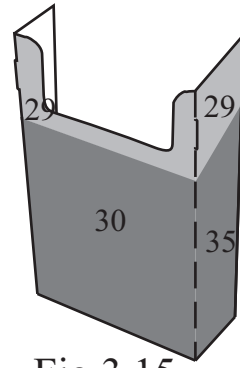


Fig.3,15

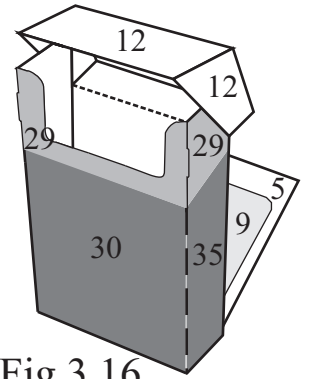


Fig.3,16

Fig.3,14

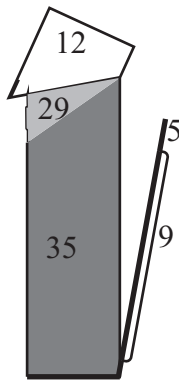


Fig.3,13

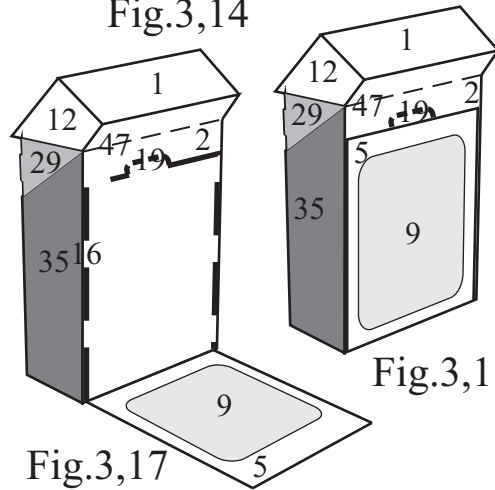


Fig.3,17

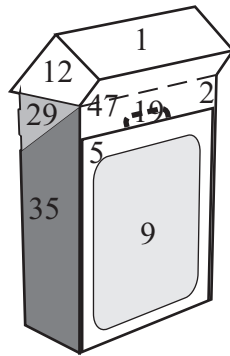


Fig.3,18

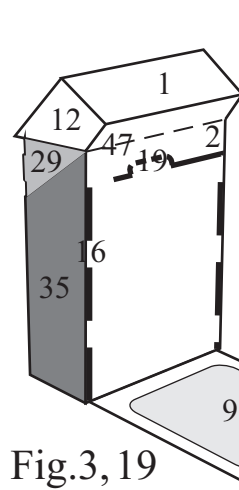


Fig.3,19

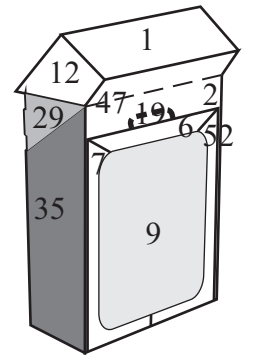


Fig.3,20

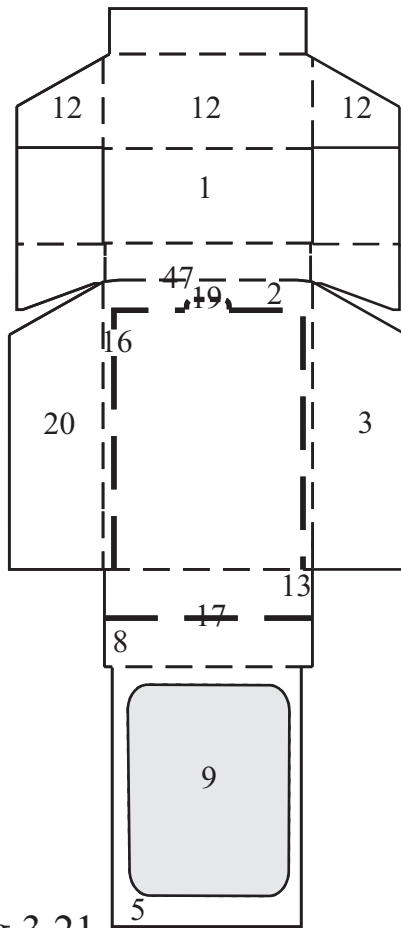


Fig.3,21

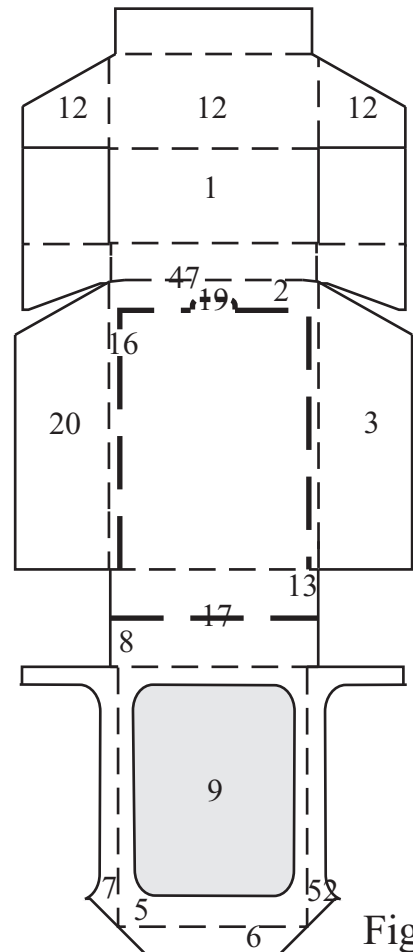


Fig.3,22

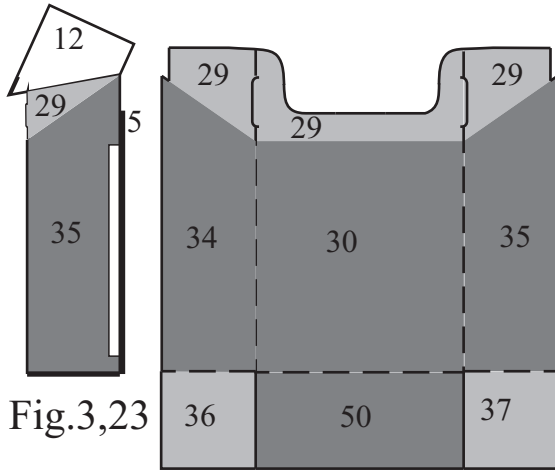


Fig.3,23

Fig.3,25

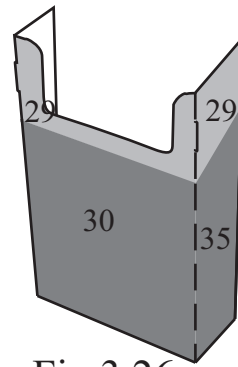


Fig.3,26

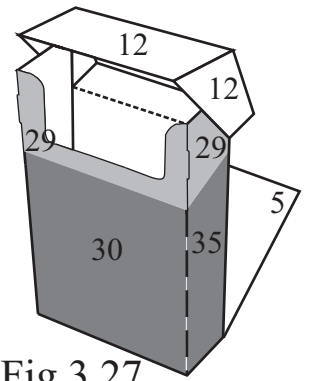


Fig.3,27

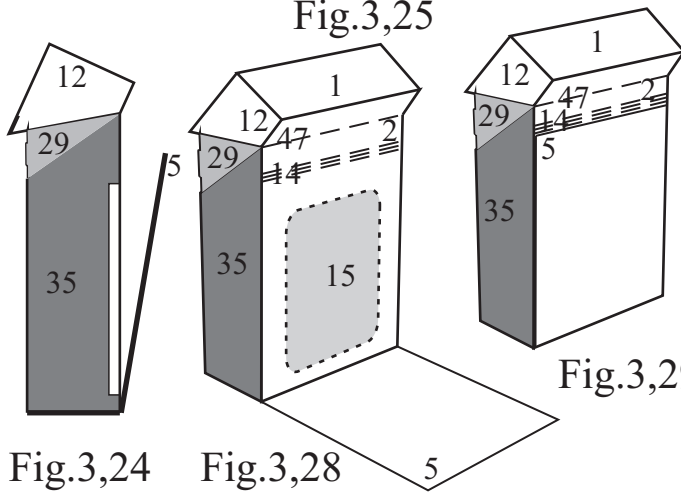


Fig.3,24

Fig.3,28

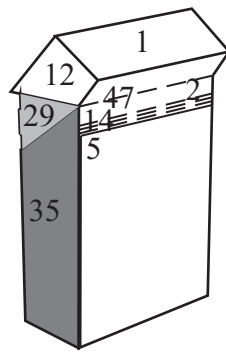


Fig.3,29

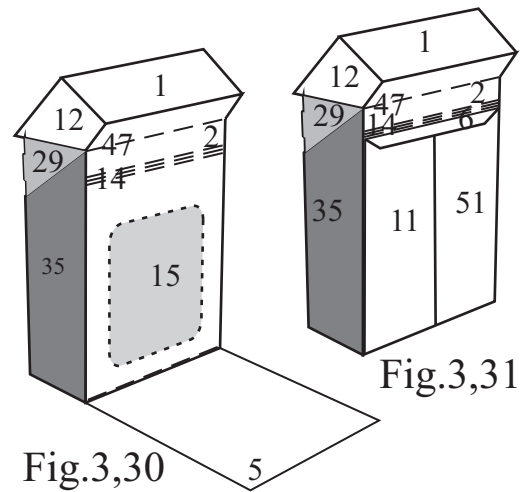


Fig.3,30

Fig.3,31

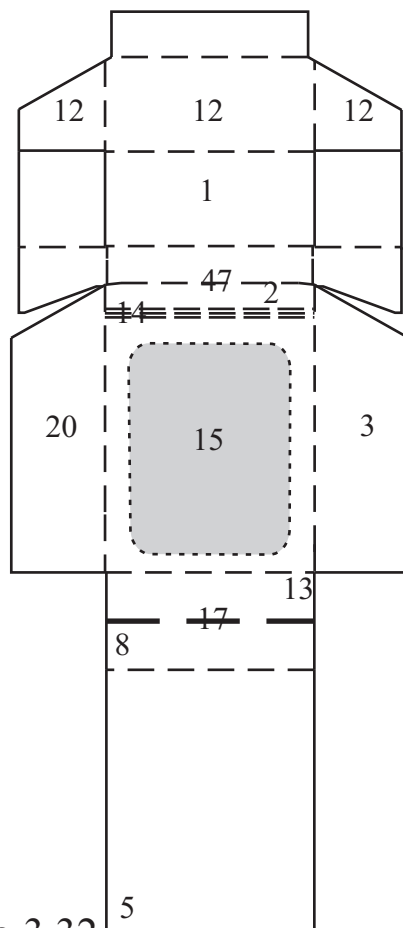


Fig.3,32

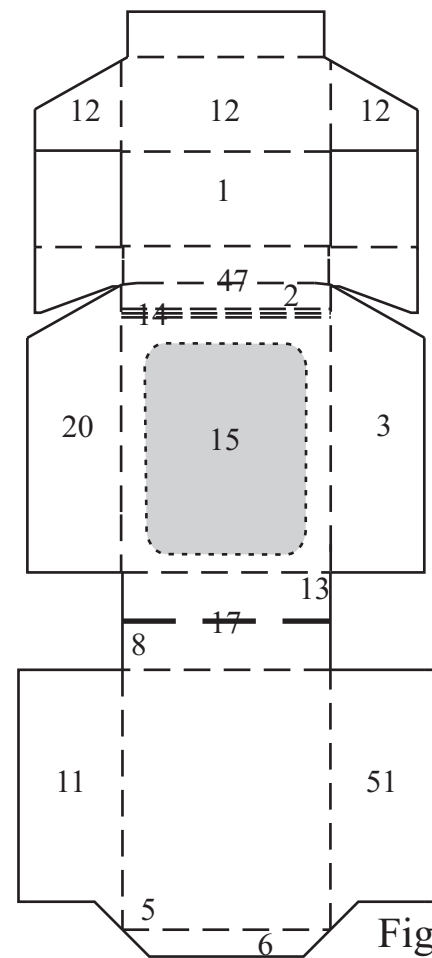


Fig.3,33

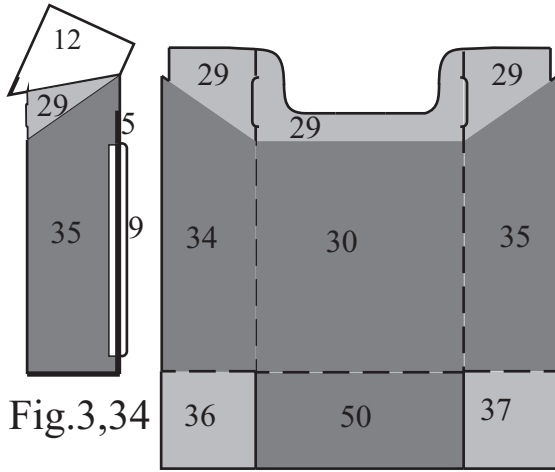


Fig.3,34

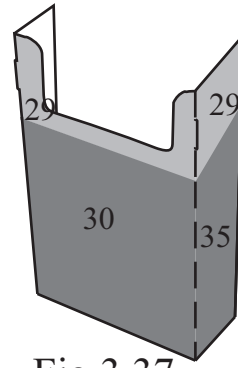


Fig.3,37

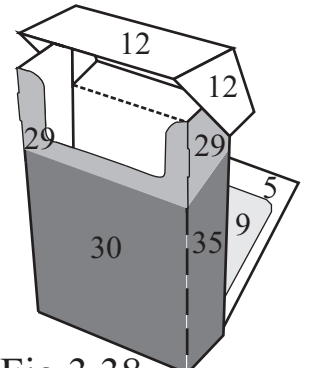


Fig.3,38

Fig.3,36

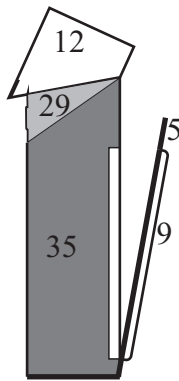


Fig.3,35

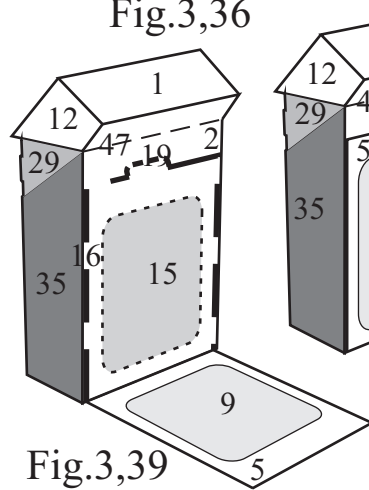


Fig.3,39

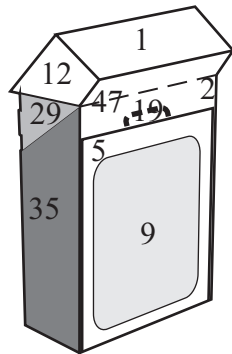


Fig.3,40

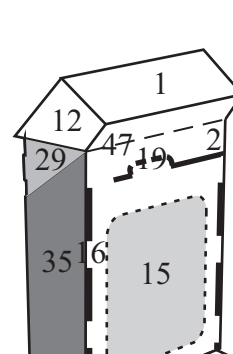


Fig.3,41

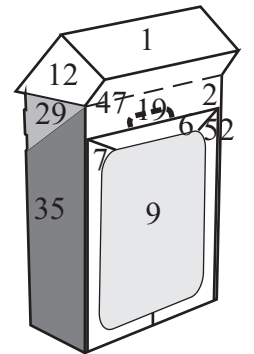


Fig.3,42

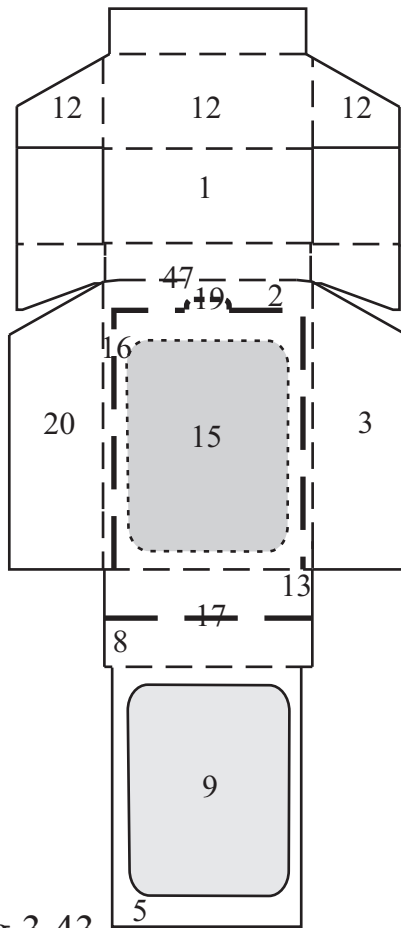


Fig.3,43

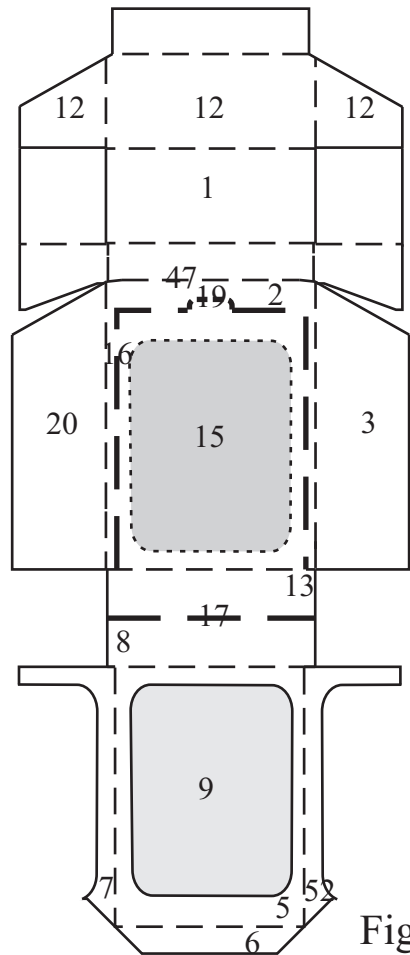


Fig.3,44

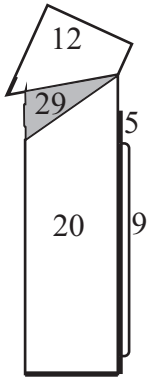


Fig.3,45

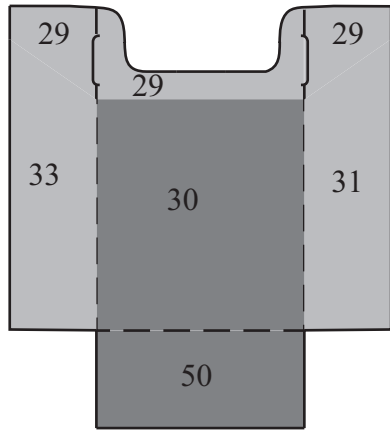


Fig.3,47

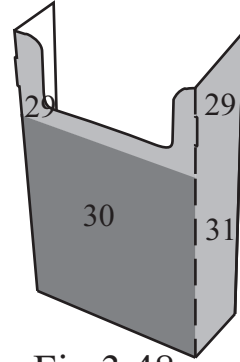


Fig.3,48

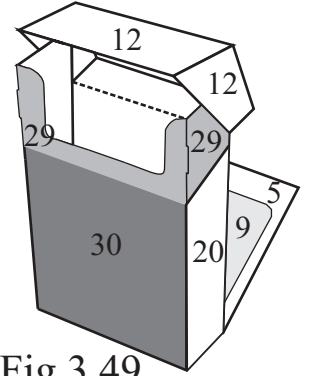


Fig.3,49

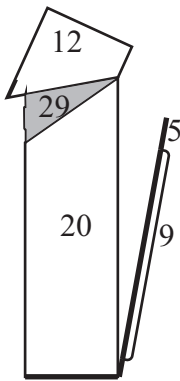


Fig.3,46

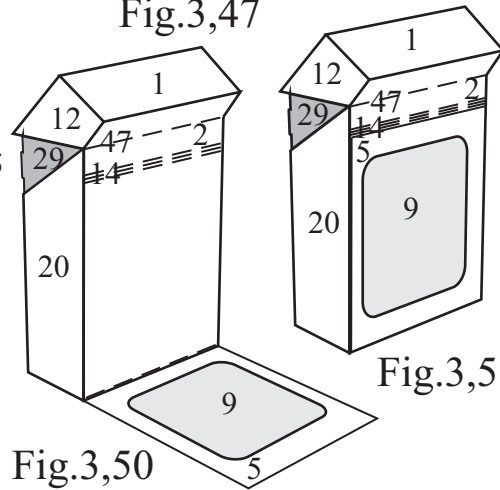


Fig.3,50

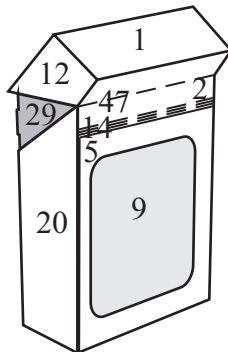


Fig.3,51

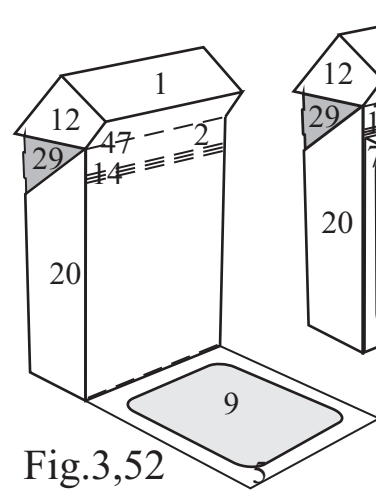


Fig.3,52

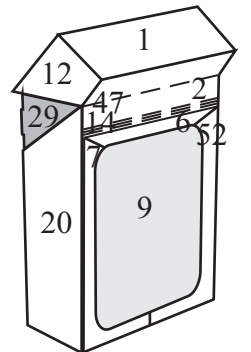


Fig.3,53

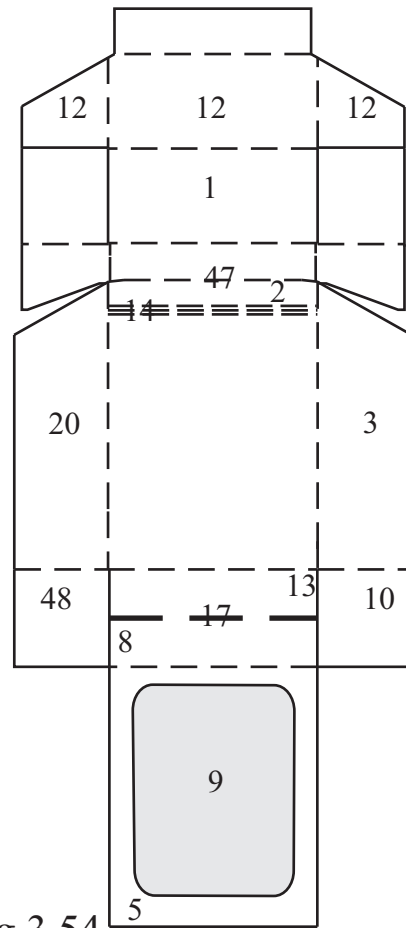


Fig.3,54

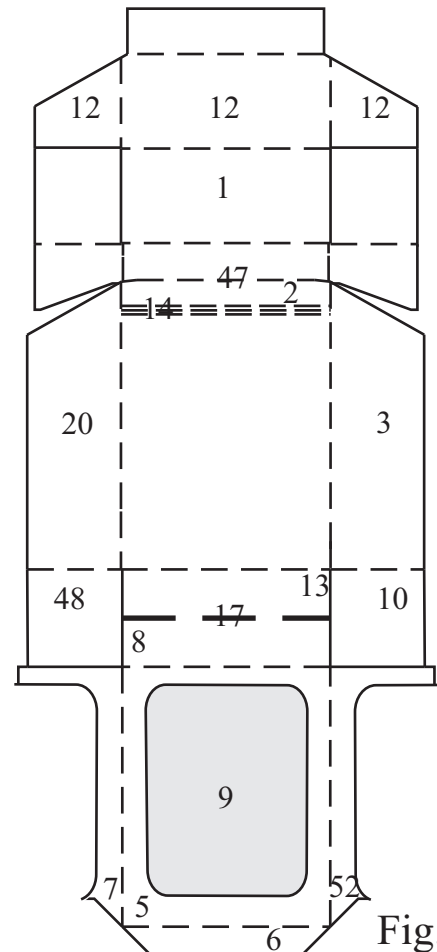


Fig.3,55

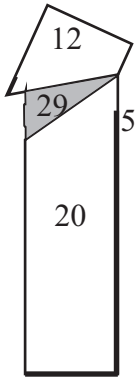


Fig.3,56

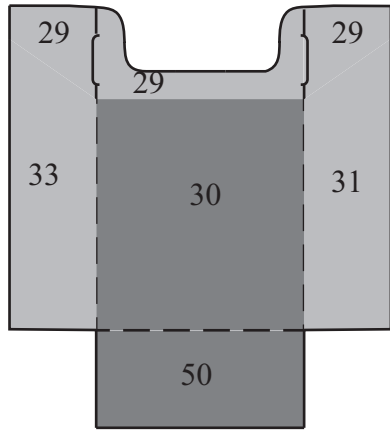


Fig.3,58

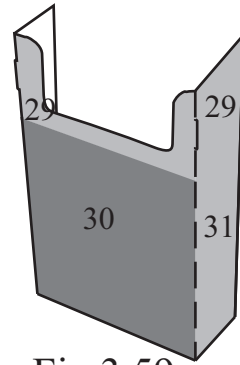


Fig.3,59

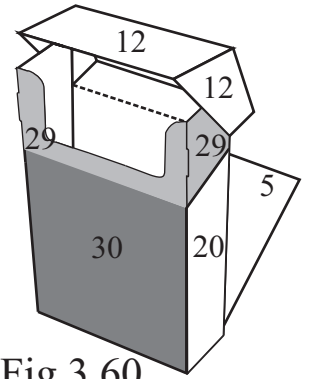


Fig.3,60

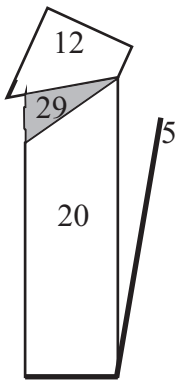


Fig.3,57

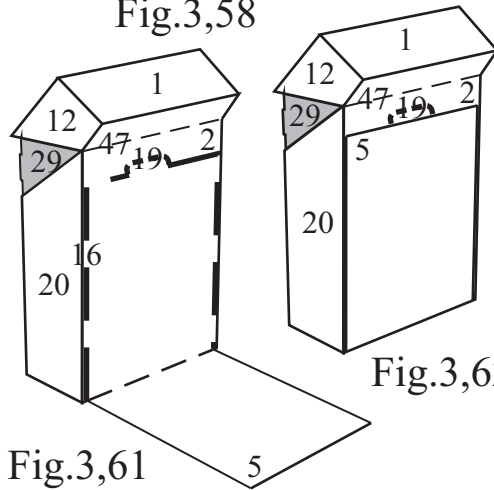


Fig.3,61

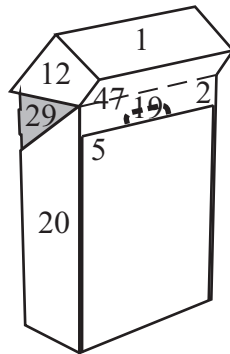


Fig.3,62

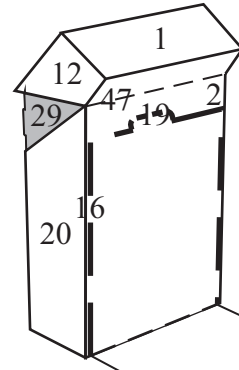


Fig.3,63

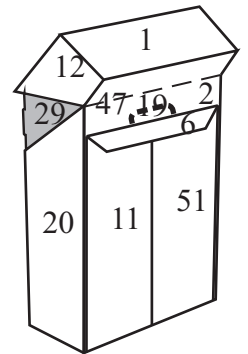


Fig.3,64

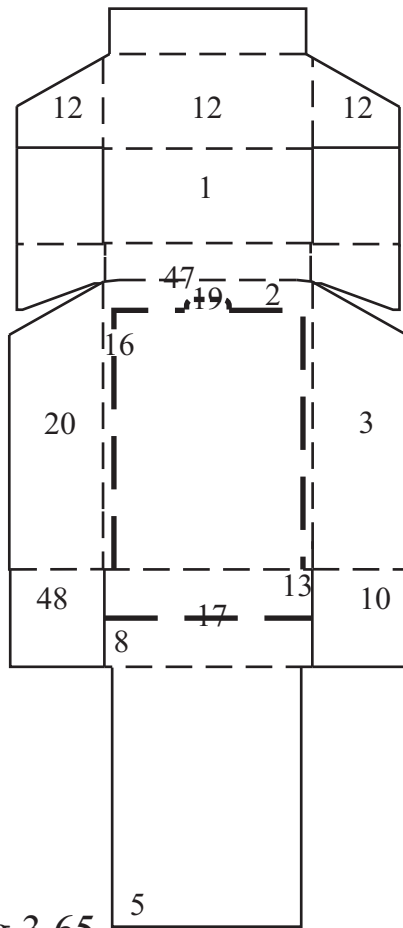


Fig.3,65

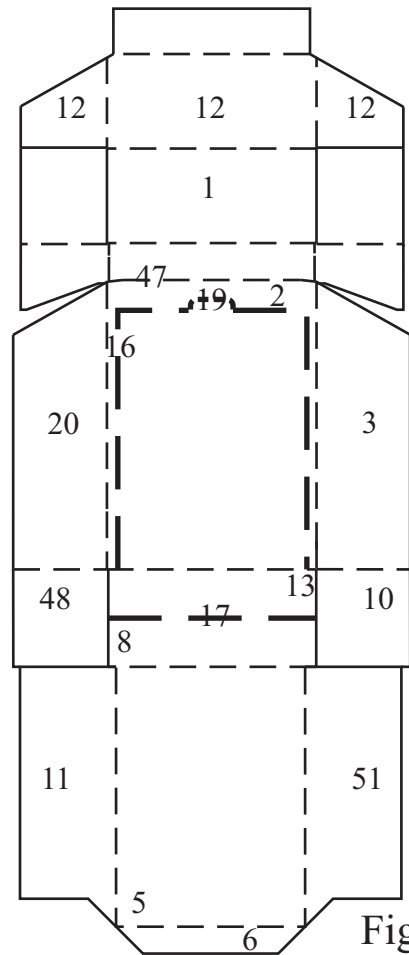


Fig.3,66

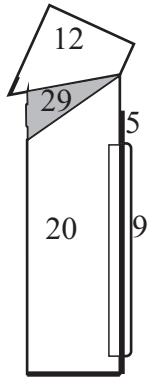


Fig.3,67

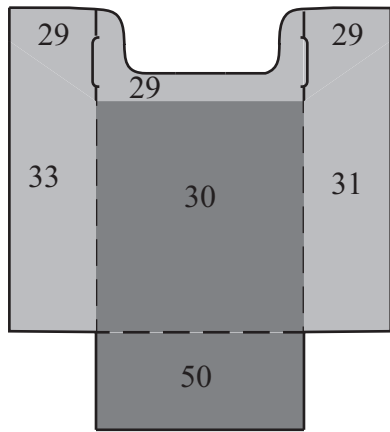


Fig.3,69

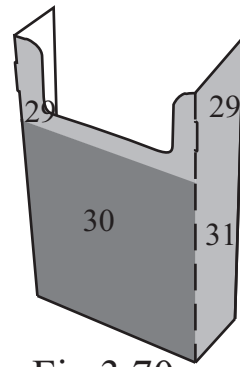


Fig.3,70

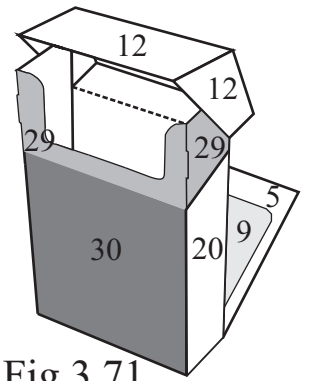


Fig.3,71

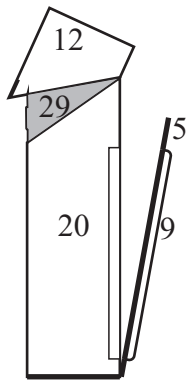


Fig.3,68

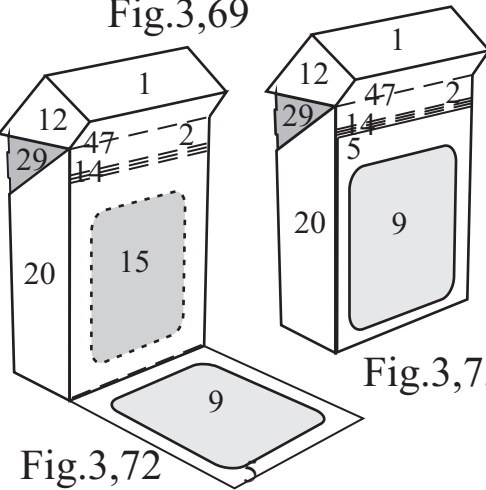


Fig.3,72

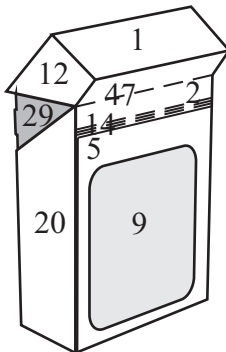


Fig.3,73

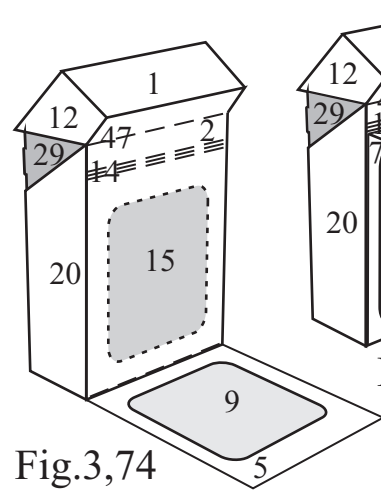


Fig.3,74

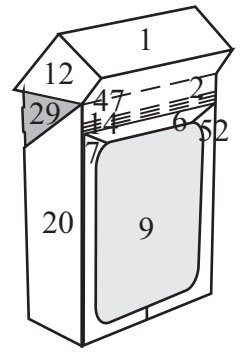


Fig.3,75

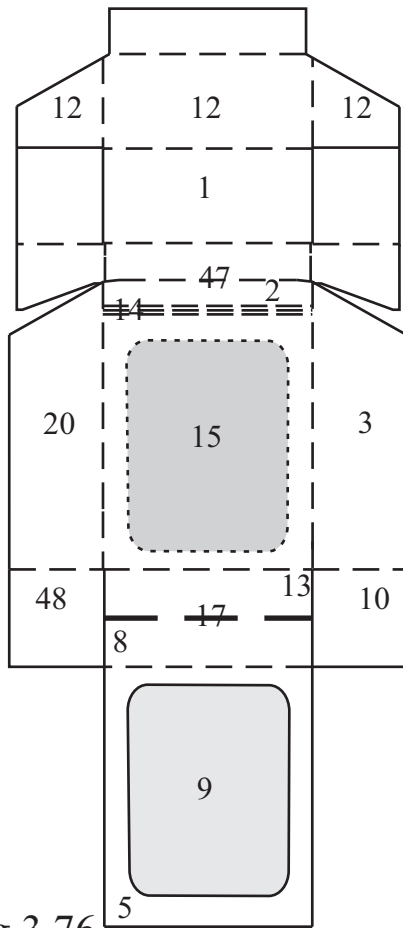


Fig.3,76

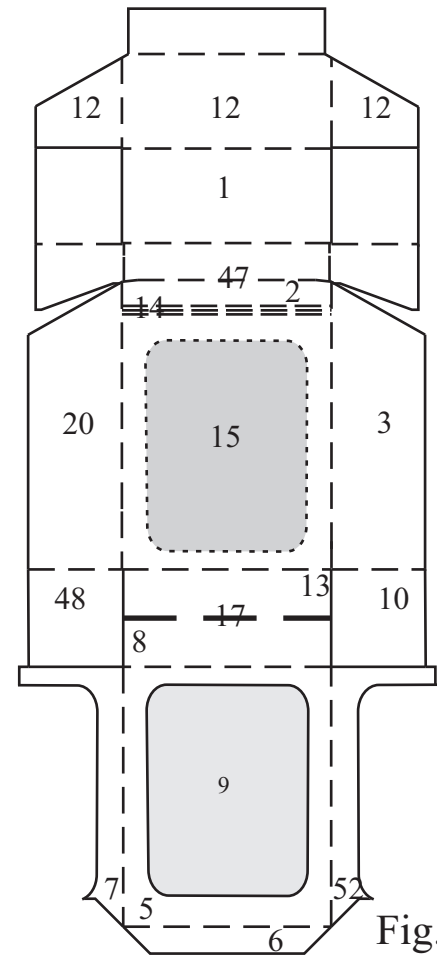


Fig.3,77

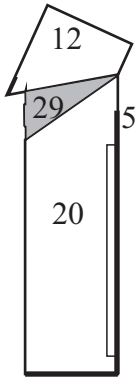


Fig.3,78

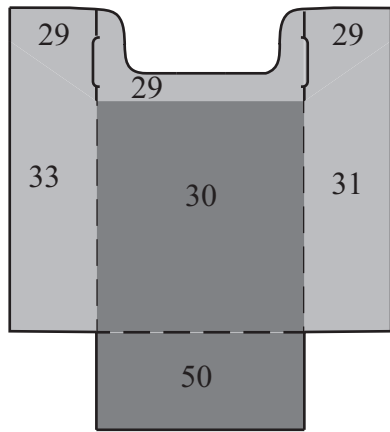


Fig.3,80

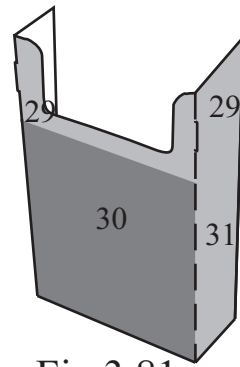


Fig.3,81

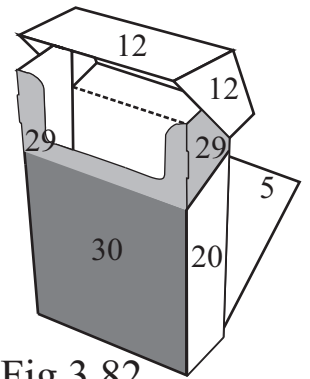


Fig.3,82

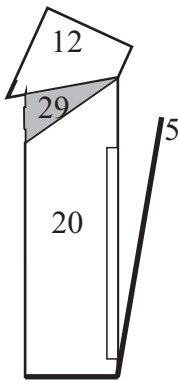


Fig.3,79

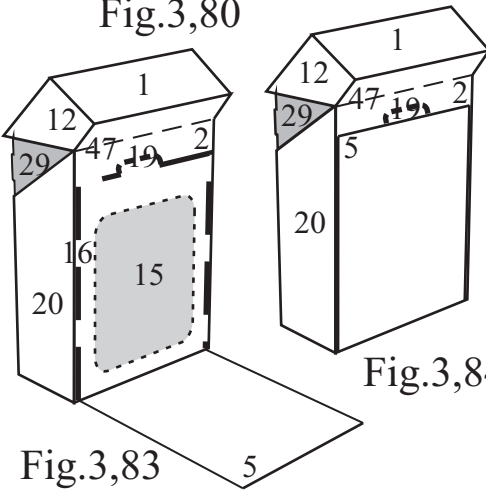


Fig.3,83

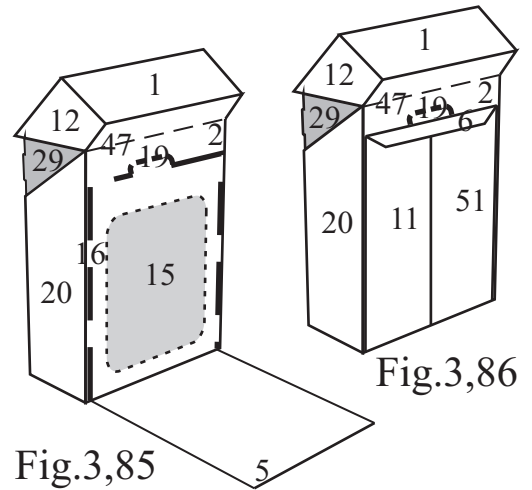


Fig.3,84

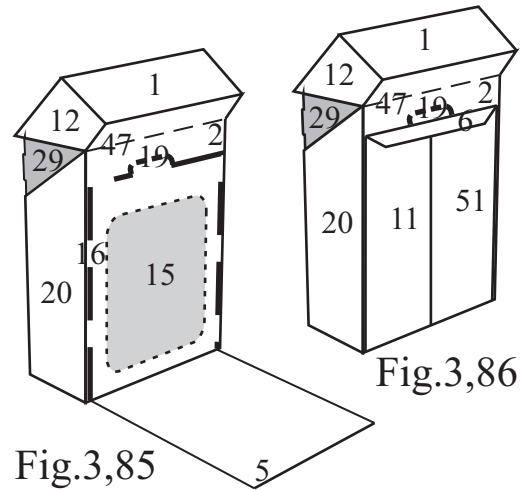


Fig.3,85

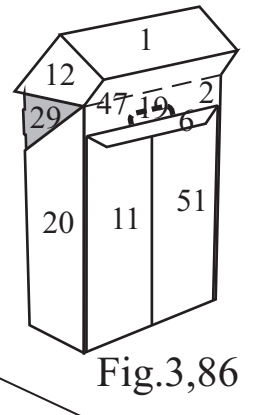


Fig.3,86

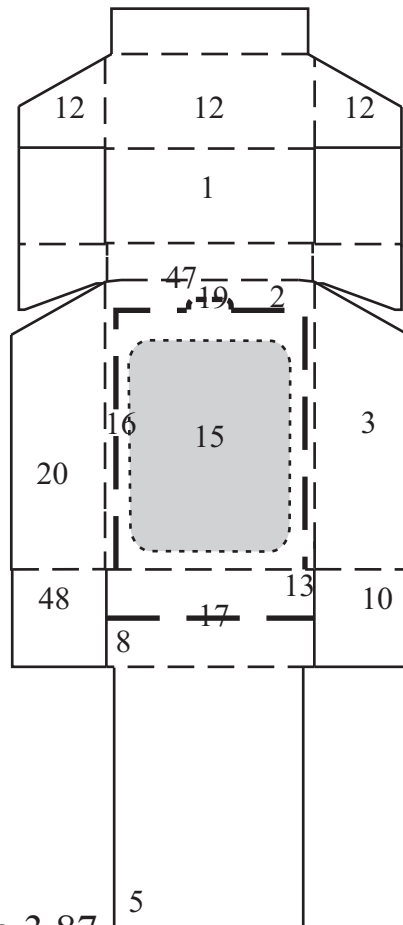


Fig.3,87

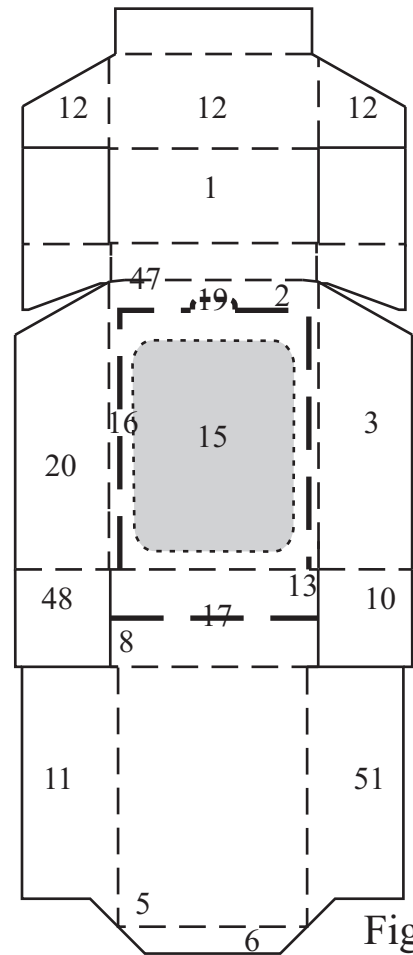


Fig.3,88

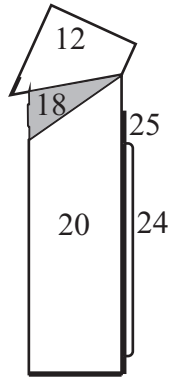


Fig. 4,1

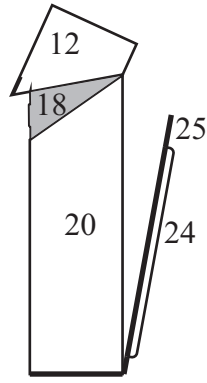


Fig. 4,2

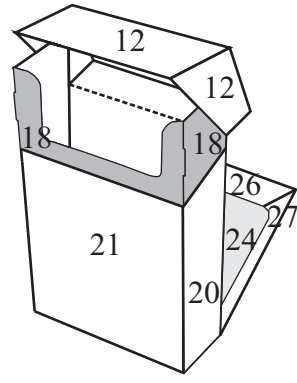


Fig. 4,3

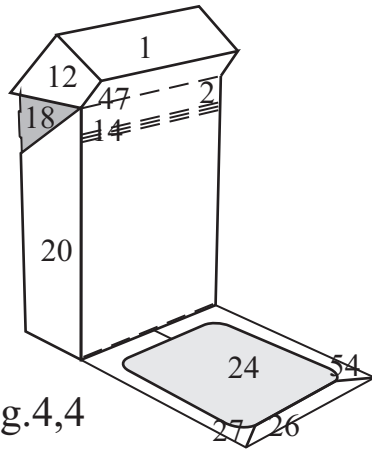


Fig. 4,4

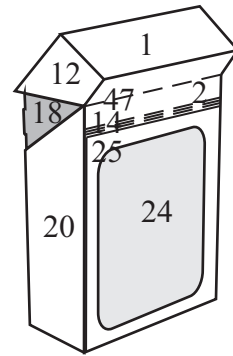


Fig. 4,5

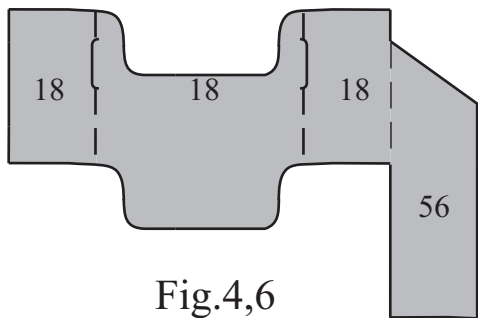


Fig. 4,6

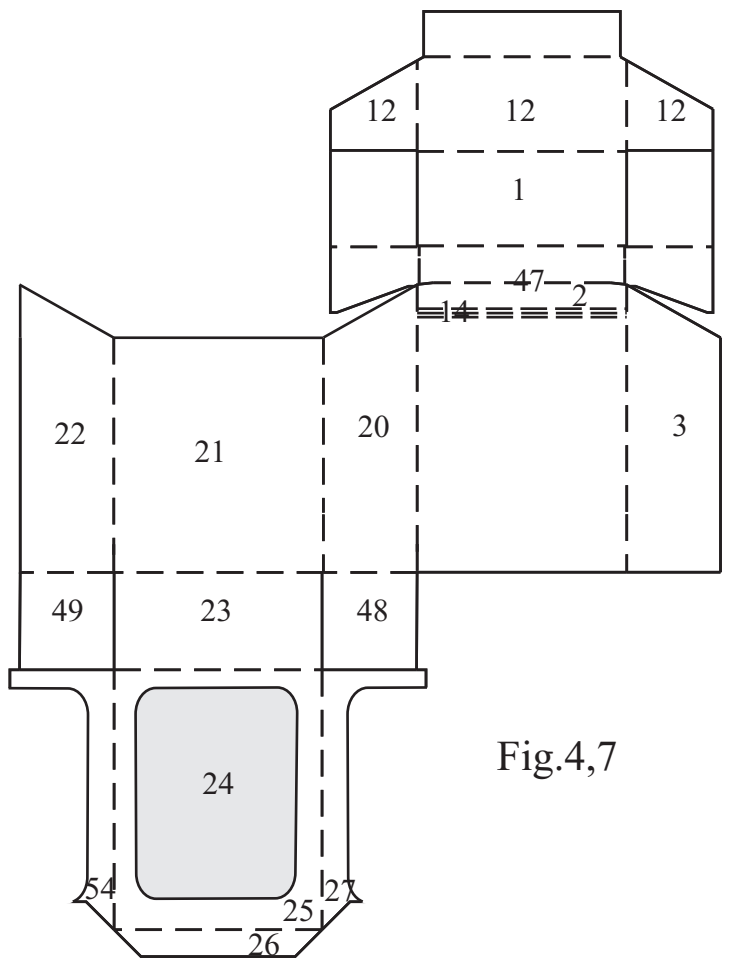


Fig. 4,7

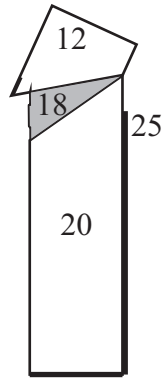


Fig. 4,8

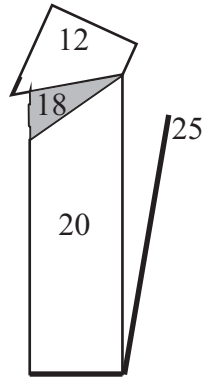


Fig. 4,9

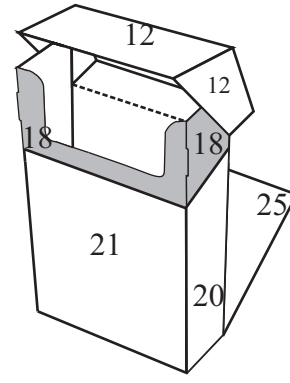


Fig. 4,10

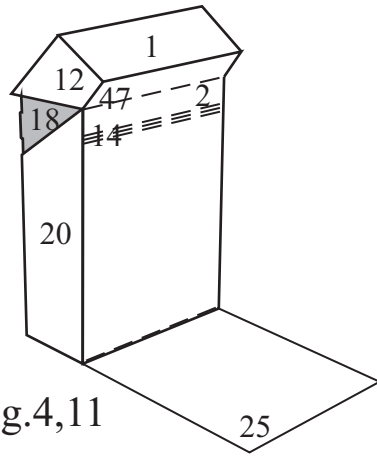


Fig. 4,11

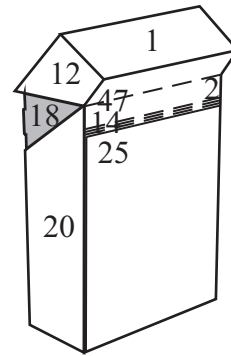


Fig. 4,12

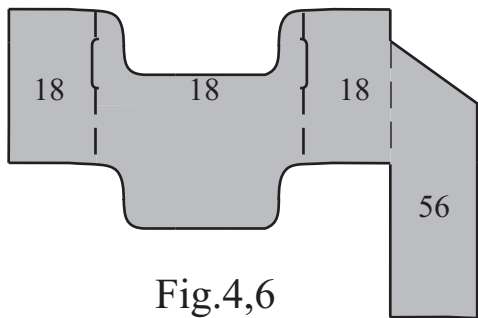


Fig. 4,6

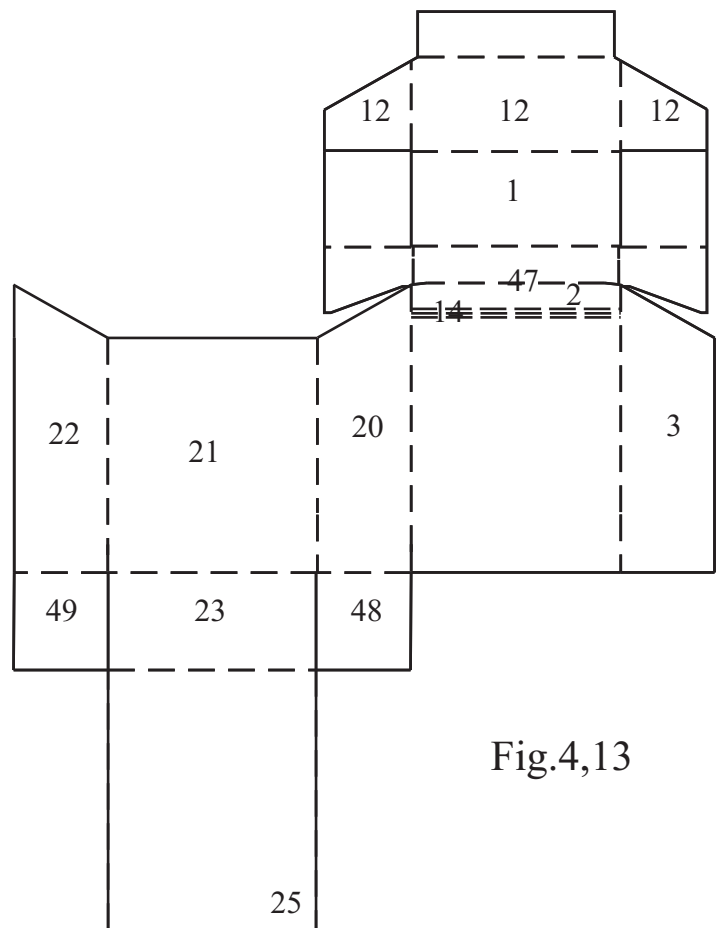


Fig. 4,13

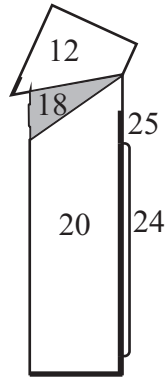


Fig. 4,14

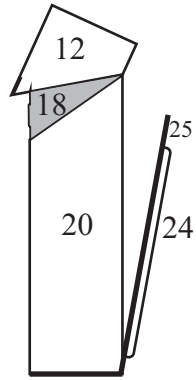


Fig. 4,15

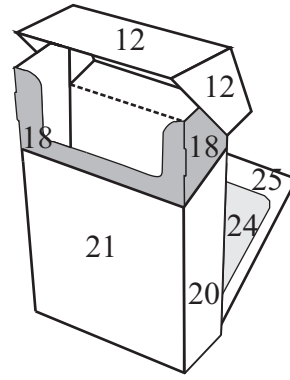


Fig. 4,16

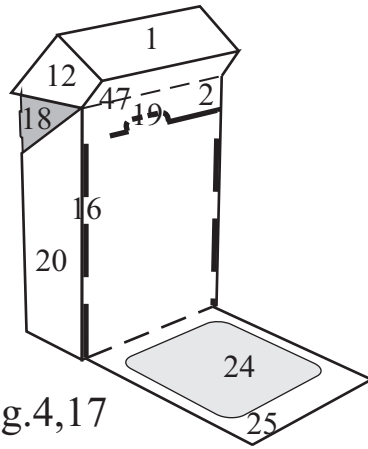


Fig. 4,17

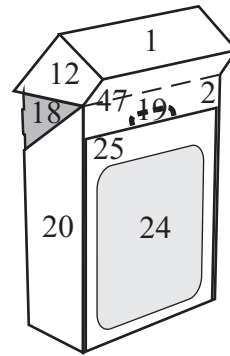


Fig. 4,18

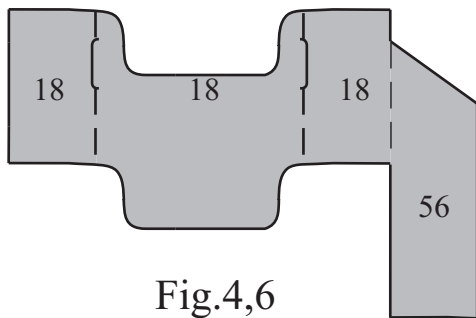


Fig. 4,6

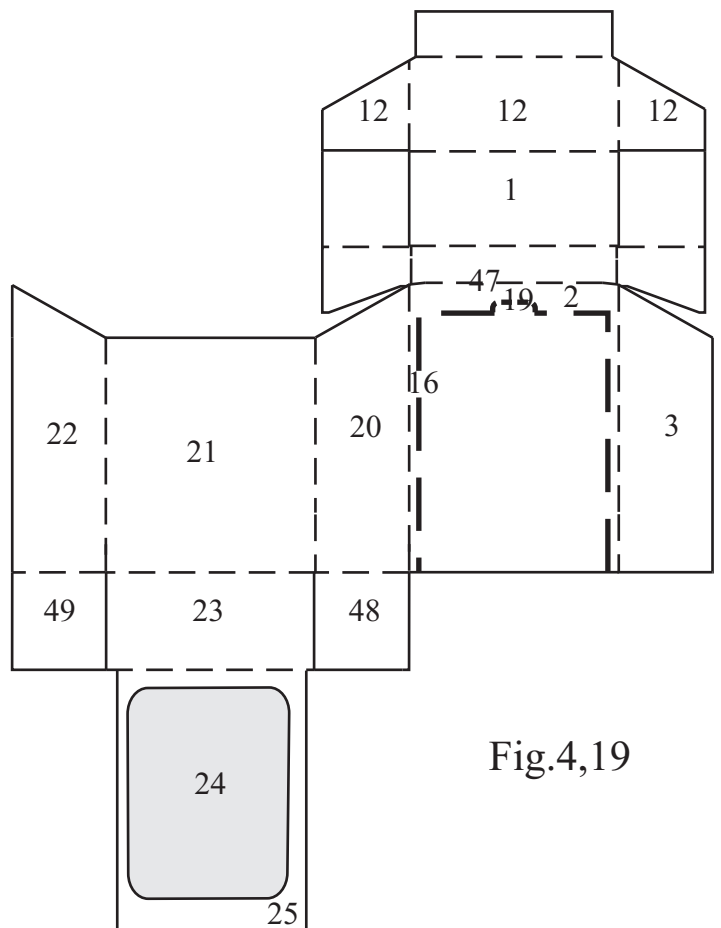


Fig. 4,19

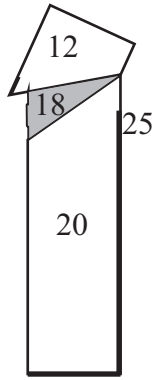


Fig.4,20

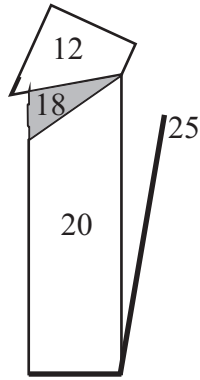


Fig.4,21

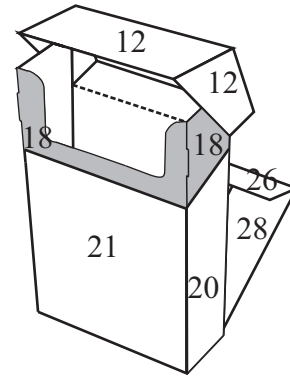


Fig.4,22

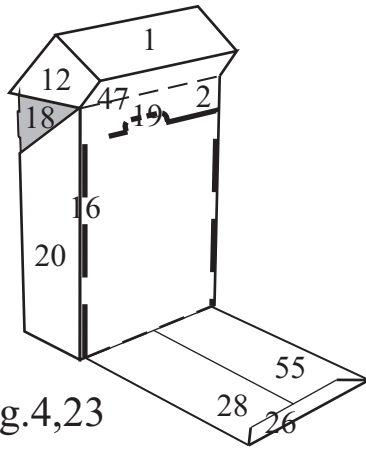


Fig.4,23

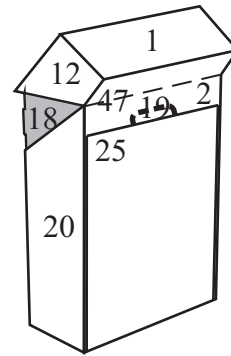


Fig.4,24

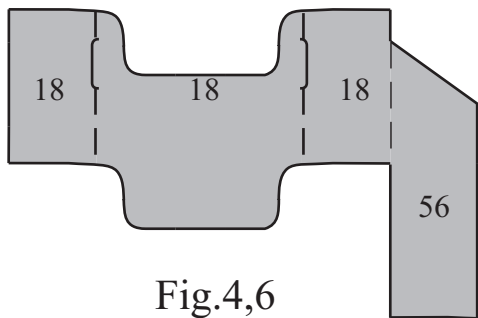


Fig.4,6

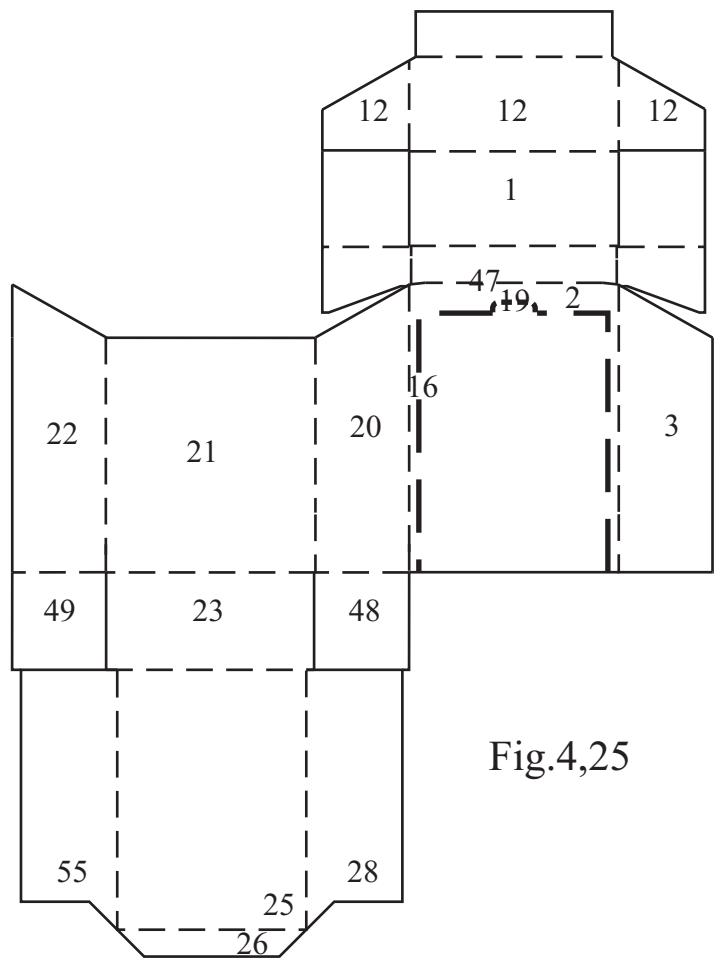


Fig.4,25

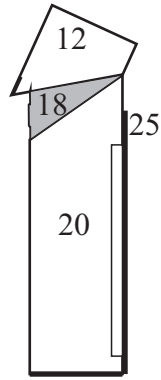


Fig. 4,26

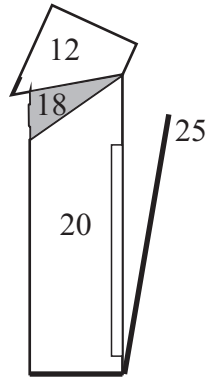


Fig. 4,27

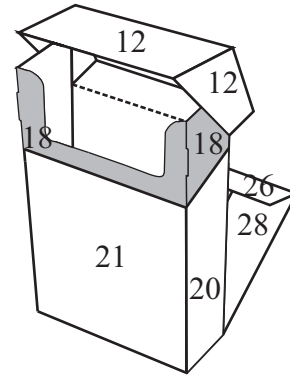


Fig. 4,28

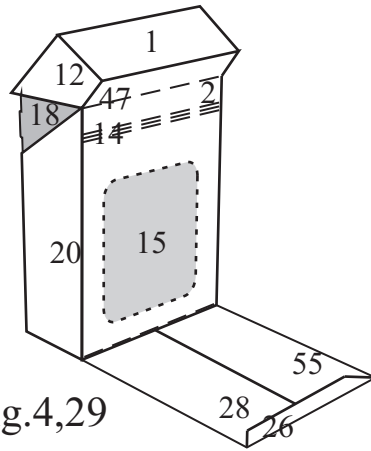


Fig. 4,29

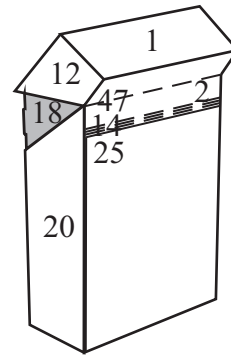


Fig. 4,30

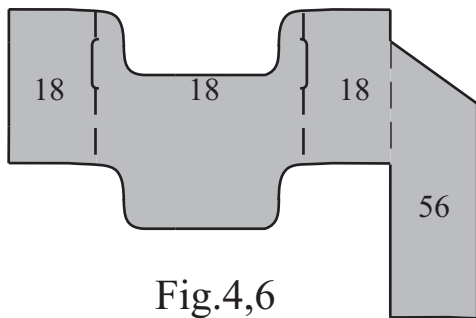


Fig. 4,6

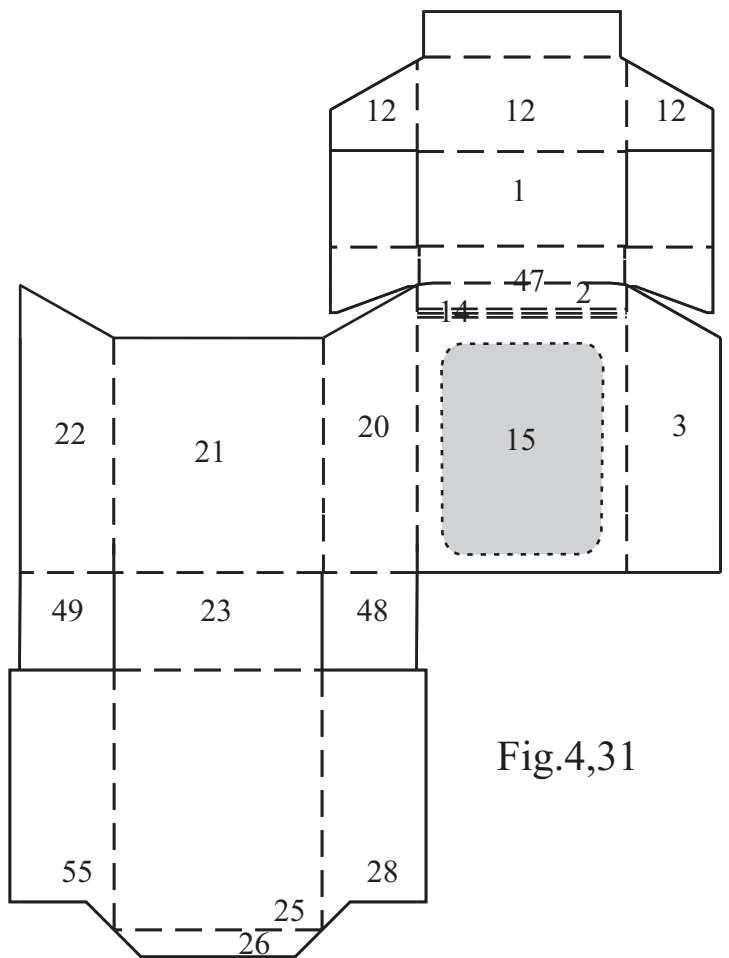


Fig. 4,31

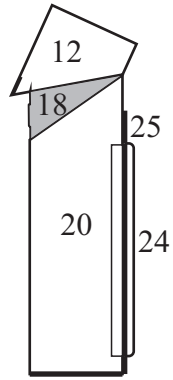


Fig. 4,32

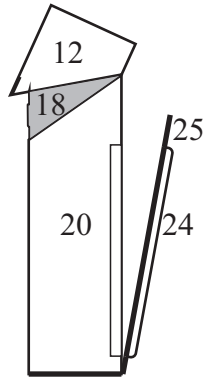


Fig. 4,33

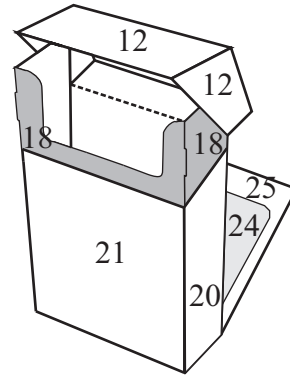


Fig. 4,34

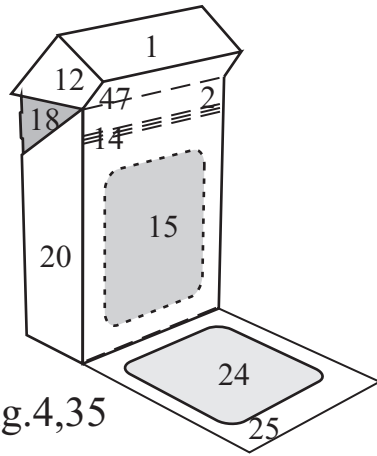


Fig. 4,35

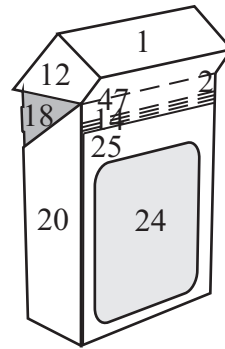


Fig. 4,36

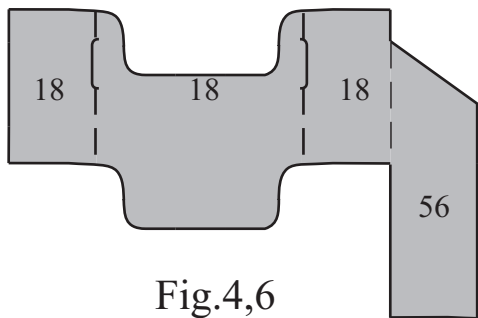


Fig. 4,6

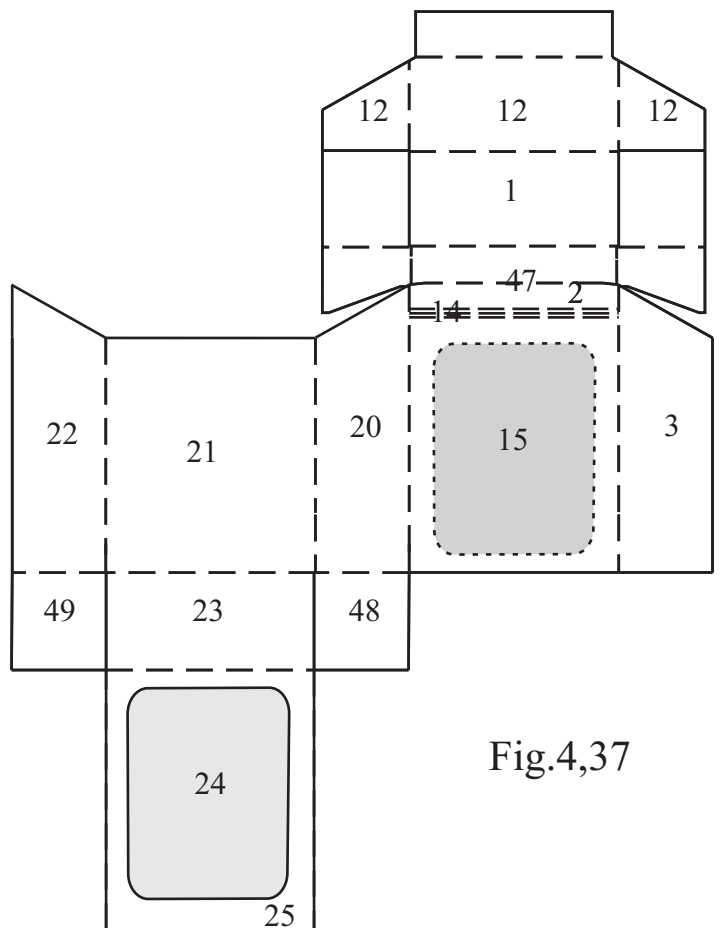


Fig. 4,37

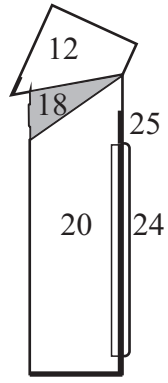


Fig.4,38

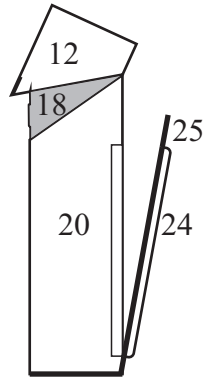


Fig.4,39

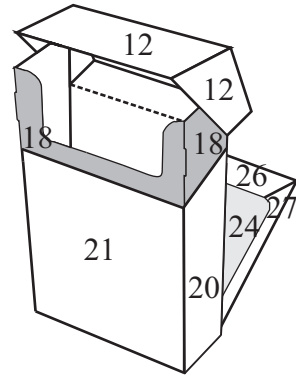


Fig.4,40

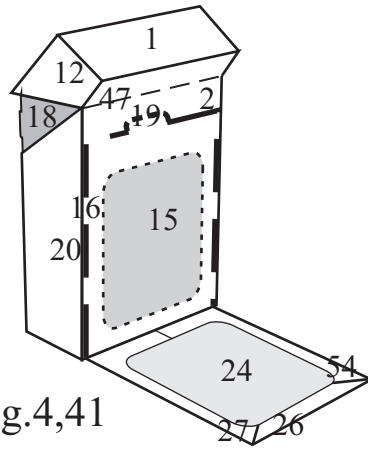


Fig.4,41

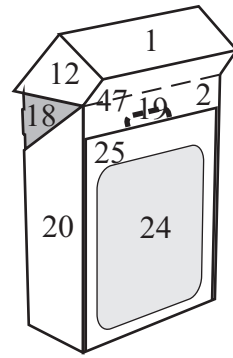


Fig.4,42

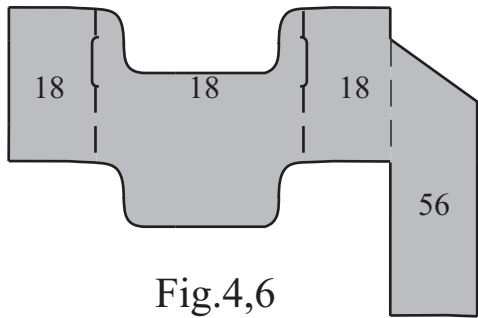


Fig.4,6

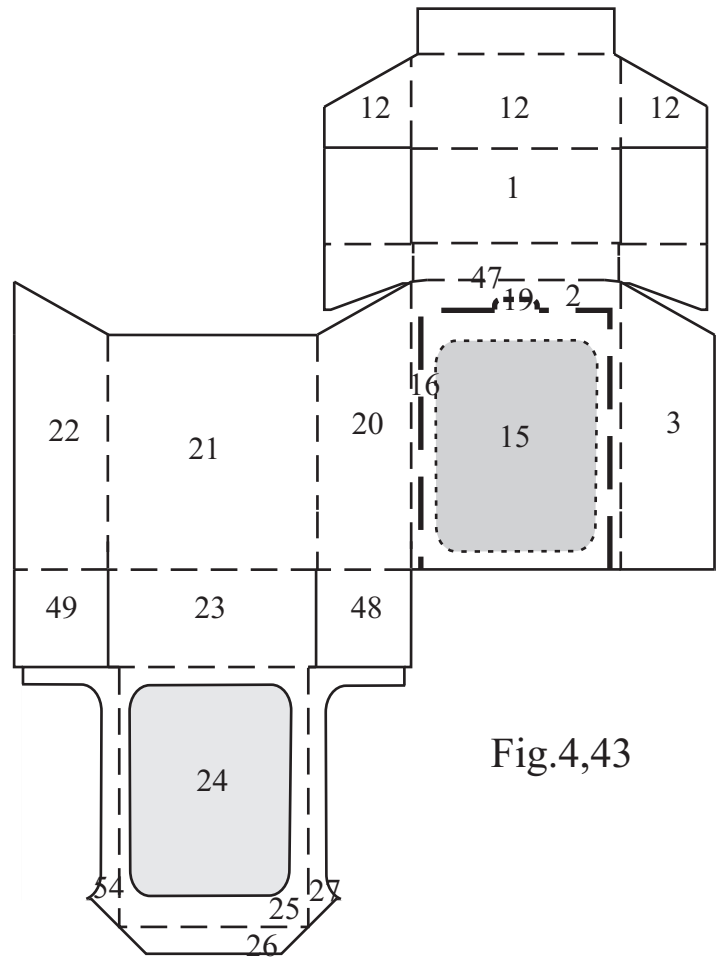


Fig.4,43

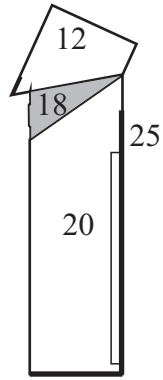


Fig. 4,44

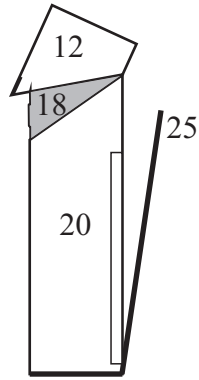


Fig. 4,45

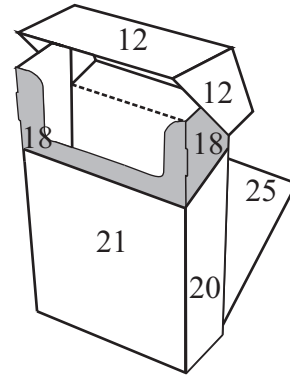


Fig. 4,46

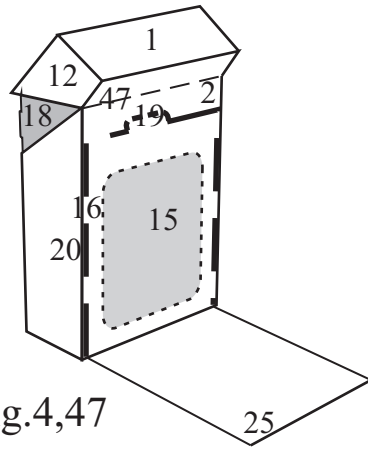


Fig. 4,47

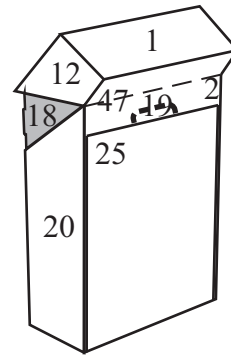


Fig. 4,48

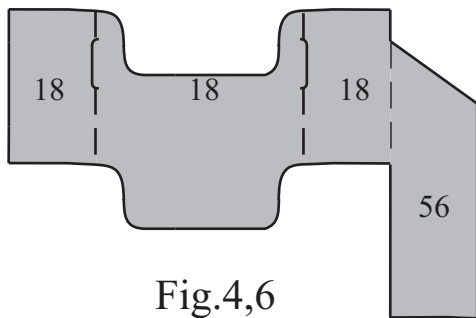


Fig. 4,6

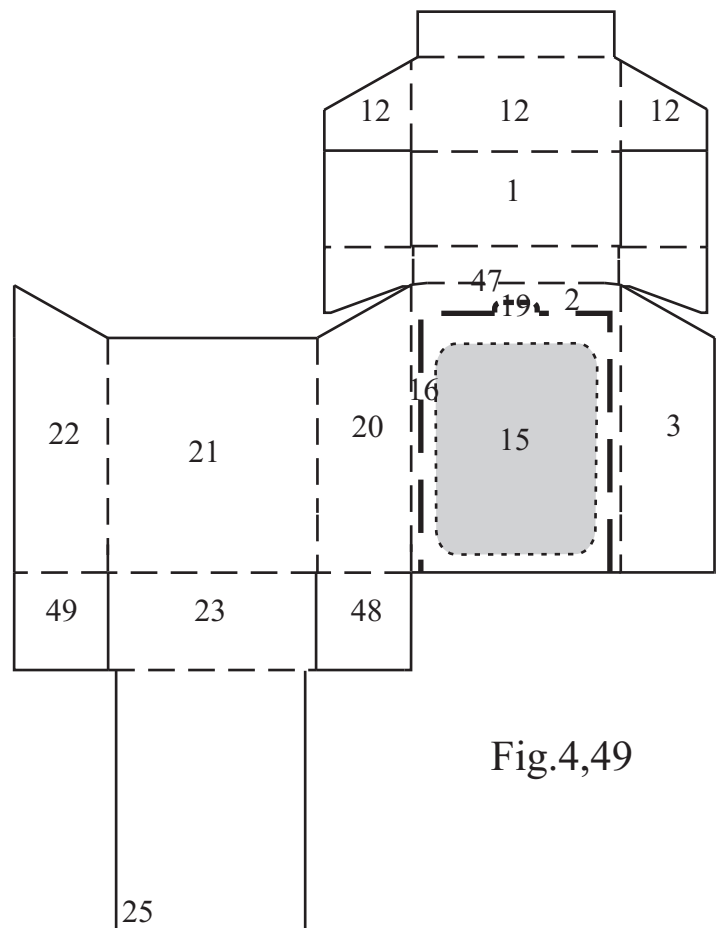


Fig. 4,49

Abstract

The present invention relates to a cigarette box and its blanks together with the configuration of their joints. The cigarette box according to the invention is based on a rectangular prism, and includes a storage space intended to store the cigarettes and a hinged lid (1) joined to the storage part by means of an articulated joint (47) placed on the rear wall (2). An additional storage space with an independent access, formed between the rear wall (2) or the inner front wall (30) or (46) with a flap (5) or (25) or (38) that is hinged independently from the upper hinged lid (1), is situated on the front or rear of the box.

The box is characterized in that, it consists of an outer blank and an inner blank of the box, wherein the configuration of the joints between these two blanks allows forming different variations of the box to obtain the additional storage space with the independent access even if the upper lid (1) is kept in its closed position.